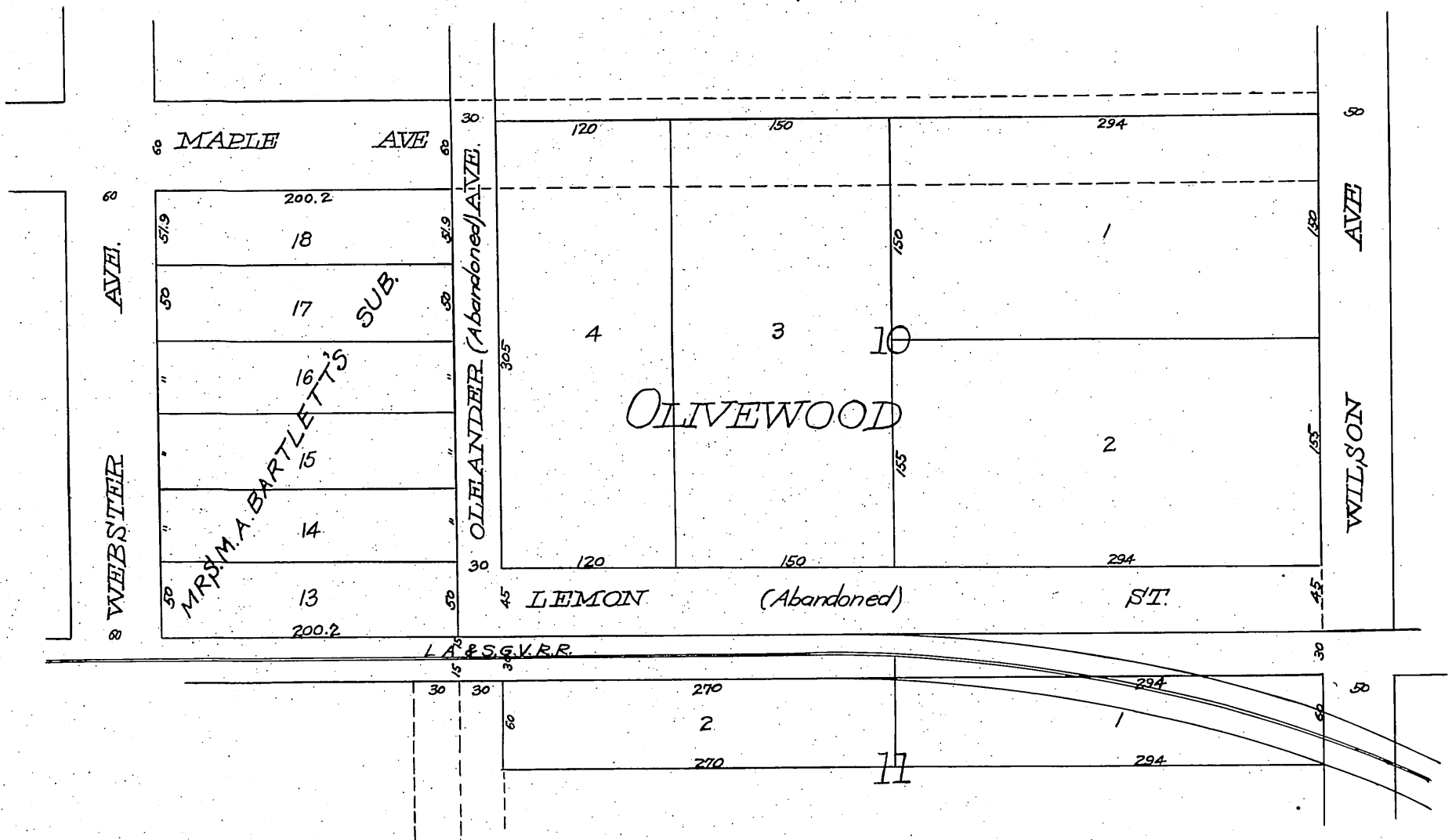


A 5  
174  
187



Office of the Board of Supervisors  
of Los Angeles County, California  
Monday, July 31, 1905.

In re Vacation of Portions of Lemon  
Street and Oleander Avenue, Sierra  
Madre Road District.

It is ordered that the following described portions of Lemon Street and Oleander Avenue, situate, lying and being in the Sierra Madre Road District, County of Los Angeles, State of California, to-wit; Lemon Street from the west line of Wilson Avenue west to the east line of Oleander Avenue; and the east thirty (30) feet of said Oleander Avenue from Lemon Street to the south line of Maple Street, all as shown in Block Ten (10) of Olivewood as per map recorded in Book 3, Page 17, Miscellaneous Records of said County, -- be and the same are hereby vacated and abandoned and the lands therein contained restored to acreage.

A full true and correct copy of the original  
Recorded at request of T. I. & T. Co. Aug 5 1905  
at 14 min. past 12 M.