

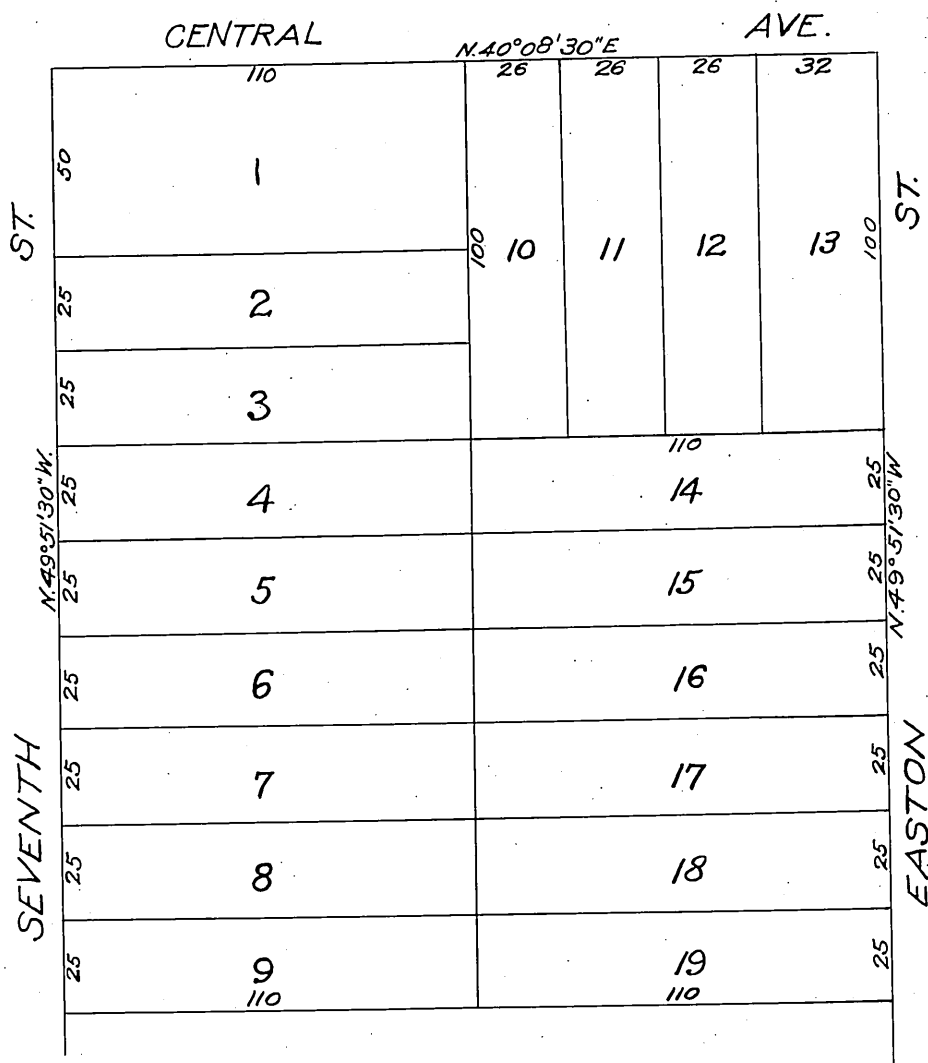
MAP
OF THE

George K. Frink Subdivision,

of the Western Portion of
Block No. 1, of the Coronel Tract.

Los Angeles City,
Los Angeles County, California.

Scale 30 ft. to inch.



A full, true and correct copy of the original.
Recorded at request of Geo. K. Frink Dec 7,
1905 at 23 min. past 12 M.

SH. O.K. A.O.K.