

→ PART OF →

San Marino Tr.

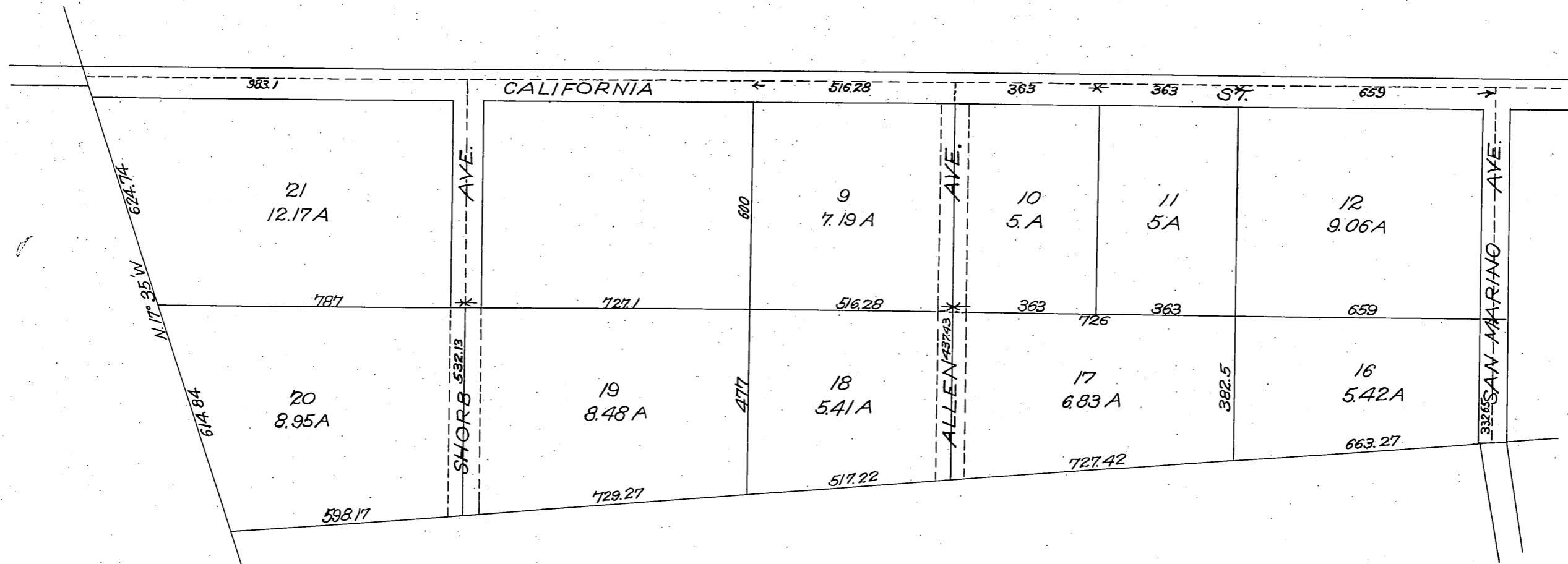
As per Map in Misc. Records 42-91 Showing portions of Allen Ave. and Shorb Ave. vacated by order of the Board of Supervisors made

April 4, 1905.

Scale 1"=300.

Part colored red shows part vacated.

For further vac. of Shorb Ave. (from Sierra Bonita Ave) See D:30-68 Ord.1849



1000