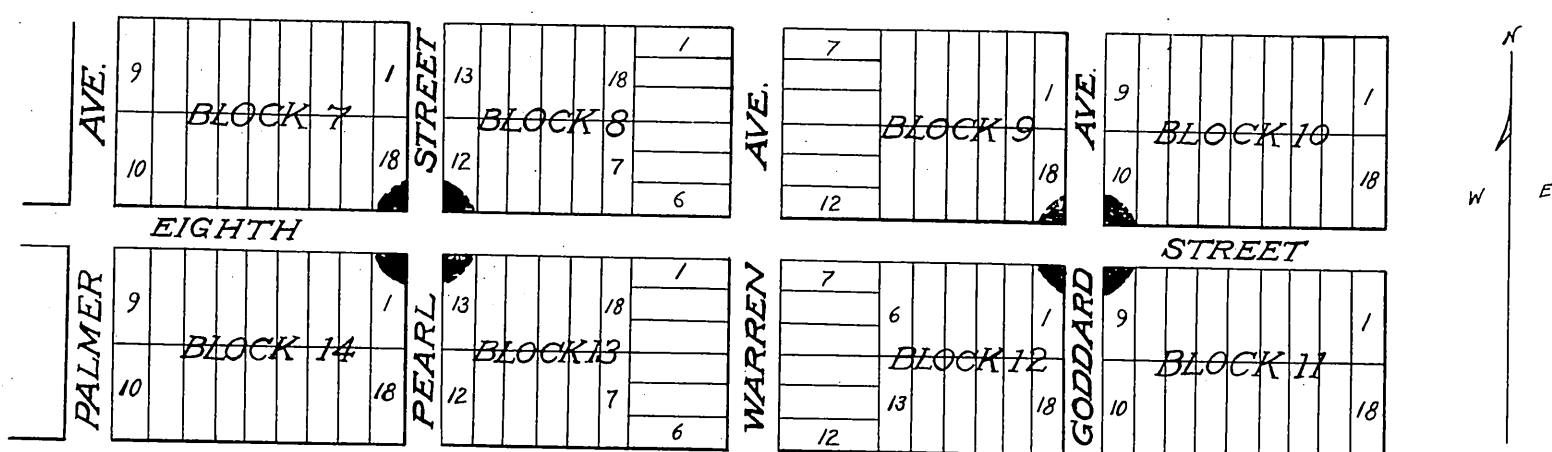


MAP

Showing all property affected by the vacation of portions of Pearl Street and other Streets in the Town of Claremont, San Jose Road District, County of Los Angeles, State of California, as ordered by the Board of Supervisors of said County, Tuesday November 7th 1905: 9:30 A.M. The portion declared vacated by said order are shown in red tint on this map.

⇒ Scale 300 feet = 1 inch ⇒



Office of the Board of Supervisors
of Los Angeles County, California.
Tuesday, November 7, 1905, 9:30 A.M.

In re Vacation of Portions of Pearl Street and other Streets in San Jose Road District.

It is ordered that the following described portions of those certain public highways situate, lying and being in the Town of Claremont, San Jose Road District, County of Los Angeles, State of California, to wit; That portion of Pearl (now Harvard) Avenue and Eighth Street bounded on the north and west by the circular boundary line of said streets, extending from the North line of Eighth Street to the West line of Pearl (now Harvard) Avenue; on the East by a Southerly prolongation of the West line of Pearl (now Harvard) Avenue; and on the South by an Easterly prolongation of the North line of Eighth Street, as per Map of the Town of Claremont, recorded in Book 15, Pages 87 and 88, Miscellaneous Records of Los Angeles County; Also, that portion of Pearl (now Harvard) Avenue and Eighth Street bounded on the North and East by the circular boundary line of said Streets, extending from the East line of Pearl (now Harvard) Avenue; to the North line of Eighth Street; on the South by a Westerly prolongation of the North line of Eighth Street; and on the West by a Southerly prolongation of the East line of Pearl (now Harvard) Avenue, as per said Map of Claremont;

Also, that portion of Pearl (now Harvard) Avenue and Eighth Street bounded on the North by a Westerly prolongation of the South line of Eighth Street; on the East and South by a circular boundary line of said Streets, extending from the South line of Eighth Street to the East line of Pearl (Now Harvard) Avenue; and on the West by a Northerly prolongation of the East line of Pearl (now Harvard) Avenue, as per said Map of Claremont. Also, that portion of Pearl (now Harvard) Avenue and Eighth Street bounded on the North by an Easterly prolongation of the South line of Eighth Street, on the East by a northerly prolongation of the West line of Pearl (Now Harvard) Avenue, and on the South and West by the Circular boundary line of said streets, extending from the West line of Pearl (now Harvard) Avenue to the South line of Eighth Street, as per said Map of Claremont; Also, that portion of Goddard Avenue and Eighth Street bounded on the north and West by the circular boundary line of said streets, extending from the North line of Eighth Street to the West line of Goddard Avenue, on the East by a Southerly prolongation

• 107 • 105

of the West line of Goddard Avenue and on the South by an easterly prolongation of the North line of Eighth Street as per said Map of Claremont;

Also, that portion of Goddard Avenue and Eighth Street bounded on the North and East by the circular boundary line of said streets extending from the East line of Goddard Avenue to the North line of Eighth Street; on the South by a Westerly prolongation of Eighth Street and on the West by a Southerly prolongation of Goddard Avenue, as per said Map of Claremont;

Also, that portion of Goddard Avenue and Eighth Street bounded on the North by a Westerly prolongation of the South line of Eighth Street; on the East and South by the Circular boundary line of said streets extending from the South line of Eighth Street to the East line of Goddard Avenue, and on the west by a northerly prolongation of the east line of Goddard Avenue, as per said Map of Claremont;

Also, that portion of Goddard Avenue and Eighth Street bounded on the north by an easterly prolongation of the South line of Eighth Street, on the East by a Northerly prolongation of the west line of Goddard Avenue; and on the South and West by the circular boundary line of said streets extending from the west line of Goddard Avenue to the south line of Eighth Street, as per Map of Claremont) (As will more fully appear by reference to map hereto attached and made a part hereof.) be and the same are hereby vacated and abandoned and the land therein contained restored to acreage.

Recorded at request of Geo. Jenks Dec. 20 1905
at 52 min. past 2. P.M.