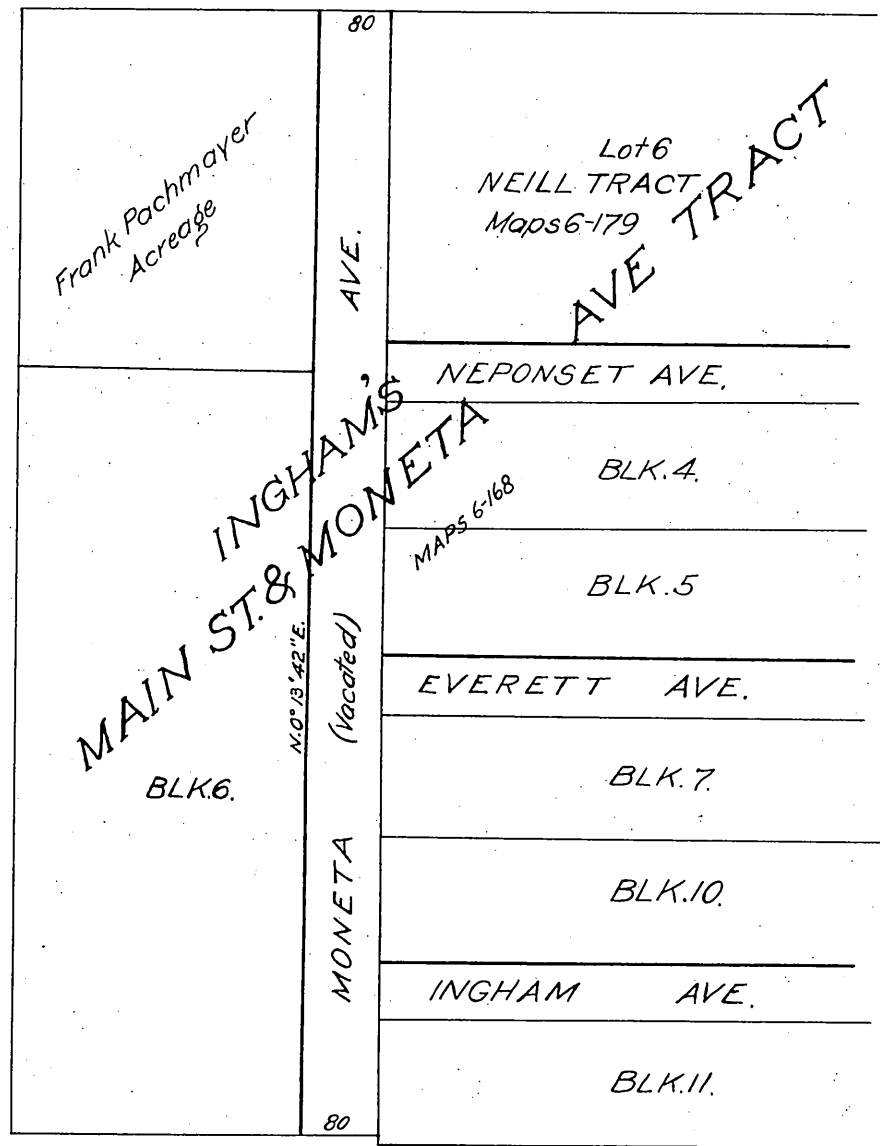


107+118

MAP

Showing portions of Inghams Main Stand Moneta Ave. Tract, Neill Tract and portion of Sec. 30. T. 2 S. R. 13. W. S. B.M. as affected by abandonment of portion of Moneta Ave. by order of Board of Supervisors of Los Angeles County Cal. made January 2, 1906
Scale 200'-1"



Office of the Board of Supervisors
of Los Angeles County, California,
Tuesday, January 2, 1906.

In re Vacation of a Portion of Moneta Avenue,
Green Meadows Road District. Petition of J. G.
Ingham et al.

It is ordered that the following described portion of Moneta Avenue, situate, lying and being in the Green Meadows Road District, County of Los Angeles, State of California to-wit: All that certain street shown on the Map of Ingham's Main Street and Moneta Avenue Tract, recorded in Book 6 of Maps, Records of Los Angeles County, California, at page 168 thereof, and all that certain street shown on the map of the Neill Tract, recorded in Book 6 of Maps: Records of Los Angeles County, California, at page 179 thereof, and designated on said Maps as Moneta Avenue, said street being bounded on the West by the East line of Block 6 of said Inghams Tract and the West line of said Neill Tract; on the East by a line coincident with the West line of Lot 6 of said Neill Tract and the West lines of Blocks 4-5-7-10 and 11 of said Ingham's Tract; on the North by the North line of the Neill Tract, and on the South by the South line of the Ingham Tract, -- be and the same is hereby vacated and abandoned and the land therein contained restored to acreage.

Recorded at request of J. G. Ingham Jan. 18, 1906
at 46 min. past 11 A.M.

Sht. O.K.
A. 87.

Handwritten initials/signature in the bottom right corner.