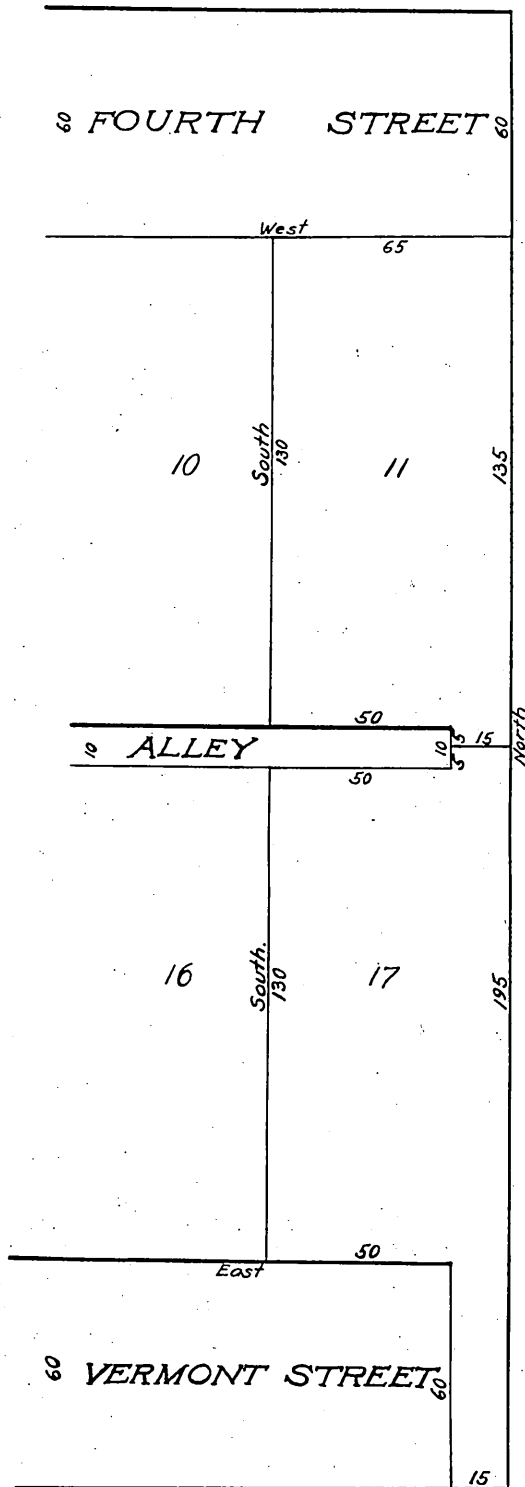


# MAP

OF A PORTION OF

## BASSETT'S TRACT

After the vacation of Alley and portion of Vermont St.



Office of the Board of Supervisors  
of Los Angeles County, California.  
Monday, January 29, 1906.

In re Vacation of a Portion of Vermont Street  
and a 15ft. Alley in Bassett's Tract, Long  
Beach Road District.

It is ordered that the following described Street and alley, situate, lying and being in the Long Beach Road District, County of Los Angeles, State of California, to-wit: "Being the East Alley on Bassett's Tract, and fifteen feet of Vermont Street adjoining same on the south," be and the same is hereby vacated and abandoned and the land therein contained restored to acreage.

Recorded at request of W.A. Foster. Feb. 21  
1906 at 55 min. past 2. P.M.

comp  
H.C.T.