

MAP
OF A PORTION OF

+107+123

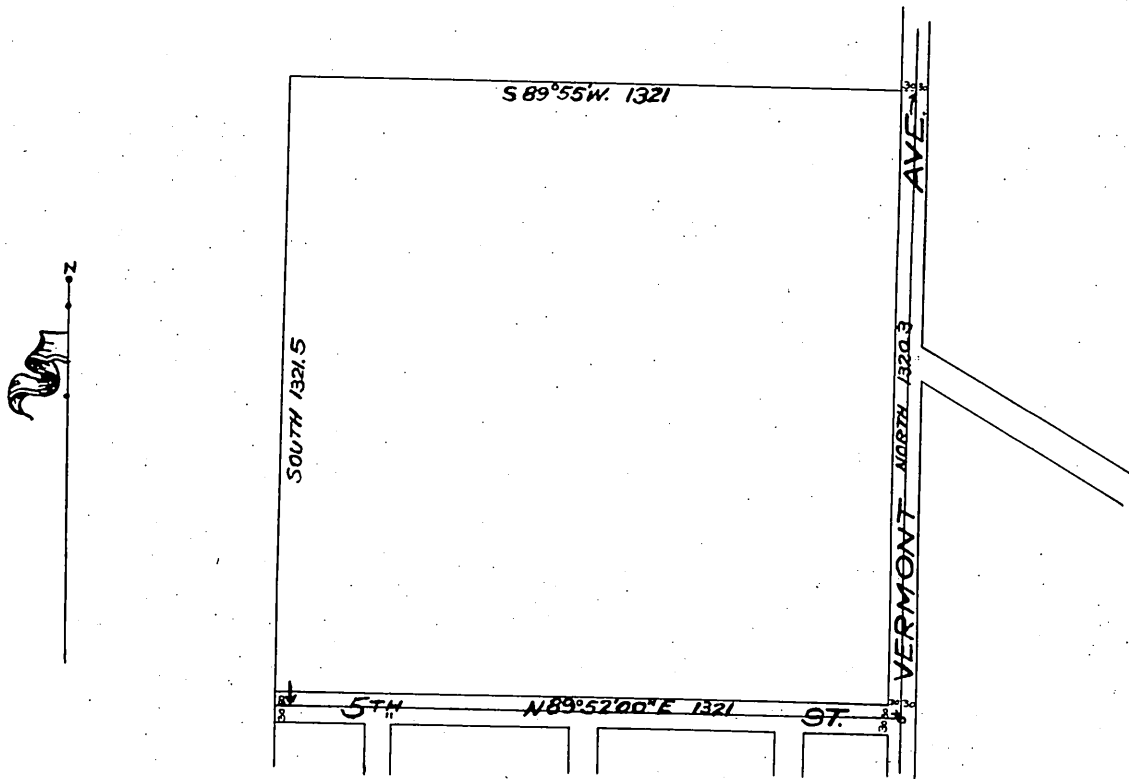
SCHMIDT ADDITION TO LOS ANGELES

(M.R. 22-53)

After vacation of certain streets as shown
by attached certified copy of the Board of
Supervisors of Los Angeles County, Cal.

March 1906.

Scale 200ft. = 1 inch.



Office of the Board of Supervisors.
of Los Angeles County, California.
Monday, March 5, 1906.

In revocation of St. Charles Street
and other streets in Cahuenga Valley
Road District

It is ordered that the following described public highways situate, lying and being
in the Cahuenga Valley Road District, County of Los Angeles, State of California, to-
wit: St. Charles Street, all of Fourth Street west of Vermont Ave., and all of Edward
Ave., Copenhagen Ave. and Frederick Ave. north of the north line of Fifth Street, as shown
on Map of Schmidt Addition to Los Angeles recorded in Misc. Rec, Book 22, Page 53,
be and the same are hereby vacated and abandoned and the lands therein contained res-
tored to acreage.

Recorded at request of O. S. Schmidt Mar. 7.
1906 at 16 min. past 4 P.M. (Scale reduced to
400' = 1")

A. 84
Sht O.K.