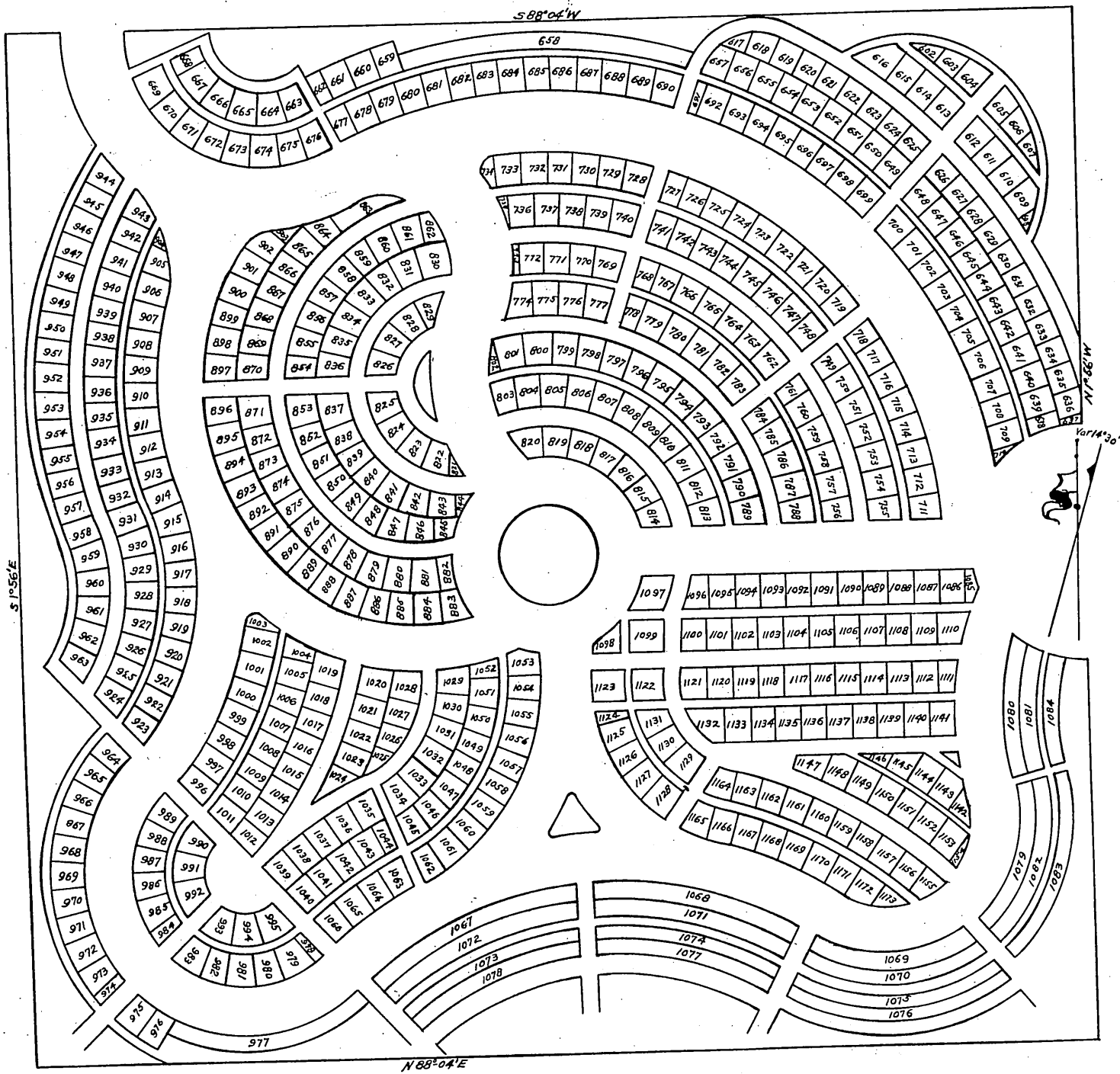


# PLAT OF AN ADDITION TO THE POMONA CEMETERY

107+136

—Being the—  
N.W. 1/4 of the S.E. 1/4 of Block C.  
of the  
PHILLIPS' ADD. TO POMONA  
Scale 1in=30ft.



Recorded at request of J.E.M. Comas Mar 23  
1906 at 30 min. past 3 P.M. (Scale reduced to 1/3)

For Franklin Ave See D: 5804-103 D: 14-63

A.O.K.  
Sht. O.K.

Comas  
H.C.