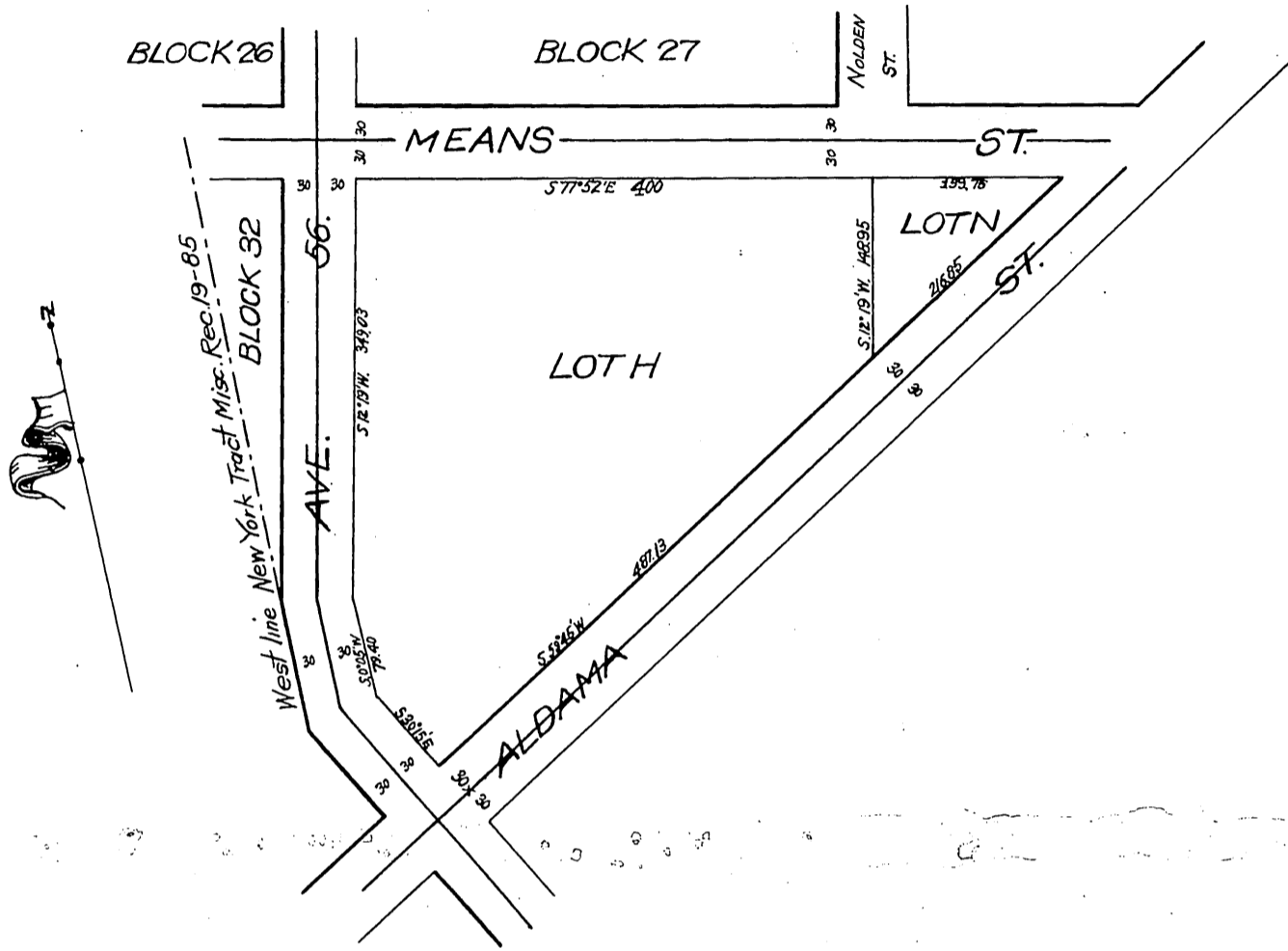


OFA CERTAIN PORTION OF THE

NEW YORK TRACT

After vacation of certain Streets and Alleys as shown
by attached certified copy of the order of the
Board of Supervisors

→ Scale 1" = 100' ←



Means St changed to Irvington Place D:13-6

*In revacation of Vine and other Streets
in New York Tract, Los Angeles Road District*

*It is ordered that the following described public highways
situate, lying and being in the New York Tract, Los Angeles Road District, County of Los
Angeles, State of California, to wit: Vine Street, between Avenue 56 and Aldama Street;
The Alley in Block 31; Nolden Street, from the South line of Means Street to Aldama
Street, - be and the same are hereby vacated and abandoned and the lands
therein contained restored to acreage.*

*Recorded at request of M.M. Hartney, Jun.
5, 1906, at 9 min. past 11 A.M. (Scale reduced
to 160' = 1")*

S. 8. A 79 1/2 B

*Comp
H.C.G.*