

107-159

Map of a portion of

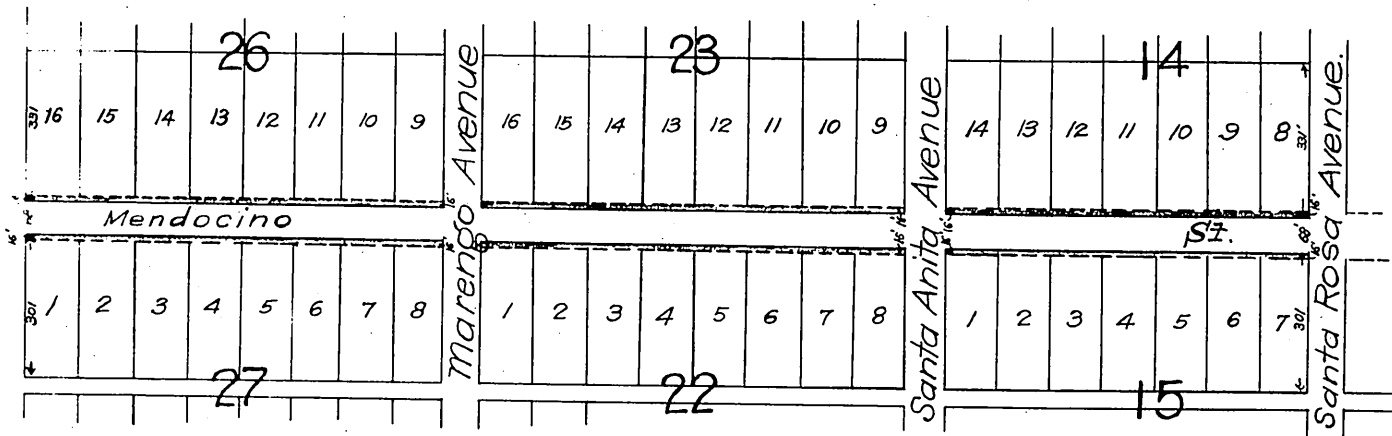
MAP 1

Altadena

After vacation of a portion of Mendocino Street as shown by attached order of the

Board of Supervisors

Scale 400ft = lin.



Deed W 25' of 16' strip South of Blk 26 D: 4006-252 D: 10-258
 " " 55' " 16 " North " " 27 D: 4067-307 D: 10-274
 " E. 30' " W 55' of 16' strip S. of Blk. 26 D: 10-194 D: 3745-65.

Office of the Board of Supervisors
 of Los Angeles County, California
 Tuesday, February 20, 1906.

In Revocation of a Portion of Mendocino }
 Street, Pasadena Road District }

It is ordered that the following described portions of Mendocino Street, situate, lying and being in the Pasadena Road District, County of Los Angeles, State of California, to-wit: "On Mendocino Street, a strip sixteen (16) feet wide on the South side of said street, commencing at the west line of Santa Rosa Avenue, at the intersection of said Mendocino Street and Santa Rosa Avenue, and running thence parallel to said South line of said street to the westerly end or terminus of said street; and a strip sixteen (16) feet wide on the north side of said Mendocino Street, commencing at the West line of Santa Rosa Avenue, running thence parallel with the north line of said street to the westerly end or terminus of said street;" be and the same are hereby vacated and abandoned and the land therein contained restored to acreage.

Recorded at request of Jacob Mansar Jun.
 15, 1906 at 59 min. past 1 P.M.

camp
1/29