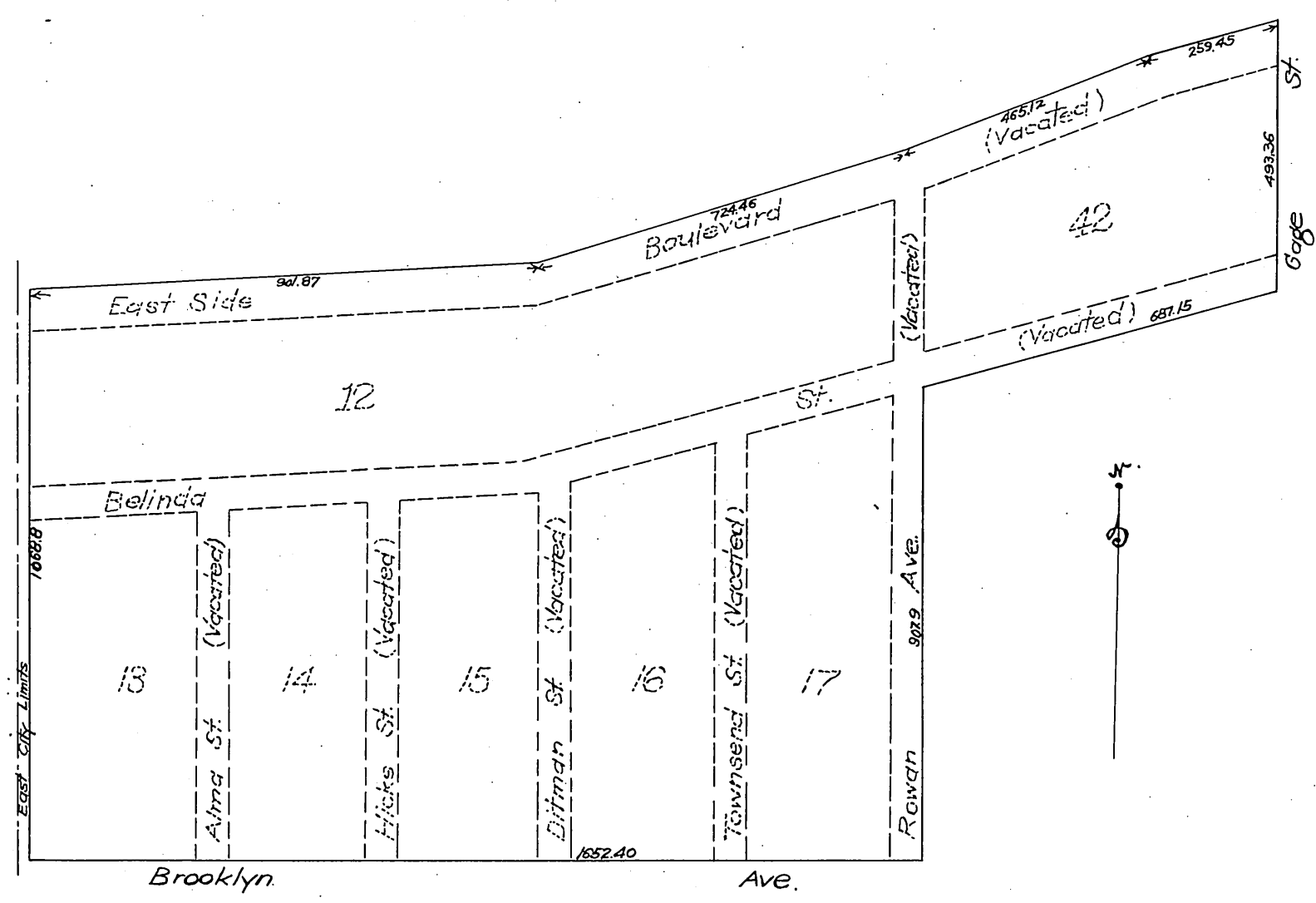


MAP 107154

Showing Streets Highways & Alleys in HT Hazards East Side Addition to the City of Los Angeles

Vacated by resolution of the Board of Supervisors of Los Angeles County as per minutes in Road Book #8 Page 324



Office of the Board of Supervisors
of Los Angeles County, California
Tuesday, February 6, 1906.

In Re Vacation of East Side Boulevard
and other Streets in Alhambra Road
District

It is ordered that the following described public highways situate lying and being in the Alhambra Road District, County of Los Angeles, State of California, to wit: "East side Boulevard from City limits to Gage Street; Belinda St. from City limits to Gage St.; Also an Alley lying between East side Boulevard and Belinda St. from City limits to Gage St.; Alma Street from Brooklyn Ave. to Belinda; Hicks Street from Brooklyn Ave. to Belinda; Ditman St. from Brooklyn Ave. to Belinda; Townsend St. from Brooklyn Ave. to Belinda; Rowan Ave. from Brooklyn Ave. to East Side Boulevard"; be and the same are hereby vacated and abandoned and the lands therein contained restored to acreage.

A. 67

Recorded Jun. 18, 1906 at 54 min. past 11 A.M.
at request of Jaus Co. (Scale reduced to 300'
to 1")

sht O.K.