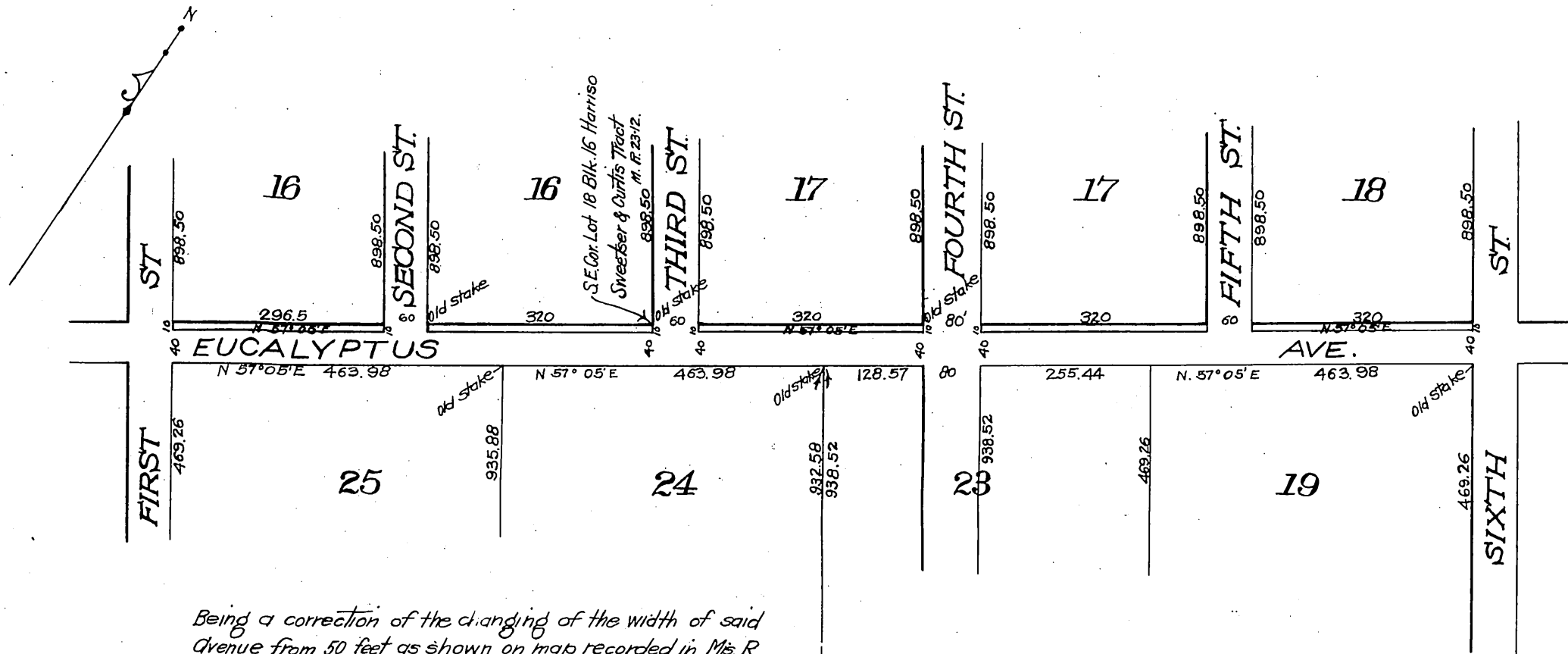


MAP 107-167

of Vacation of a portion of the recorded width of Eucalyptus Avenue of the Palms Mis. R21-45

Scale 1" = 200'



Being a correction of the changing of the width of said Avenue from 50 feet as shown on map recorded in Mis. R. 21-45 to 40 feet as shown on ground.

H. J. Stocker, Engineer

Office of the Board of Supervisors
of Los Angeles County, California
Monday, June 25, 1906.

In Re Vacation of a Portion of }
the "Recorded Width of Eucalyptus }
Avenue, in Ballona Road District

It is ordered that said petition be granted and that so much of Eucalyptus Avenue, situate in the Ballona Road District, County of Los Angeles, State of California, as may be necessary to correct the recorded width of said Eucalyptus Avenue to conform with width on the ground as established by stakes and holdings, be and the same is hereby vacated and abandoned and the land therein contained restored to acreage.

Eucalyptus Ave. changed to Hinshaw St. Ord. 95838

Recorded at request of H. J. Stocker Jul. 2,
1906 at 47 min. past 1 P.M. —

*Comptroller
H. C. ...*