

TOP 176-177

Hermosa Terrace Tract No 2

Being a Subdivision of Block 69
First Addition to Hermosa Beach

—MBI-59—

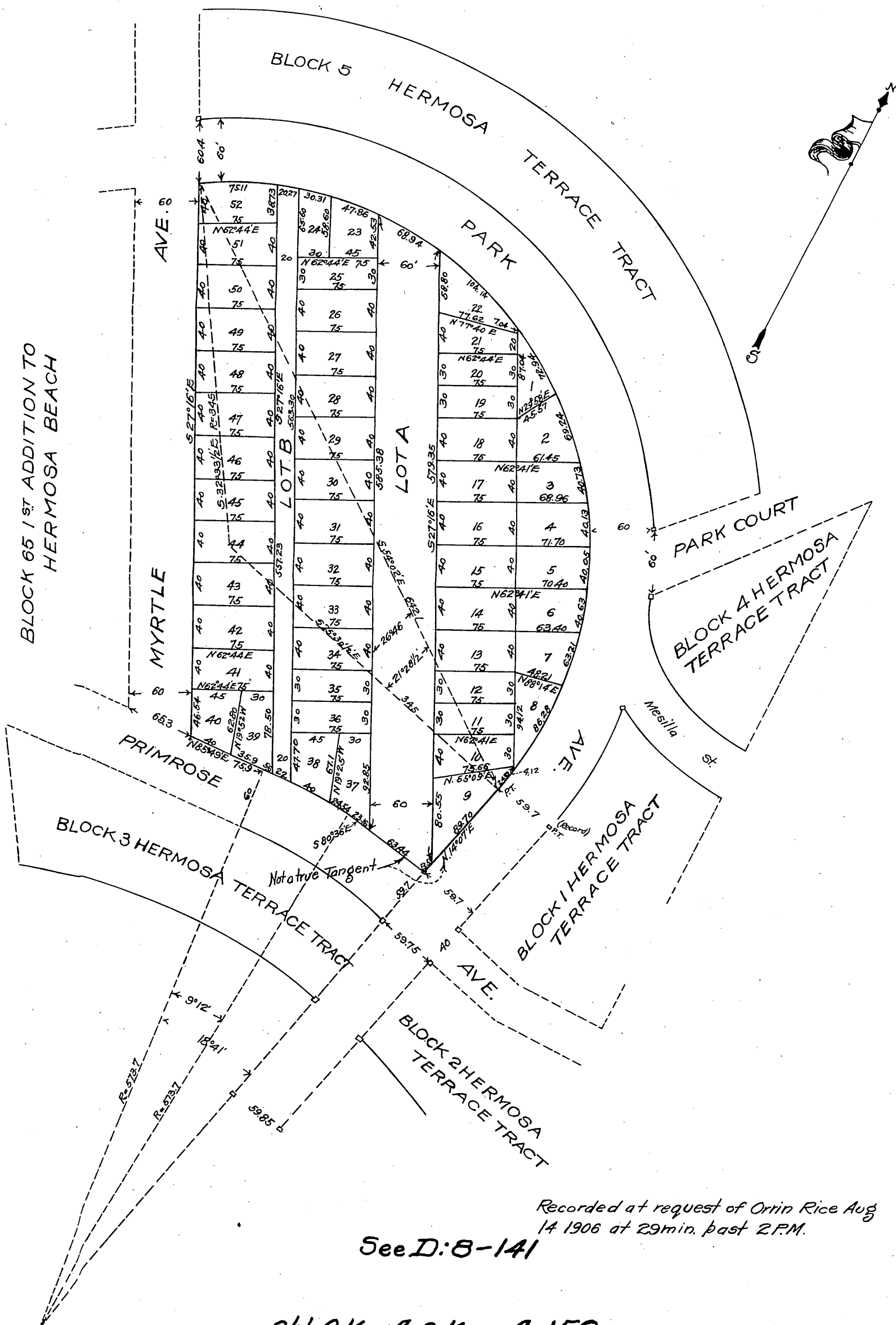
Surveyed in July 1906

By C. C. McCarty L.S. & C.E.

—Scale 100' = 1 Inch—

Note: The sign "a" occurring frequently on this map represents a stake found by me at the place indicated having been set in connection with the survey of First Addition to Hermosa Beach or of Hermosa Terrace Tract.

G. C. M. & C.



Recorded at request of Orrin Rice Aug 14 1906 at 29 min. past 2 P.M.

See D: 8-141

Sh: O.K. A.O.K. A: 159

comp 10-