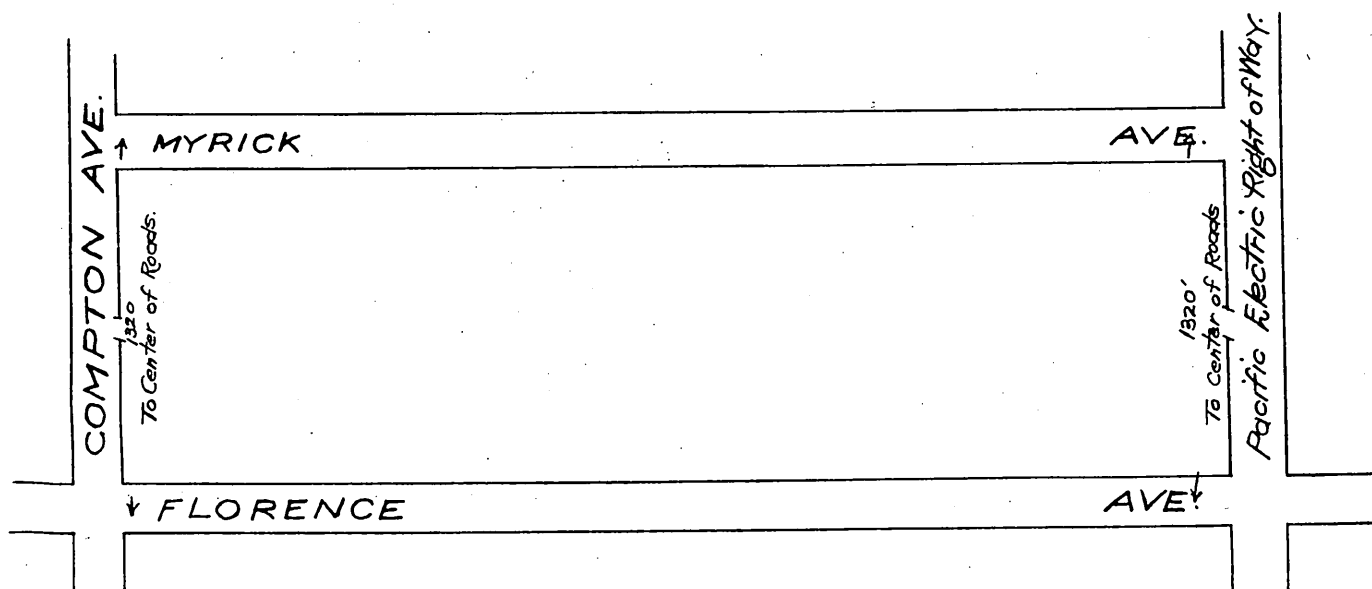


107+104

S W 1/4 OF S. E 1/4
 SECTION 21, T. 2. S., R. 13 W., S. B. M.
 LOS ANGELES COUNTY
 CALIFORNIA



Office of the Board of Supervisors
 of Los Angeles County, California
 Monday, August 27, 1906.

In Re Vacation of Myrick Avenue }
 Florence Road District }

It is ordered that the following described public highway, situate, lying and being in the Florence Road District, County of Los Angeles, State of California, to-wit: That certain street known as and called "Myrick Avenue," extending west from the right-of-way of the Pacific Electric Railway to the public highway known as "Compton Avenue," and forming with-said public highway the northern and western boundaries of the S. W. 1/4 of the S. E. 1/4 of Sec. 21, T. 2. S., R. 13. W., S. B. M. - be and the same is hereby vacated and abandoned and the land therein contained restored to acreage.

Recorded at request of E. Overton Aug. 31, 1906
 At 32 min. past 11 A. M.

compt.
H. C. H.