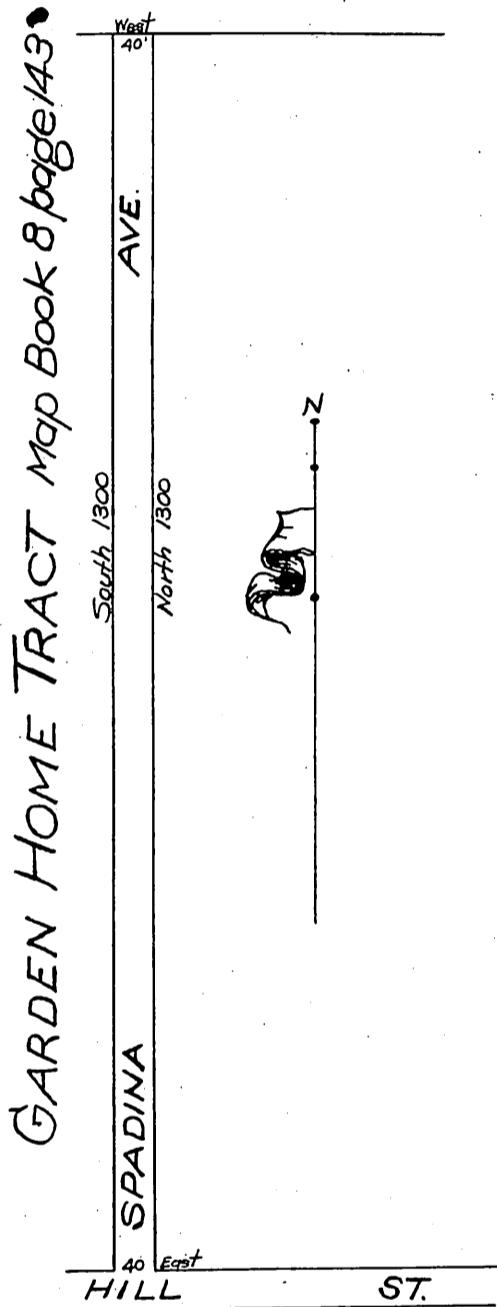


PLAT 107.01
 To accompany Petition
 To Vacate Spadina Avenue
 The East line of which is the East
 line of Lot 20 of
 the Wilmington Colony Tract
 - Scale 80' = 1" -



Office of the Board of Supervisors
 of Los Angeles County, California
 Tuesday, September 11, 1906.

In Re Vacation of Spadina Avenue }
 Long Beach Road District }

It is ordered that the following des-
 cribed public highway, situate, lying and being in the Long Beach Road District,
 County of Los Angeles, State of California, to-wit: Spadina Avenue, said -
 Avenue being 40 feet in width, as shown upon map of the Garden Home -
 Tract, recorded in Book 8, page 143, in the office of the County Recorder of
 said County of Los Angeles, be and the same is hereby vacated and abandon-
 ed and the land therein contained restored to acreage.

Recorded at request of C.T. Healey Sep. 22,
 1906 at 20 Min. past 1 P.M. (Scale reduced to
 200' = 1")

A132
 Sht. O.K.

Comp.
 H.C.G.