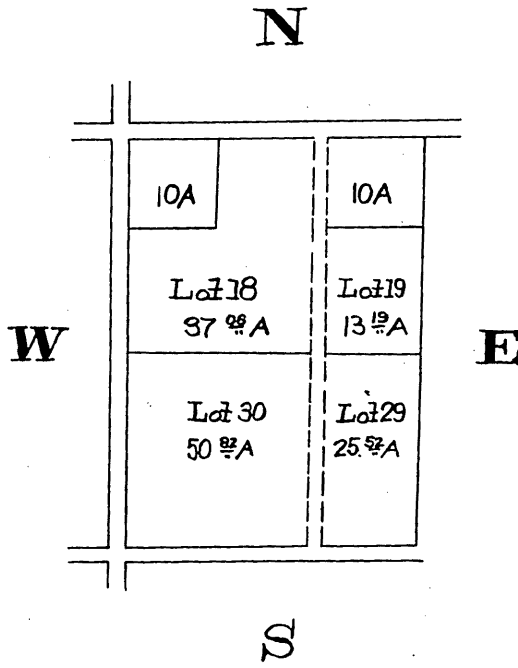


MAP 107-195

part W portion of
TEJUNGA RANCH

As per map recorded in Book 29 pages
51 & 52 Misc Records

N. - Road vacated dotted with Red.



Office of the Board of Supervisors
of Los Angeles County, California
October 2, 1906.

In Re Vacating of a Road in
Crescenta Road District

It is ordered that the following described public highway situate in the Crescenta Road District, County of Los Angeles, State of California, to-wit: That certain road which lies on the East side of Lots 18 and 30, as the same is shown on the map of the west portion of Tejunga Ranch recorded in Book 29, pages 51 and 52 of the Miscellaneous Records of Los Angeles County - be and the same is hereby vacated and abandoned and the land therein contained restored to acreage.

Recorded at request of W. H. Warfield
Oct. 5, 1906, at 25 min. past 11 A. M.

Sh 8 A127

com