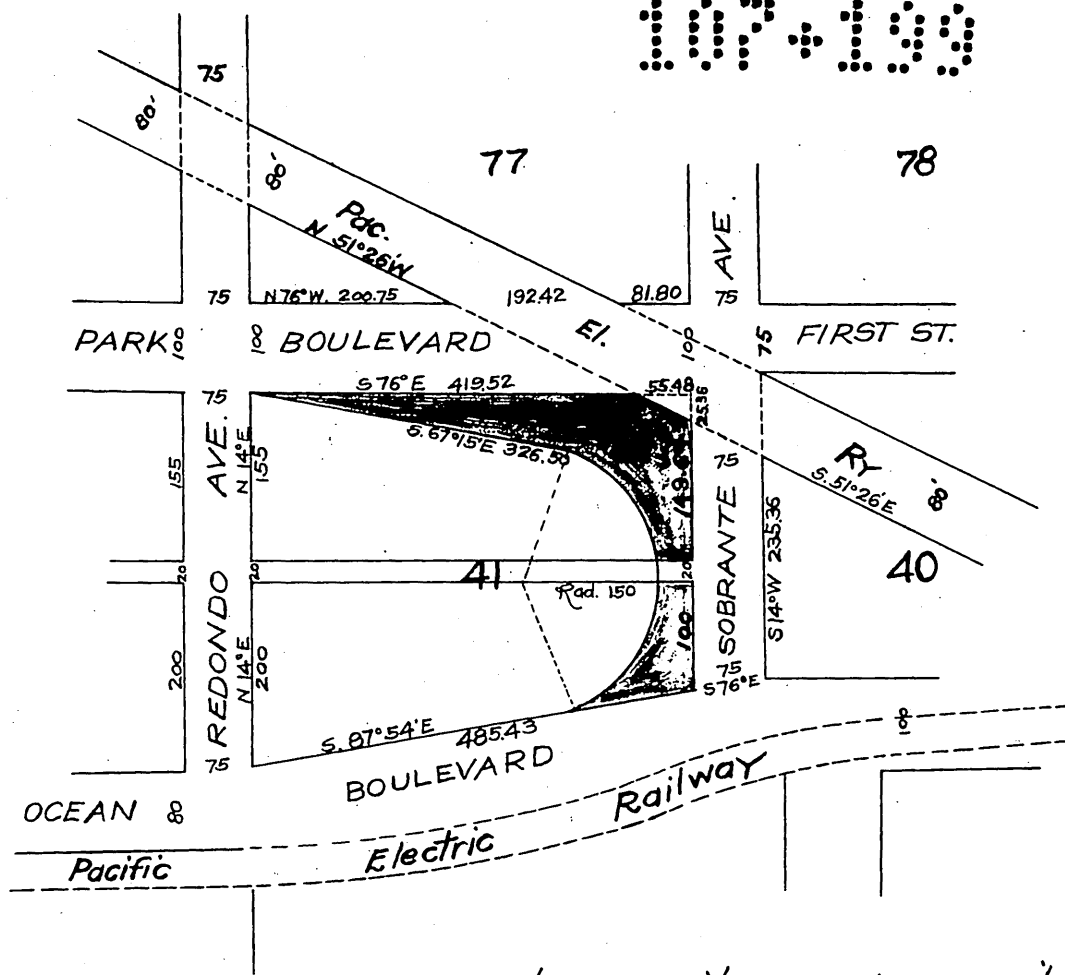


107-199



Plat of Part of Alamos Beach Townsite.

Office of the Board of Supervisors
of Los Angeles County, California
Monday, October 8, 1906.

In Re-Vacation of Parts of }
Park Boulevard and Sobranite }
Avenue, in Long Beach Road }
District.

It is ordered that the following described portions of Park Boulevard and Sobranite Avenue, ^{sites} lying and being in the Long Beach Road District, County of Los Angeles, State of California, to-wit: The land bounded on the north by the south line of Park Boulevard, assuming said Boulevard to be 100 ft. wide (measuring from the South line of Block 77) and by the south western line of a small Triangle of land included in the right-of-way of the Pacific Electric Railway, and on the east by the west line of Sobranite Ave. assuming the same avenue to be 75 ft. wide (measuring from the west line of Block 40), and on the south, in part, by the north line of Ocean Boulevard, as located by a straight line running from a point which bears N. 76° W. 75 ft. from the south west corner of said Block 40 N. 87° 54' W. 485.43 ft. to the south west corner of said Block 41 -- the land sought to be vacated being that irregular strip lying between said described lines and the northern, eastern and southern lines of said Block 41 (Reference being made to the plat of Alamos Beach Townsite recorded in Map Book 5, page 55 Records of Los Angeles County -- be and the same are hereby vacated and abandoned and the lands therein contained restored to acreage.

Recorded at request of C.T. Healey Oct.
17, 1906 at 24 min. past 2 P.M.

A 135 Sht. O.K.

Comp. H.C.