

PLAT

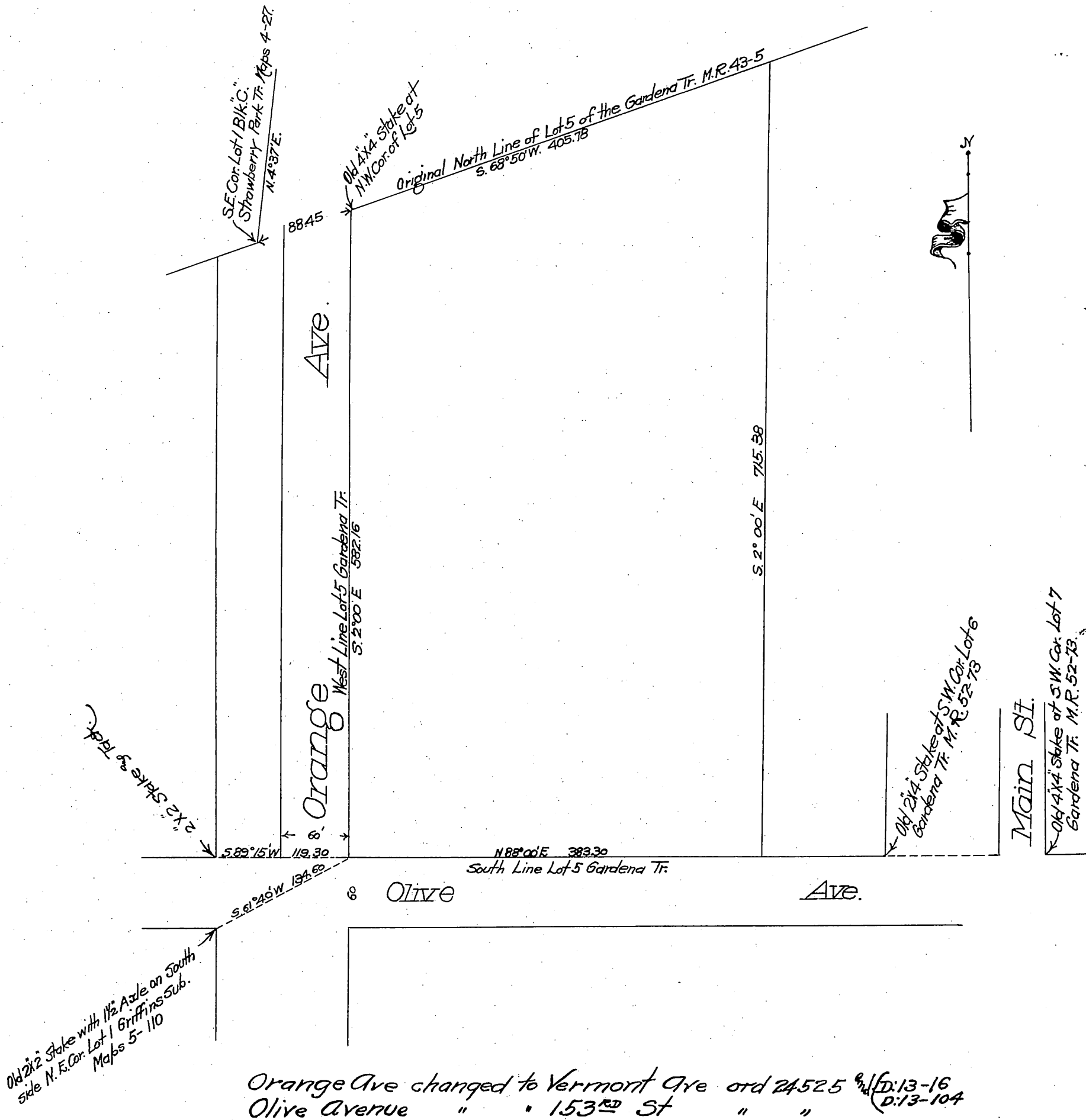
→ SHOWING ←

Strawberry Park Rissman Tr.

Restored to acreage by
Board of Supervisors Tuesday

October 16th 1906

Scale 1 inch 100 feet.



St. 9 A 89^a

Comp. E.M.C.

Office of the Board of Supervisors
of Los Angeles County, California,
Tuesday, October 16, 1906.

In Revocation of Ramona Avenue }
Gardena Road District. }

It is ordered that
the following described public highway, situate, lying and being in the Gardena Road District County
of Los Angeles, State of California, to-wit:
That certain road or street known as Ramona Avenue, the same being 60 ft. in width by 383.30
feet in length, said Ramona Avenue being located in the center of that certain tract known as
Strawberry Park Rissman Tract, as per map recorded in Book 8, Page 89 of Maps in the office
of the County Recorder of Los Angeles County, be and the same is hereby vacated and abandoned
and the land therein contained restored to acreage.

Recorded at request of T.I. & T.C. Oct. 26.
1906 at 36 min past 11 A.M.