

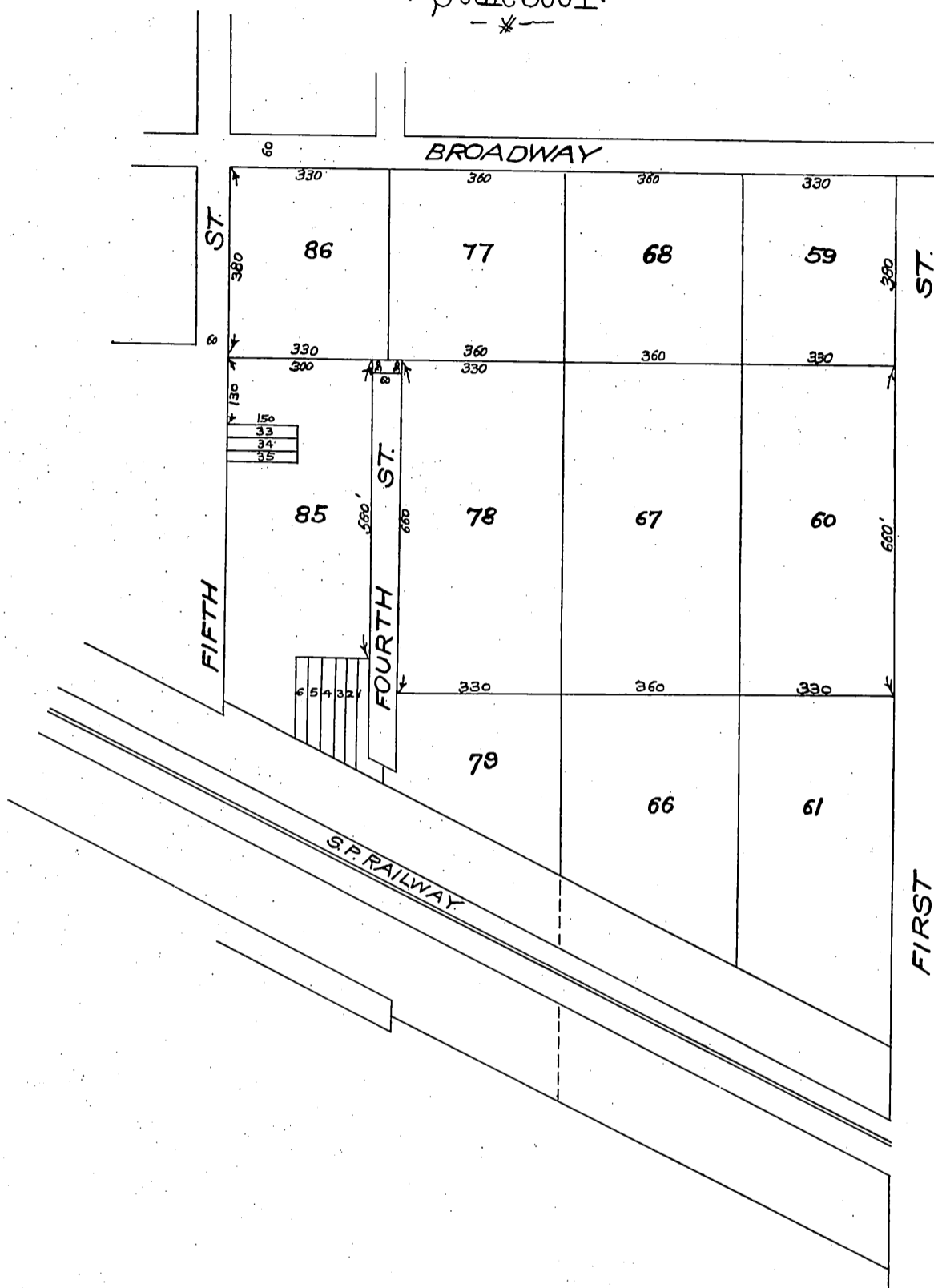
MAP

Showing vacation of a Portion of

MYRTLE AVE.

In San Gabriel Road District
as per attached order of Board of
Supervisors L.A. Co., Cal.

→ Scale 300' ←
—*—



In Re Vacation of Myrtle Avenue }
San Gabriel Road District }

Office of the Board of Supervisors,
of Los Angeles County, California,
Tuesday, August 7, 1906.

It is ordered that the following described public highway, to-wit: —
Myrtle Avenue from the West line of First Street to the East line of Fifth Street all
as shown on the map of the "Town of East San Gabriel" recorded in Book 21, at pages
79 to 84 of the Miscellaneous Records of Los Angeles County, be and the same is here-
by vacated and abandoned and the land therein contained restored to acreage.

Recorded at request of S. W. Champion Dec.
31, 1906 at 4.4 m in. past 4:41 P.M.

*copy
H.C.P.*