

MAP

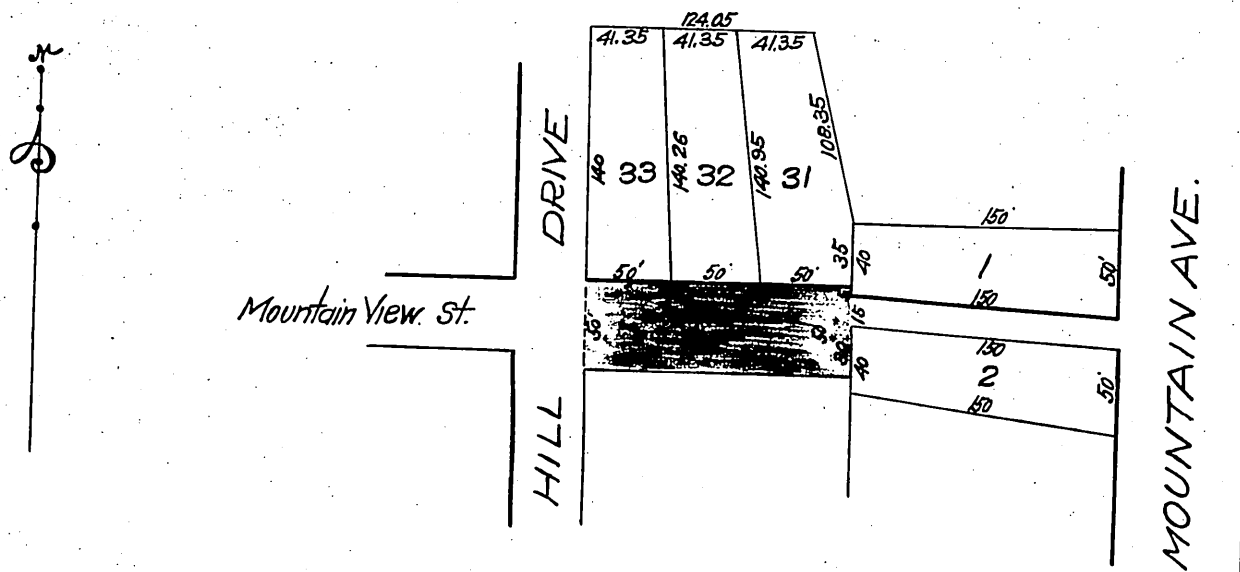
107 070

210
877
1211
879

OF A PORTION OF THE

SAN RAFAEL TERRACE TRACT

After vacation of Mountain View St. as shown by attached certified copy of the Order of the Board of Supervisors



In Re Vacation of a Portion of Mountain View Street, Los Angeles Road District.

Office of the Board of Supervisors.
of Los Angeles County, California.
Tuesday, February 19, 1907.

It is ordered that said petition be and the same is hereby granted, and that the following described portion of Mountain View Street, situate, lying and being in the Los Angeles Road District, County of Los Angeles, State of California, to wit; - That part of Mountain View Street lying east of Hill Drive in the San Rafael Terrace Tract recorded in Book 9, Page 103 of Maps, in the Office of the County Recorder of Los Angeles County, be and the same is hereby vacated and abandoned and the land therein contained restored to acreage.

Recorded at request of R. Singer
June 4, 1907, at 39 min. past 12 M.

A. 79 Sht OK.

comp