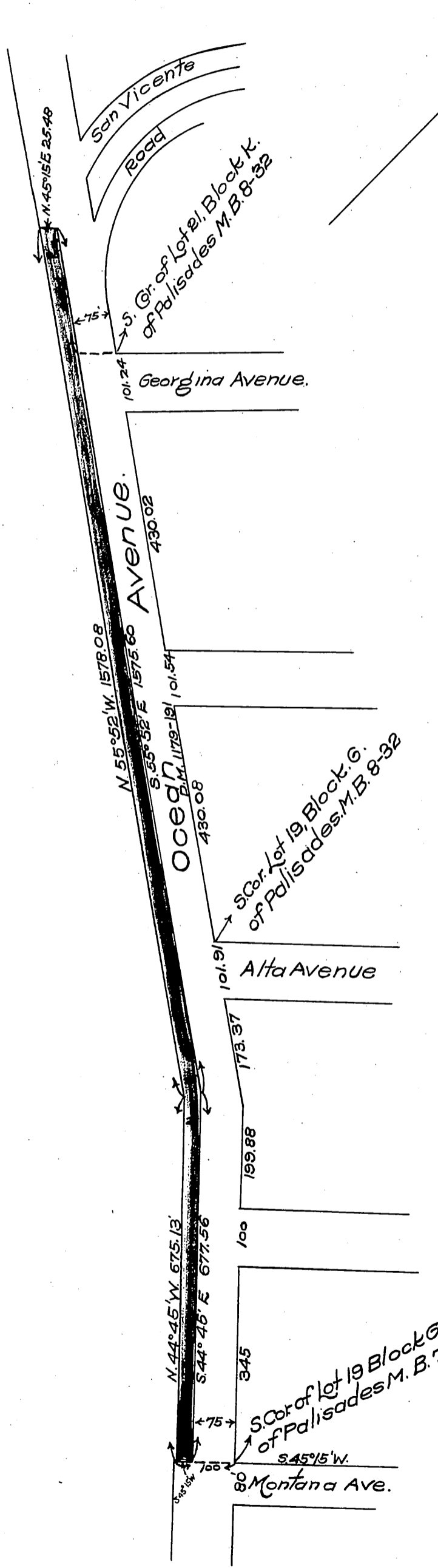


PLAT

11709

Showing the westerly 25 feet of Ocean Ave. from San Vicente Road to Montana Ave. as ordered vacated by Resolution of Board of Supervisors as shown in Road Book 8 pg. 241
Scale 1"=200'

25
511
28
A-96



In Relocation of a Portion of Ocean Avenue, Santa Monica Road District.

Office of the Board of Supervisors of Los Angeles County, California November 27, 1905

It is ordered that the following described portion of Ocean Avenue, situate, lying and being in the Santa Monica Road District, County of Los Angeles, State of California, to wit: "The westerly twenty-five (25) feet of Ocean Avenue, from the San Vicente Road to Montana Avenue" be and the same is hereby vacated and abandoned and the land therein contained restored to acreage.

Recorded at request of A. I. Smith May 18, 1908.