

# MAP

showing additions to western halves of  
Blocks 32, 35, & 39, ORDS SURVEY  
and renumbering of the same  
Plotted July 1876

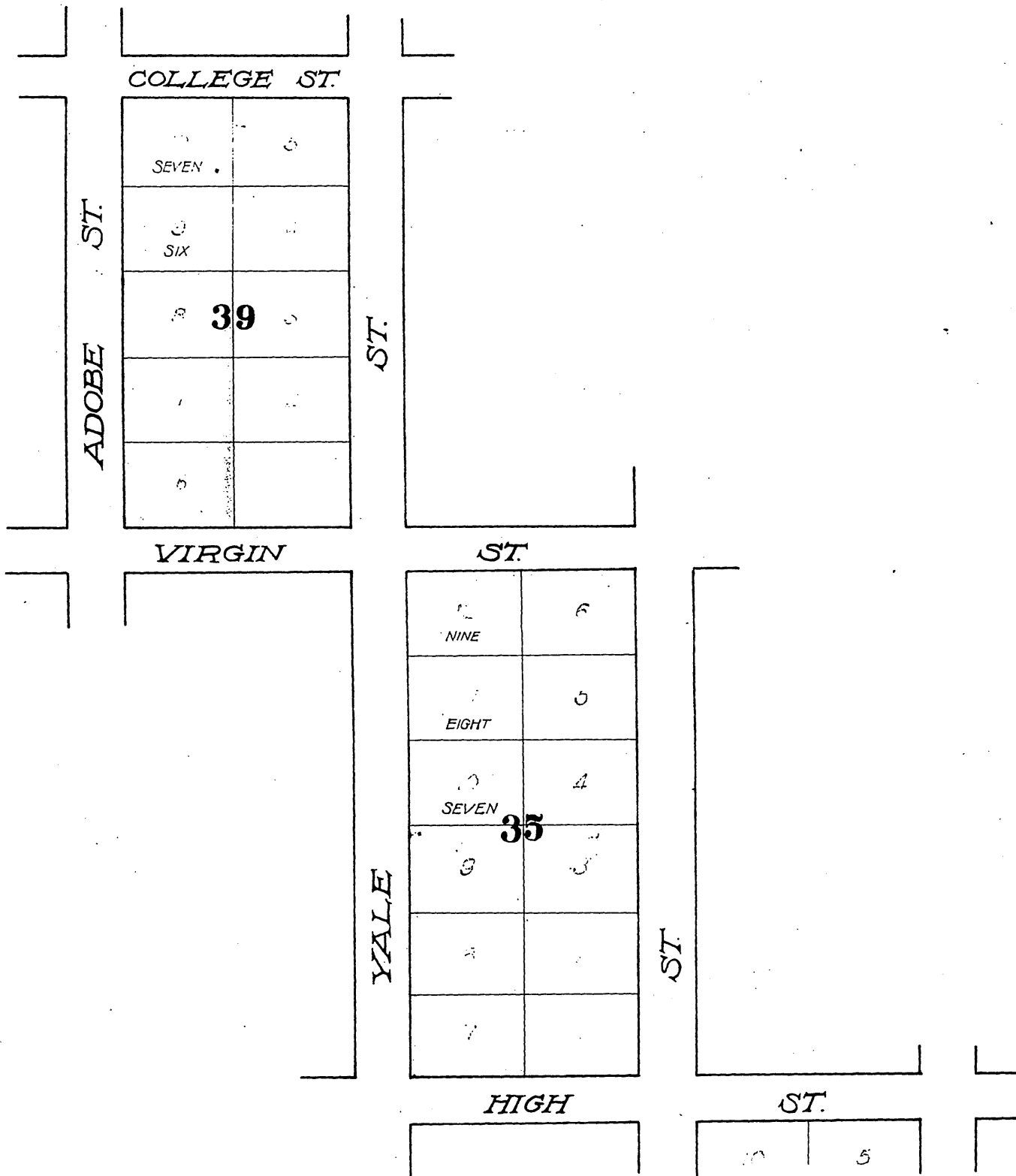
Scale 100 ft. = 1 in.

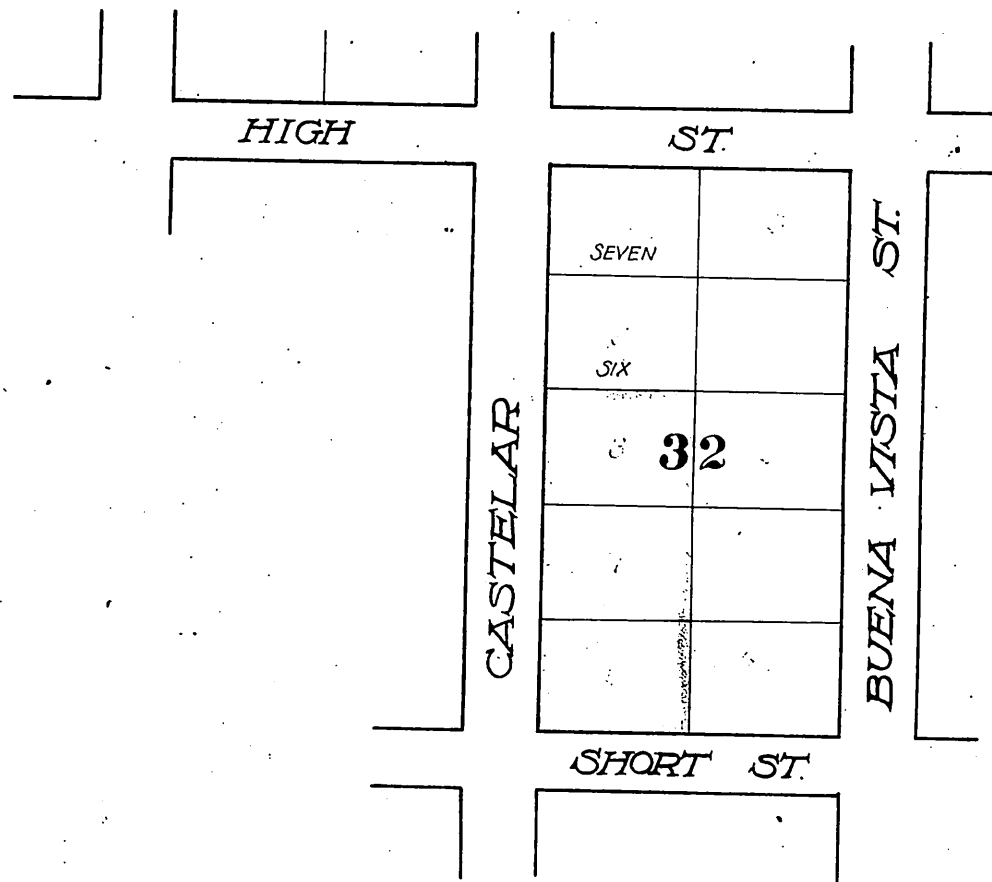
By M. KELLEHER

City Surveyor

I hereby certify that this map was adopted & declared an official map of the  
City of Los Angeles by the Council of the City of Los Angeles at its session of  
July 27, 1876

S. B. Caswell  
Clerk of the Council





Recorded Dec. 20, 1916

A-41