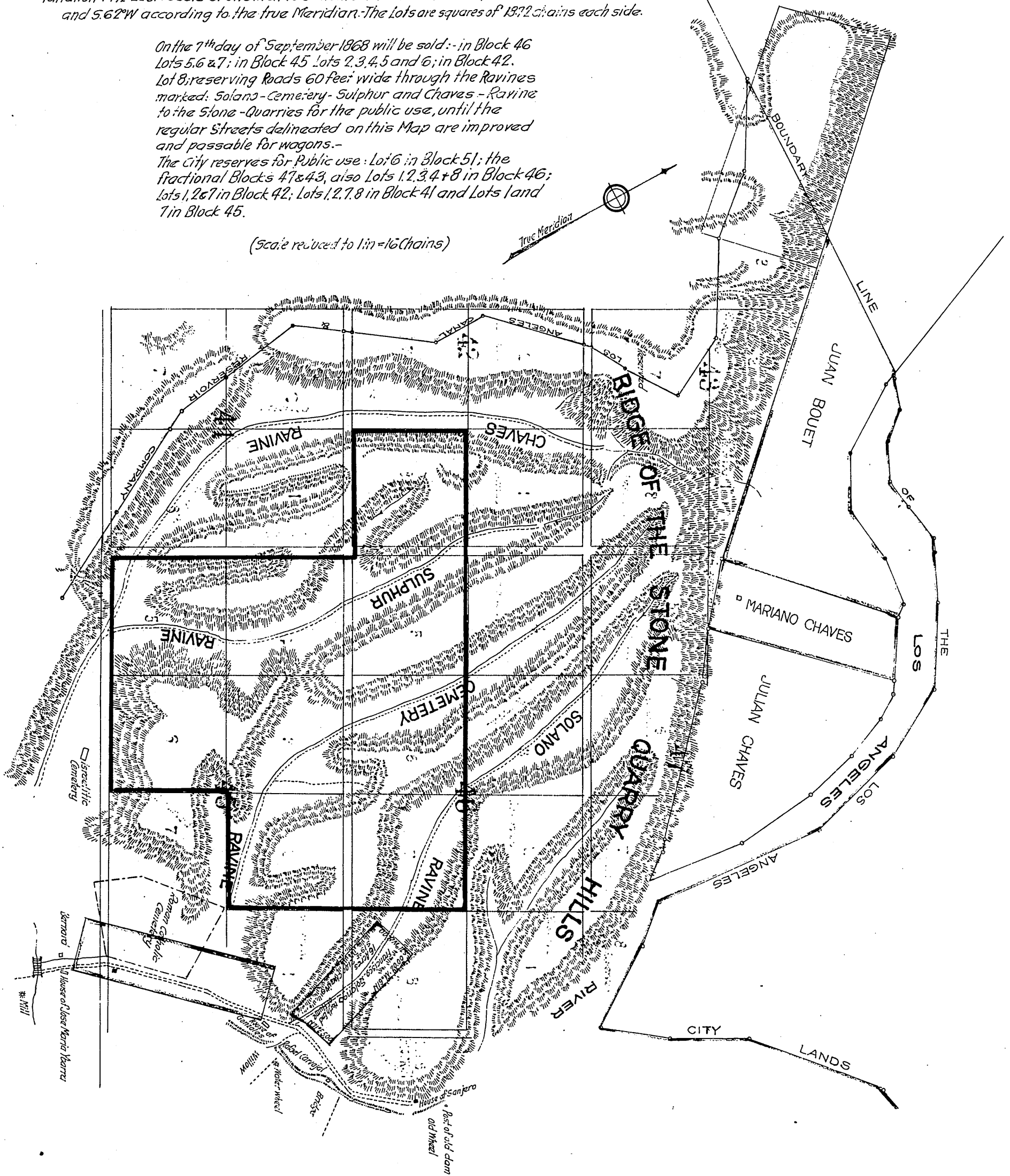


# MAP OF THE 35 ACRE TRACTS.

of the Los Angeles City Lands, Harcocks Survey, Situate on the Southern Slope of STONE QUARRY HILLS surveyed in August 1868 by Geo. Hansen County Surv. assisted by Captain Wm Moore & Augustus Anderson Variation 14 1/2° East. Scale of one Inch to 8 chains. The Streets are 5 Rods wide and run N 28° E and S 62° W according to the true Meridian. The Lots are squares of 137 1/2 chains each side.

On the 7th day of September 1868 will be sold:-- in Block 46 Lots 5, 6 & 7; in Block 45 Lots 2, 3, 4, 5 and 6; in Block 42, Lot 8; reserving Roads 60 feet wide through the Ravines marked: Solano - Cemetery - Sulphur and Chaves - Ravine to the Stone Quarries for the public use, until the regular Streets delineated on this Map are improved and passable for wagons. - The City reserves for Public use: Lot 6 in Block 51; the fractional Blocks 47 & 43, also Lots 1, 2, 3, 4 & 8 in Block 46; Lots 1, 2 & 7 in Block 42; Lots 1, 2, 7, 8 in Block 41 and Lots 1 and 7 in Block 45.

(Scale reduced to 1 in = 16 chains)



County Recorder's Office  
Los Angeles County

This Map filed for record November 23<sup>rd</sup> 1868 at request of A. King, Esq. City Attorney; and recorded in Book No. One (1) of "Miscellaneous Records", pages 467 and 468.

T.D. Mott Recorder  
By S.H. Mott Deputy.

A full true and correct copy of the Original recorded at request of City Clerk of Los Angeles, Cal. Dec. 3, 1918 at 8:30 A.M.

C.L. Logan County Recorder  
By E.E. Sallady, Deputy.

Official Map No. 4 of Los Angeles City.  
We hereby certify, that, by ordinance of the Mayor and Common Council of the City of Los Angeles, approved November 17<sup>th</sup> 1868, this map was adopted and declared to be an official Map of said City, to be designated as Number Four (4)

Witness our hands and the Seal of said City  
Cristoval Aguilar Mayor  
John King Pres. of the Common Council.



C. S. 8209