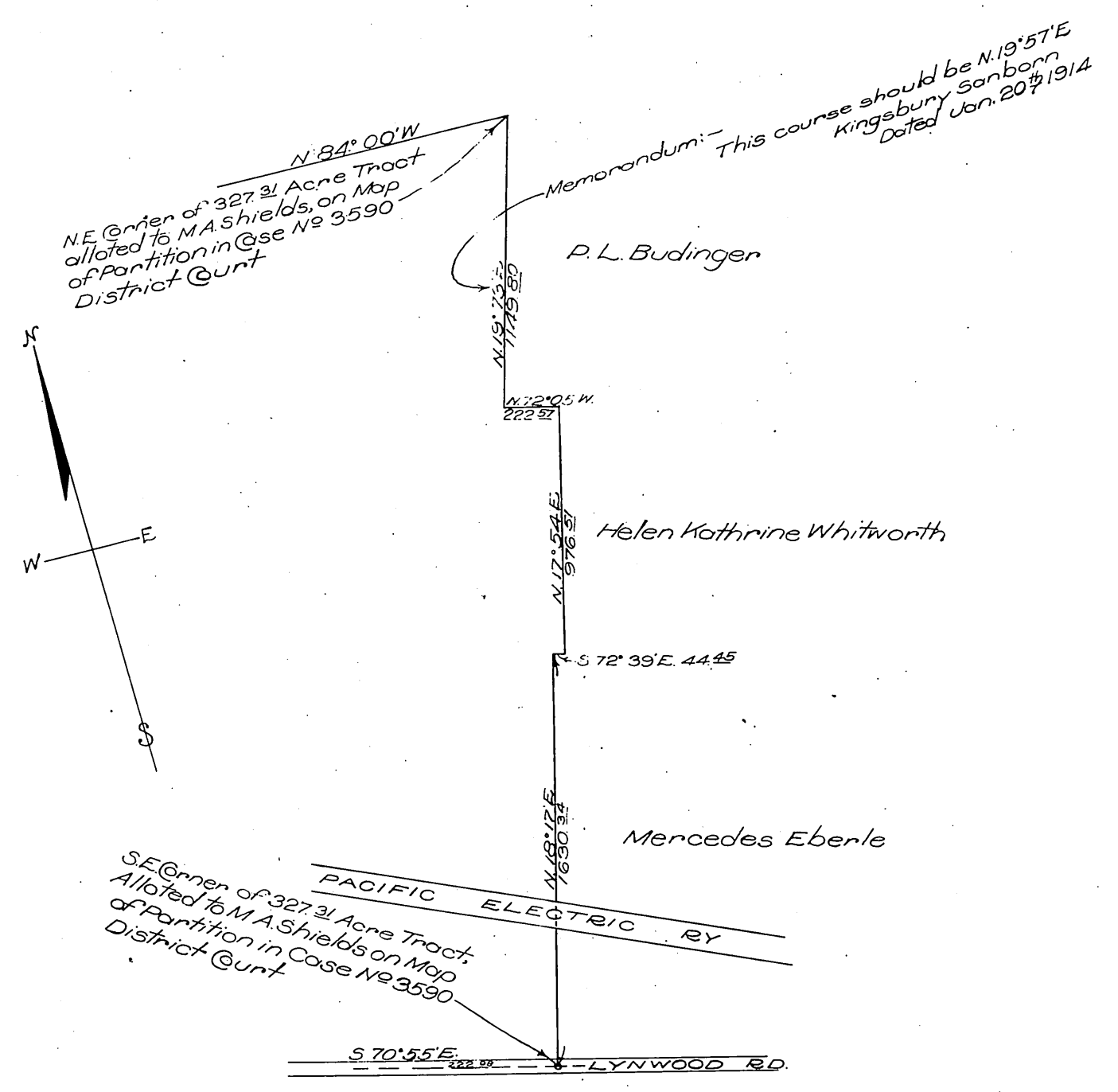


MAP

Showing the boundary line between the property allotted to M.A. Shields, on Map of Partition in Case, N^o 3590, District Court and the properties of P. L. Budinger, Helen Kathrine Whitworth and Mercedes Eberle As surveyed by E. T. Wright in October, 1905 and re-surveyed by Kingsbury Sanborn in December 1913
Scale - 1" = 200 ft.



Recorded Jan. 9 1914
(Scale reduced to 1" = 600')
E. T. Wright