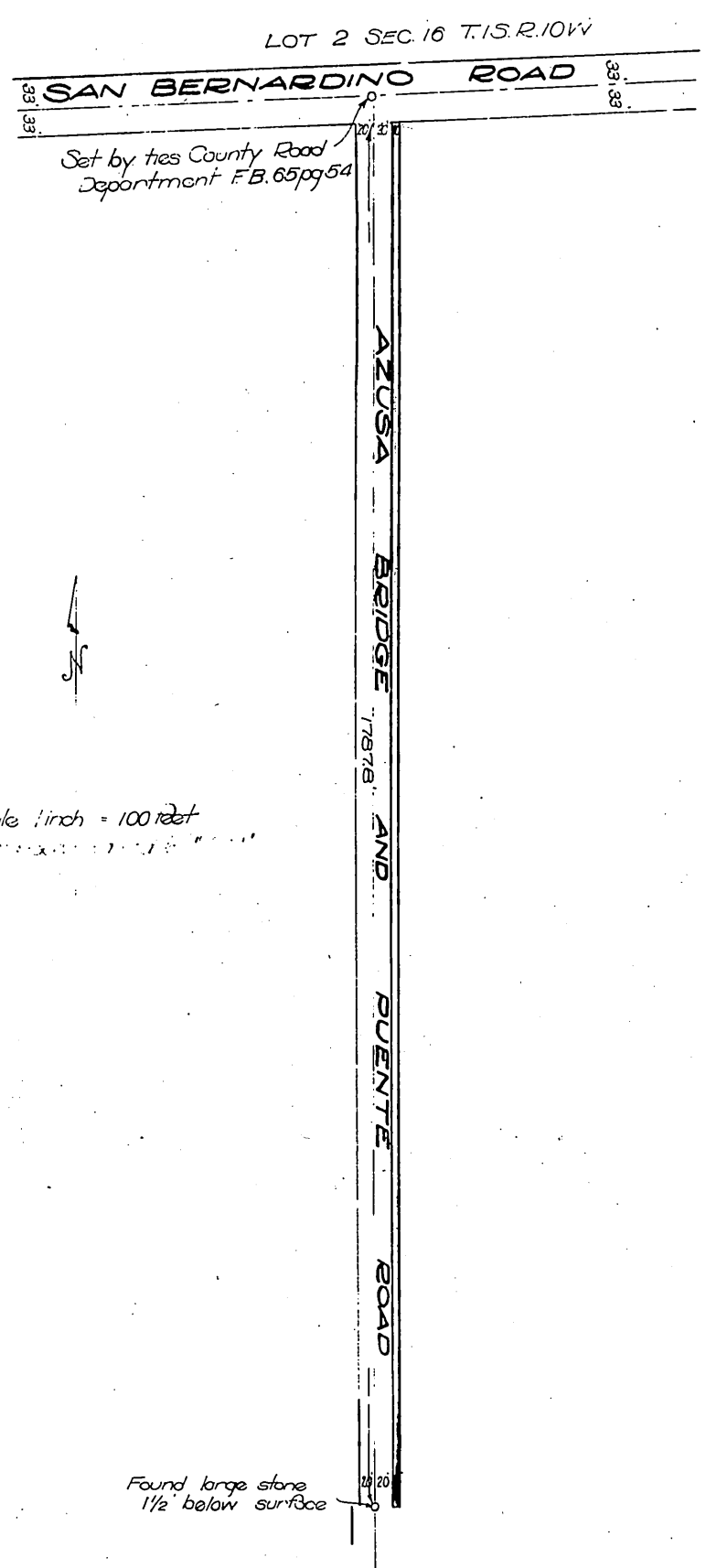


MR. 241 - 305, 306, 307



Scale 1 inch = 100 feet

PLAT

showing the vacation of a strip of land ten feet wide and eighteen hundred eighty seven and eight tenths feet long from the east side of AZUSA BRIDGE and PUENTE ROAD running south from the south side of SAN BERNARDINO ROAD, as ordered by the Board of Supervisors of Los Angeles County California, in session March 21st 1900 Road Book C page 40. Property of E.R. Coffman. Vacated land in color.

Survey

M.R. 241 - 305, 306, 307

Office Board of Supervisors
of Los Angeles County, California
March 21st 1900

In re AZUSA BRIDGE & PUENTE ROAD petition }
of G.T. Brown et al Covina Road District }

It is ordered that the prayer of the petitioners be and the same is hereby granted in part and is hereby ordered that the said AZUSA BRIDGE and PUENTE ROAD be and the same is hereby made and declared to be 40 feet wide for a distance of 1787.8 feet south from the south line of the SAN BERNARDINO ROAD by taking off from the East side of the said AZUSA BRIDGE and PUENTE ROAD a strip of land 10 feet wide and 1787.8 feet long. And it is further ordered that the said portion of the AZUSA BRIDGE and PUENTE ROAD be and the same is hereby vacated and abandoned and the land therein contained restored to acreage.

Recorded at request of G.C. Douglas
April 3, 1916