

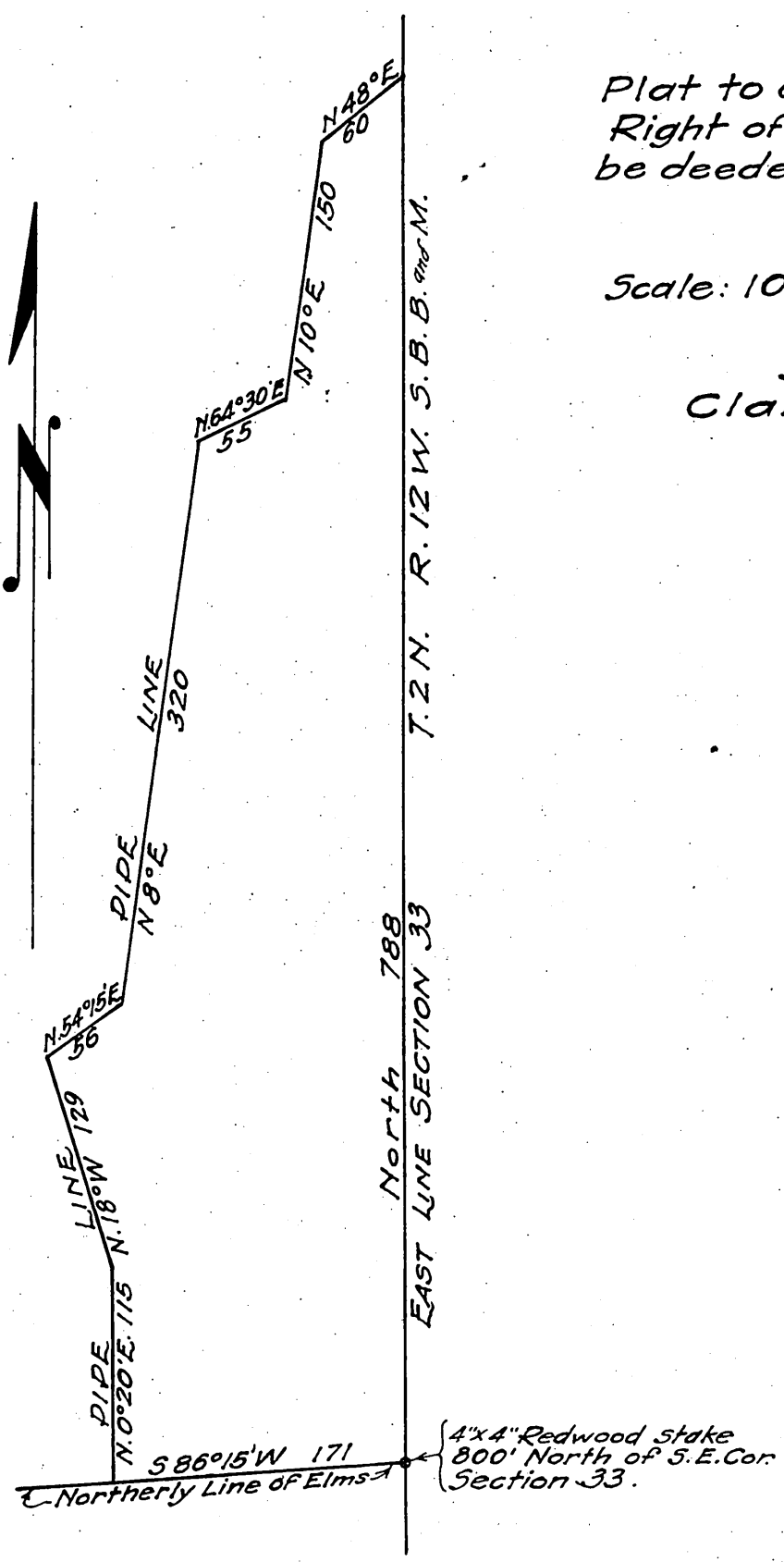
CLARENCE P. DAY  
CIVIL ENGINEER  
Pasadena, Cal.

Plat to accompany description of  
Right of Way for Pipe Line to  
be deeded from J. Frank Ware to  
Elms

Scale: 100' = 1"

June 2, 1908.

Surveyed by  
Clarence P. Day.  
Civil Engineer.



Recorded - July 3, 1916