

MR. 304-108, 109

**PLAT**  
 OF THE SURVEY OF  
**RANCHO POTRERO DE LA MISSION VIEJA DE SAN GABRIEL**  
 ALSO KNOWN AS  
**RANCHO POTRERO CHICO**  
 AND THE SURVEY OF  
**TRACT 46**

*Embracing Lots Nos. 1, Sections, 32 and 5,  
 Townships Nos. 1 and 2 South, Range No. 11 West,  
 San Bernardino Meridian  
 California  
 Scale 5 chains to an inch*

MR. 304-108, 109

Area Statement  
Rancho Potrero Chico 8346 acres  
Tract 46 " 1111 "

*Handwritten signature*

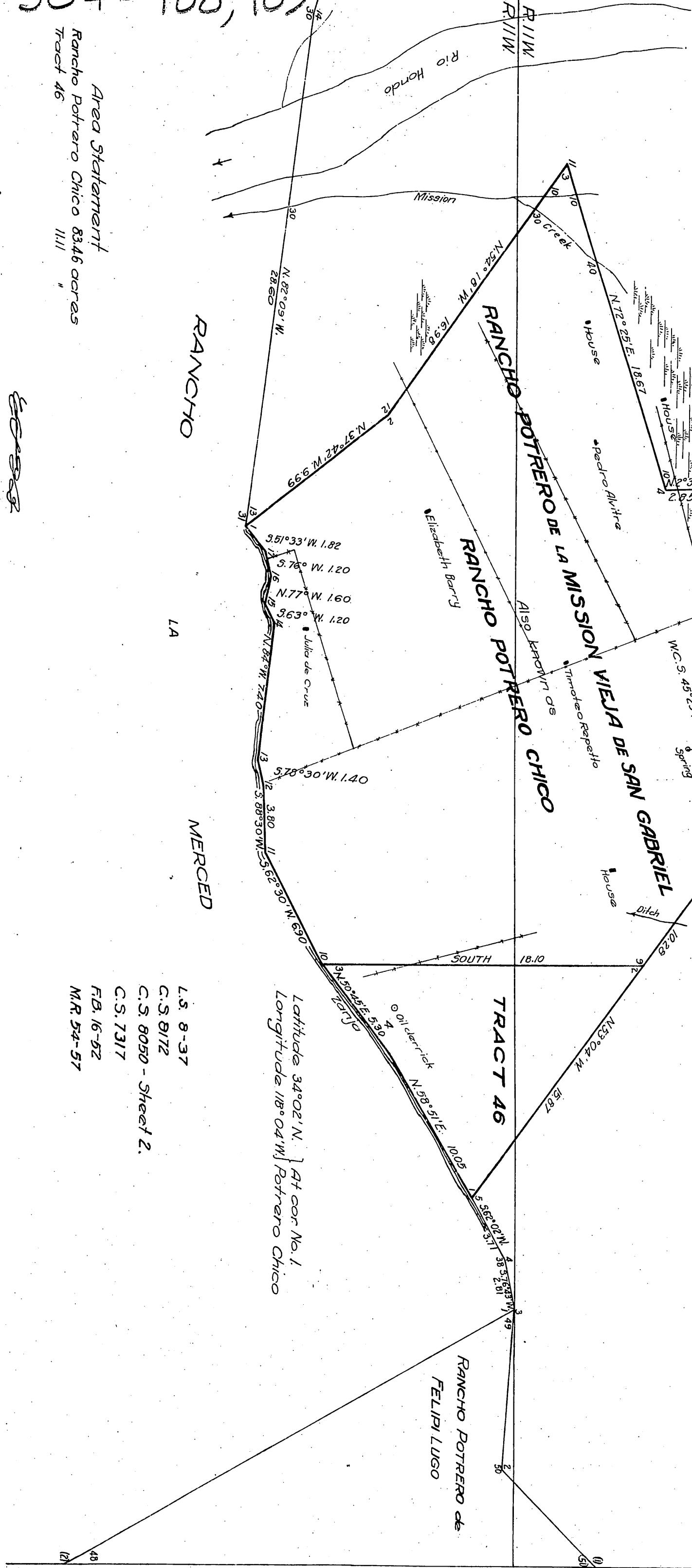
RANCHO

LA

MERCED

- L.S. 8-37
- C.S. 8172
- C.S. 8050 - Sheet 2.
- C.S. 7317
- F.B. 16-52
- M.R. 54-57

Latitude 34°02' N. } At cor No. 1  
Longitude 118°04' W } Potrero Chico



F.W.H.  
Comp. H.C.

Department of the Interior  
General Land Office

Washington D.C. July 2, 1920

The above plat correctly represents the survey of Rancho Potrero de la Mission Vieja de San Gabriel of Potrero Chico situated in Los Angeles County, California in T. 1 S. and 2 S., R. 11 W. S.B.M. and is hereby approved

*W. H. Woodson*  
Commissioner

Note:

Tract 46 as shown hereon represents the position and form of said tract under the original description as referred to the original survey located as such on the ground according to the best available evidence of its true position. The said tract was originally described as Lot 1, Section 32, T. 1 S., R. 11 W. and Lot 1, Section 5, T. 2 S., R. 11 W., which under date of January 23, 1875, was approved to the State of California as an indemnity selection approved List No. 5.

Note: The corners established by this survey along the north boundary of the Rancho La Merced between corners Nos. 31, and 38 and numbered as angle corners of the Rancho Potrero Chico only are intended to define the true north boundary of said Rancho La Merced as originally established along the rancho by deputy Hancock in 1858, but owing to errors in the said Hancock survey the courses, distances, and corner numbers could not be made consistent with the Hancock record for this reason no attempt was made by the survey as represented hereon to number these angle points with reference to the said Rancho La Merced.

I hereby certify that this is a correct copy of the official plat of survey of Rancho Potrero de la Mission Vieja de San Gabriel also known as Rancho Potrero Chico, on file in this office  
U.S. Surveyor General's Office  
San Francisco, California  
November 17, 1920  
*W. H. Woodson*  
U.S. Surveyor General for California

I hereby certify that the above plat of the reestablishment of a part of the boundaries of Rancho Potrero Grande and La Merced, the survey of Rancho Potrero de la Mission Vieja de San Gabriel or Potrero Chico and the survey by mezes and bounds of Tract 46, embracing lots Nos 1, of Sections 32 and 5, T. 1 S., R. 11 W., San Bernardino Meridian, California, executed by Francis E. Joy U.S. Cadastre Engineer, March 15 to March 18, 1920, under special instructions dated December 13, 1919, Group 60, is strictly conformable to the field notes of the surveys thereof on file in this office which have been examined and approved

U.S. Surveyor General's Office  
San Francisco California  
June 9, 1920

*W. H. Woodson*  
U.S. Surveyor General  
for California