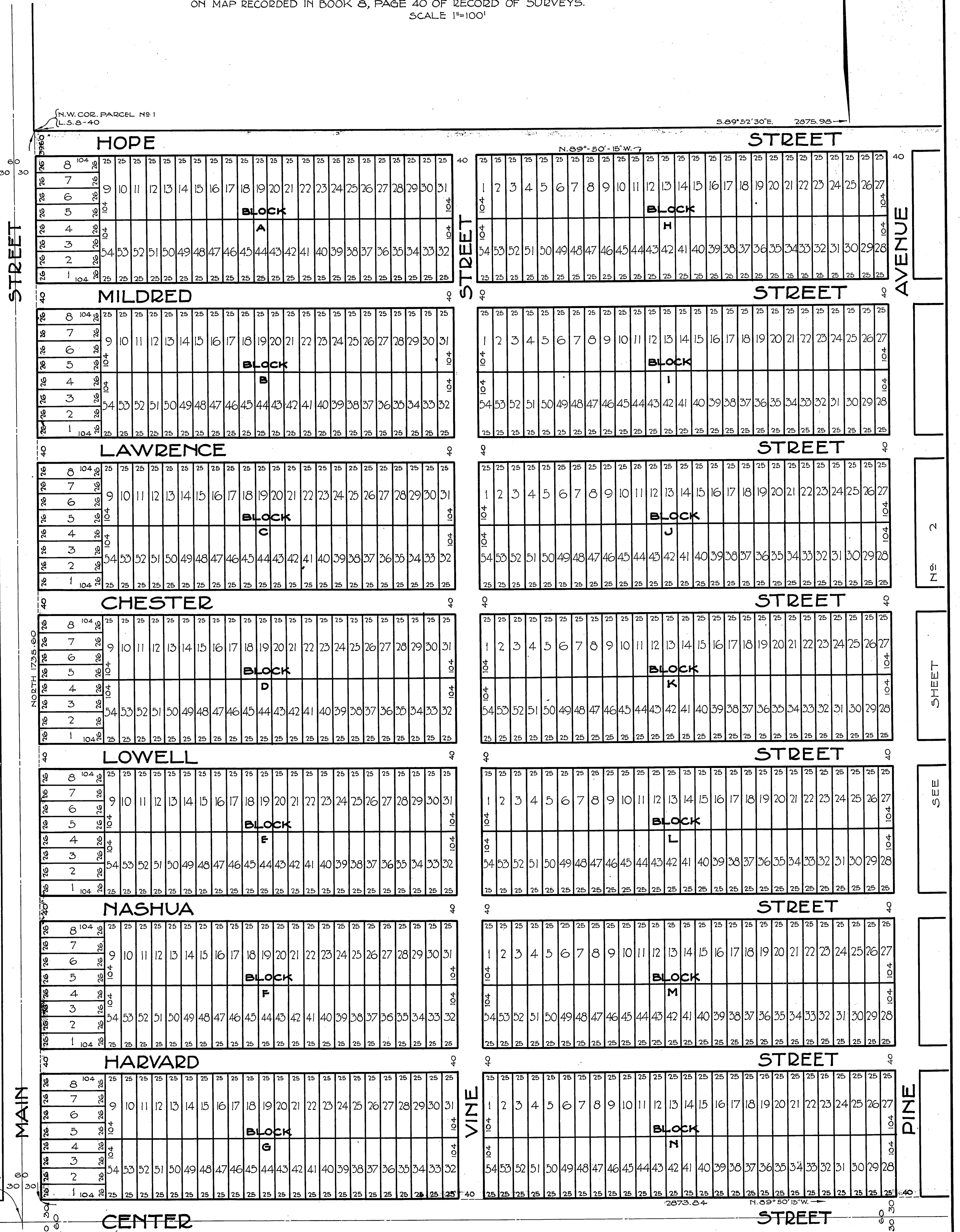


PETROLEUM CENTER

BEING A SUBDIVISION OF A PORTION OF THE S.W.1/4 OF SECTION 19 T.35, R.11W. OF THE RANCHO LOS COYOTES AS SHOWN ON COUNTY SURVEYORS MAP No 6282, BEING ALSO THE SAME PROPERTY AS SHOWN WITHIN THE COLORED BORDER LINE ON MAP RECORDED IN BOOK 8, PAGE 40 OF RECORD OF SURVEYS. SCALE 1"=100'

N.W. COR. PARCEL No 1
L.S. 8-40

S. 89° 52' 30" E. 2675.98



SHEET 2

SEE

PINE

S.W. COR. SEC. 19, T.35, R.11W.
L.S. 8-40

STREET

STREET

AVENUE

NORTH 1735.60

MAIN

VINE

PINE

HOPE

STREET

MILDRED

STREET

LAWRENCE

STREET

CHESTER

STREET

LOWELL

STREET

NASHUA

STREET

HARVARD

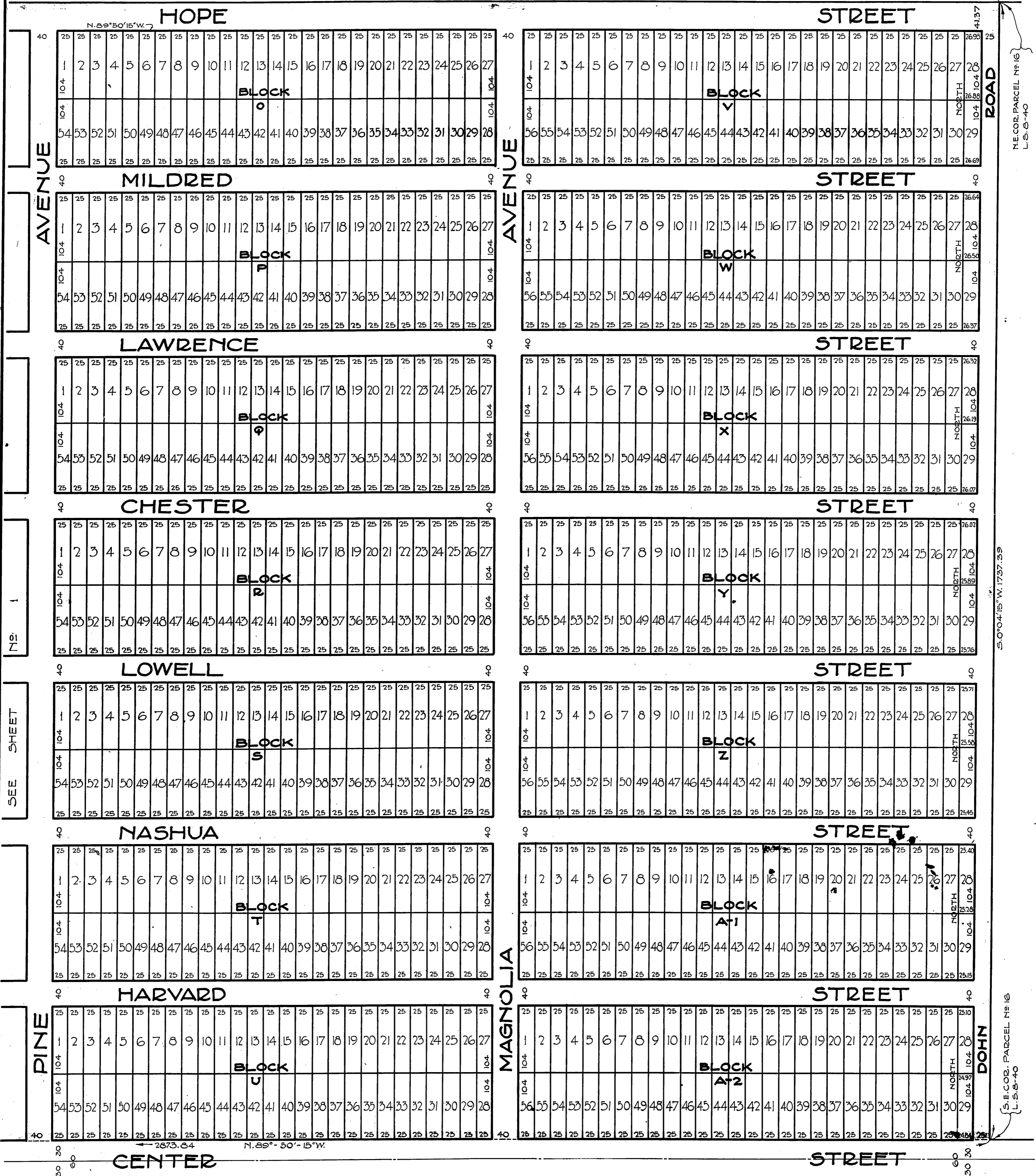
STREET

CENTER

STREET

PETROLEUM CENTER

S. 89° 52' 30" E. 2875.93



IN RE APPROVAL OF PETROLEUM CENTER, IN ACCORDANCE WITH SECTION 3658A OF THE POLITICAL CODE STATE OF CALIFORNIA.

IT APPEARING THAT THE ATTACHED MAP OF PETROLEUM CENTER HAS BEEN SUBDIVIDED INTO LOTS AND BLOCKS AND NO MAP APPEARING OF RECORD COVERING THE SAME AND THE COUNTY SURVEYOR HAVING BEEN DIRECTED BY THE BOARD OF SUPERVISORS TO MAKE SAID MAP; NOW THEREFORE ON MOTION OF SUPERVISOR [Name], SECONDED AND CARRIED, IT IS ORDERED THAT THE ATTACHED MAP OF PETROLEUM CENTER BE AND THE SAME IS HEREBY APPROVED AND ADOPTED AS THE OFFICIAL MAP OF SAID PETROLEUM CENTER, IN ACCORDANCE WITH SECTION 3658A OF THE POLITICAL CODE OF THE STATE OF CALIFORNIA, FOR THE PURPOSE OF DESCRIBING SAID PROPERTY IN DEEDS, CONVEYANCES, CONTRACTS, OR OBLIGATIONS, AND FOR THE PURPOSE OF MAKING ASSESSMENTS. ALL STREETS, LANES, ALLEYS, ROADS AND OTHER PORTIONS OF LAND USED AND INTENDED FOR PUBLIC ROADWAYS AND SHOWN ON SAID ATTACHED MAP SHALL BE AND THE SAME ARE HEREBY DECLARED TO BE PUBLIC HIGHWAYS. THE CLERK OF THIS BOARD IS DIRECTED TO ENDORSE ON THE FACE OF SAID MAP A COPY OF THIS ORDER AUTHENTICATED BY THE SEAL OF THE BOARD OF SUPERVISORS.

APPROVED:

CHAIRMAN, BOARD OF SUPERVISORS: *R. J. Cogswell* 1st. SUPERVISORIAL DISTRICT
 2nd. SUPERVISORIAL DISTRICT: *J. E. Woodley*
 5th. SUPERVISORIAL DISTRICT: *Henry W. Knight*

I HEREBY CERTIFY THAT THE FOREGOING ORDER WAS ADOPTED BY THE BOARD OF SUPERVISORS AT A MEETING OF SAID BOARD HELD June 12, 1925 AT Los Angeles, California.
 L. E. LAMPTON, COUNTY CLERK AND EX-OFFICIO CLERK OF THE BOARD OF SUPERVISORS OF THE COUNTY OF LOS ANGELES, STATE OF CALIFORNIA.

BY *[Signature]* DEPUTY

I, J. E. ROCKHOLD, HEREBY CERTIFY THAT I AM THE COUNTY SURVEYOR OF THE COUNTY OF LOS ANGELES, STATE OF CALIFORNIA, AND THAT THIS MAP WAS MADE UNDER MY DIRECTION APRIL 10, 1925, IN ACCORDANCE WITH SECTION 3658A OF THE POLITICAL CODE OF THE STATE OF CALIFORNIA, UNDER THE DIRECTION AND WITH THE APPROVAL OF THE BOARD OF SUPERVISORS, BY AN ORDER PASSED BY SAID BOARD ON THE 6 DAY OF APRIL, 1925.

J. E. Rockhold
 COUNTY SURVEYOR

REC. PARCEL FIG. L.S. 40

S. 0° 04' 15" W. 1737.39

S. E. COR. PARCEL No 16 L.S. 40