

RIDEOUT TRACT

Partly in the City of Whittier and
Partly in the County of Los Angeles.
Being a subdivision of Lots 58, 59, 60, & 62 and a portion of Lots
61-63-64 & 65, Citrus Grove Heights as per map recorded in
Book 22, Pages 86 & 87, of Maps, Records of Los Angeles County,
California

37

1/3 map

Freeman
Free Cashier

Scale 1" = 150'

Feb. 7, 1928

Investigation shows that certain above described portions of Citrus Grove Heights, known as the Rideout Tract, have been resubdivided into smaller parcels of land and that no map appearing of record covering the same and the County Surveyor having been directed by the Board of Supervisors to make said map; now therefore on motion of Supervisor *Beaty* duly seconded and carried, it is ordered that the attached map of the Rideout Tract be and the same is hereby approved and adopted as the Official Map of said Rideout Tract, in accordance with Section 3658A of the Political Code of the State of California, for the purpose of describing said property in making assessments. The Clerk of this Board is directed to endorse on the face of said map a copy of this order authenticated by the Seal of the Board of Supervisors.

I hereby certify that the foregoing order was adopted by the Board of Supervisors at a meeting of said Board held February 14, 1928.
L.E. Lampton, County Clerk and Ex-officio Clerk of the Board of Supervisors of the County of Los Angeles, State of California
By *Marie R. Beaty*
Deputy

J.E. ROCKHOLD, hereby certify that I am the County Surveyor of the County of Los Angeles, State of California, and that this map was made under my direction Feb. 7, 1928, in accordance with Section 3658A of the Political Code of the State of California, under the direction and with the approval of the Board of Supervisors, by an order passed by said Board on Feb. 7, 1927

J.E. Rockhold
County Surveyor

R. J. McMillan
Chairman, Board of Supervisors,
4th Supervisorial District.

Fred T. Beaty
1st Supervisorial District

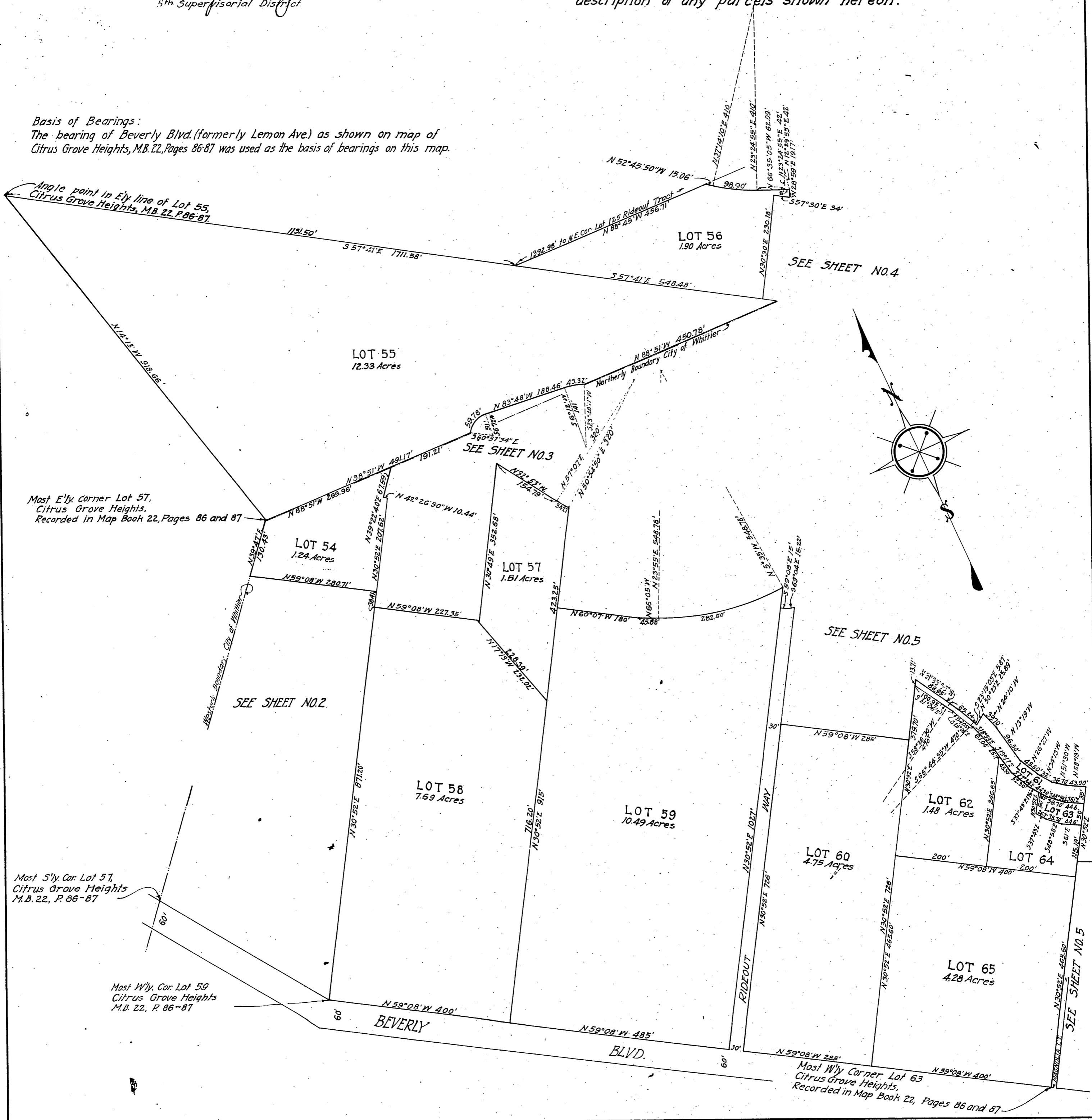
J. H. Bean
6th Supervisorial District

Sidney Evans
3rd Supervisorial District

Newry W. Wright
5th Supervisorial District

NOTE:
This map was compiled from descriptions in recorded deeds, Torrens title certificates and other available data. The data shown hereon conforms to record wherever practicable, missing data being supplied by calculation. This map is intended for assessment purposes only and not for the conveyance of title or for writing of legal description of any parcels shown hereon.

Basis of Bearings:
The bearing of Beverly Blvd. (formerly Lemon Ave.) as shown on map of Citrus Grove Heights, M.B. 22, Pages 86-87 was used as the basis of bearings on this map.



Most E'ly. Corner Lot 57,
Citrus Grove Heights,
Recorded in Map Book 22, Pages 86 and 87

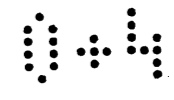
Most S'ly. Cor. Lot 57,
Citrus Grove Heights
M.B. 22, P. 86-87

Most W'ly. Cor. Lot 59
Citrus Grove Heights
M.B. 22, P. 86-87

Most W'ly. Corner Lot 63
Citrus Grove Heights,
Recorded in Map Book 22, Pages 86 and 87

RIDEOUT TRACT

Partly in the City of Whittier and
Partly in the County of Los Angeles
Scale 1" = 50'

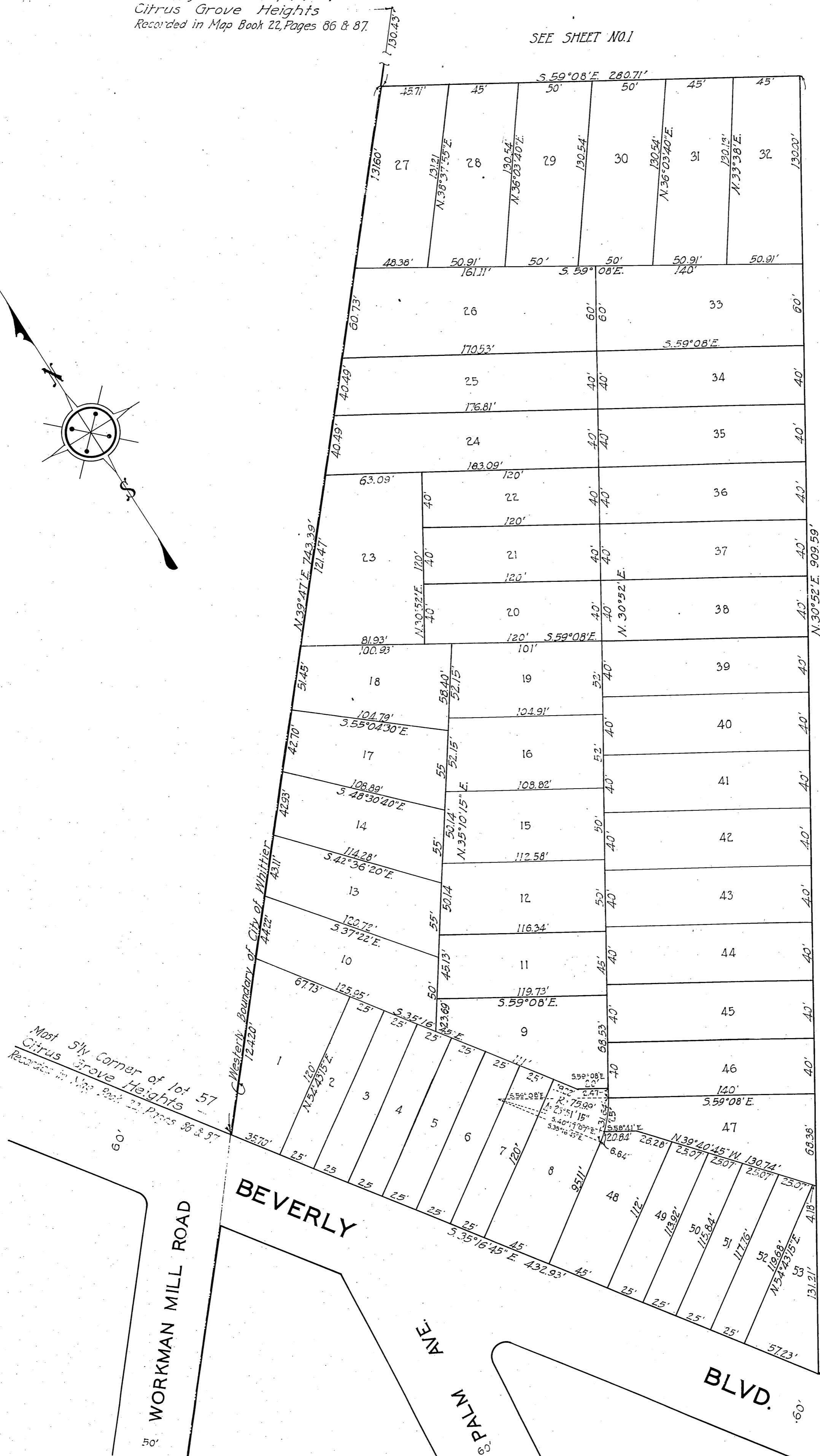
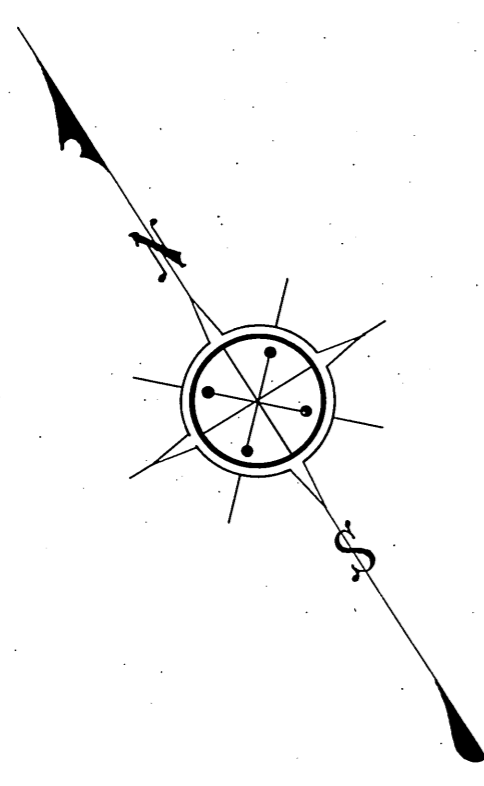


37

Westerman
Free Cashier

Most E'ly Corner of lot 57
Citrus Grove Heights
Recorded in Map Book 22, Pages 86 & 87.

SEE SHEET NO. 1



SEE SHEET NO. 1

Most S'ly Corner of lot 57
Citrus Grove Heights
Recorded in Map Book 22, Pages 86 & 87.

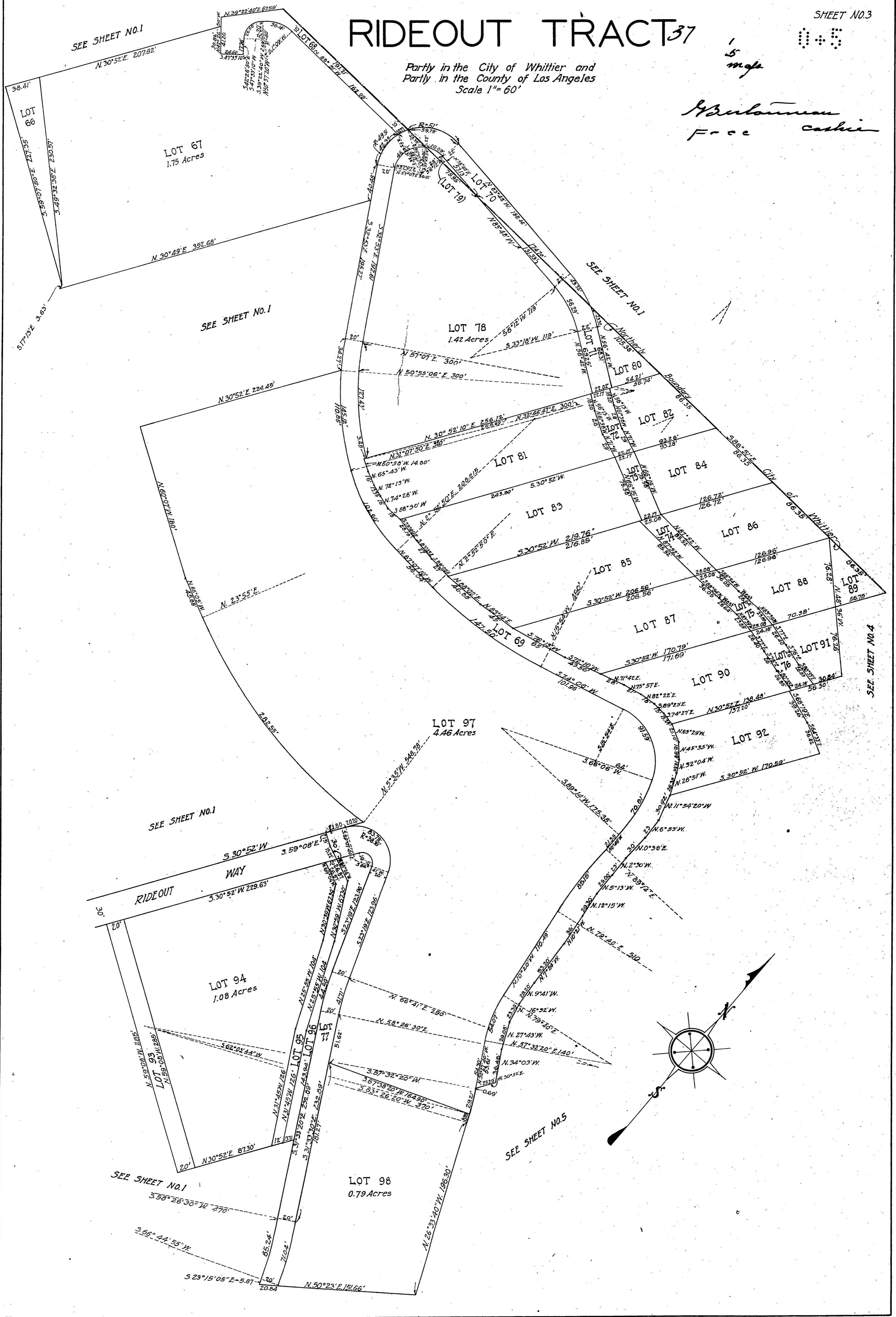
Most W'ly Cor. Lot 59
Citrus Grove Heights
M.B. 22, P. 86 & 87.

RIDEOUT TRACT³⁷

Partly in the City of Whittier and
Partly in the County of Los Angeles
Scale 1" = 60'

1
5
mgs

Abulman
Free cash



SEE SHEET NO.1

SEE SHEET NO.1

SEE SHEET NO.1

SEE SHEET NO.1

SEE SHEET NO.1

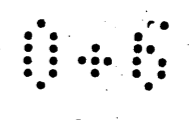
SEE SHEET NO.5

SEE SHEET NO.4

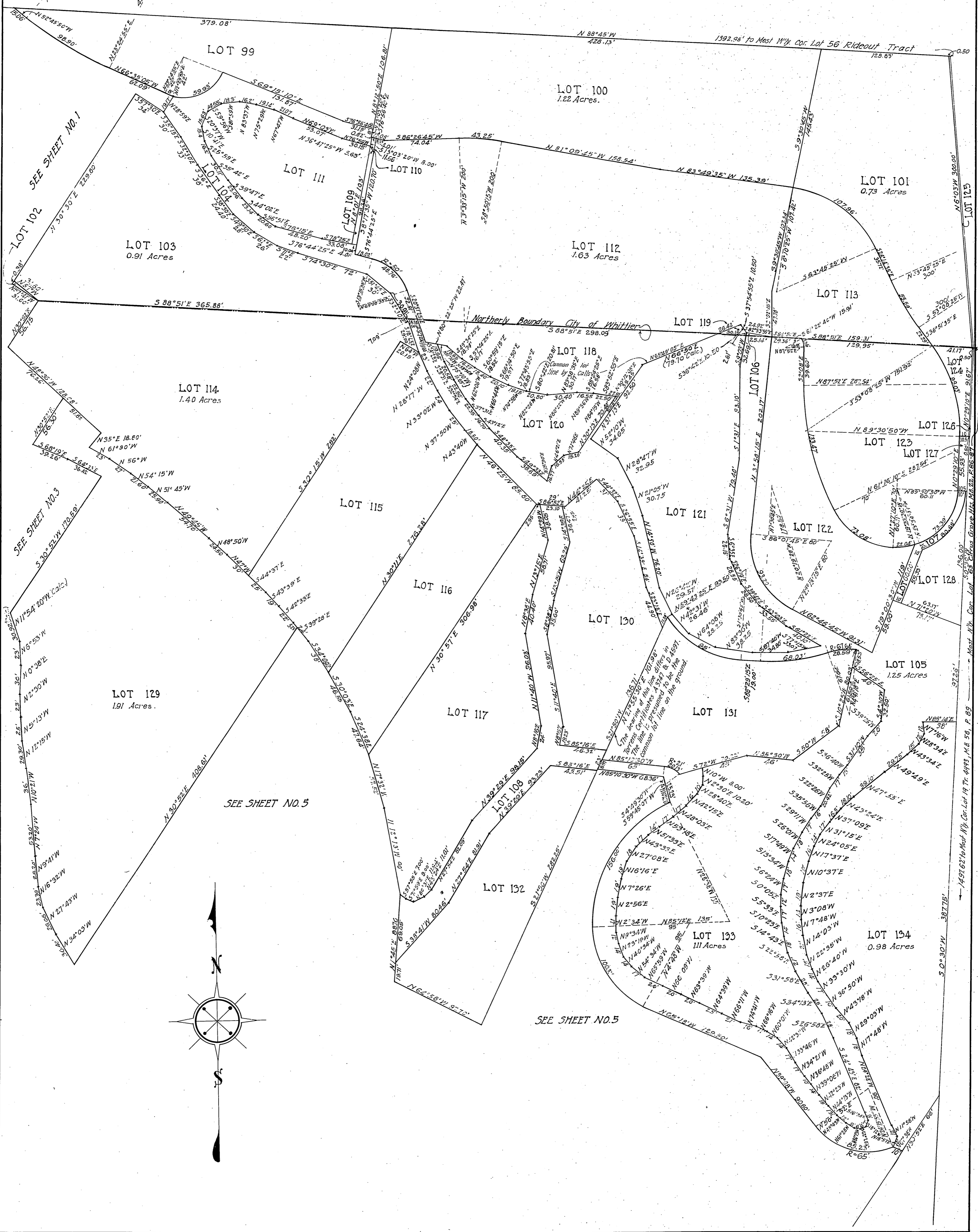
RIDEOUT TRACT

Partly in the City of Whittier and
Partly in the County of Los Angeles
Scale 1" = 60'

37
1
6
Map



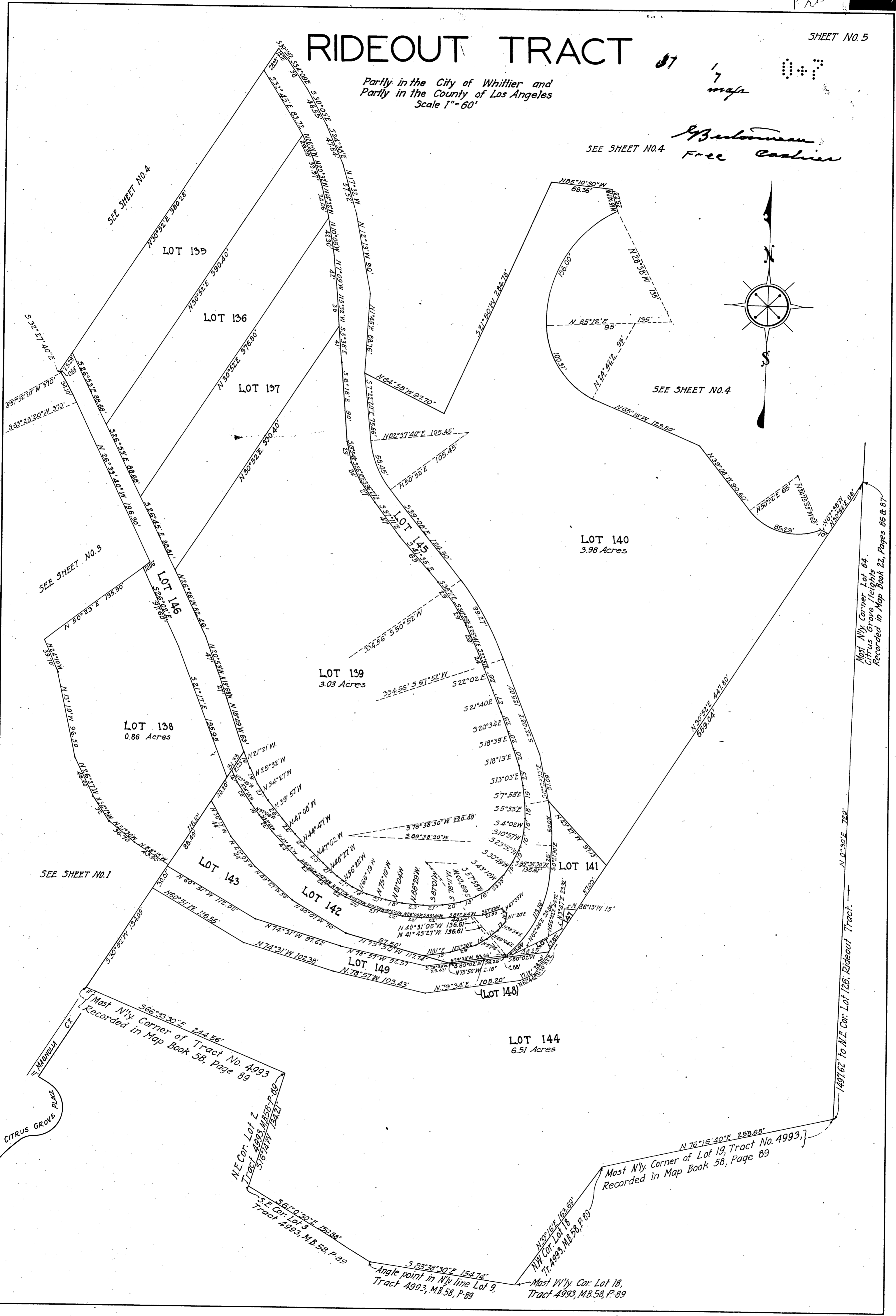
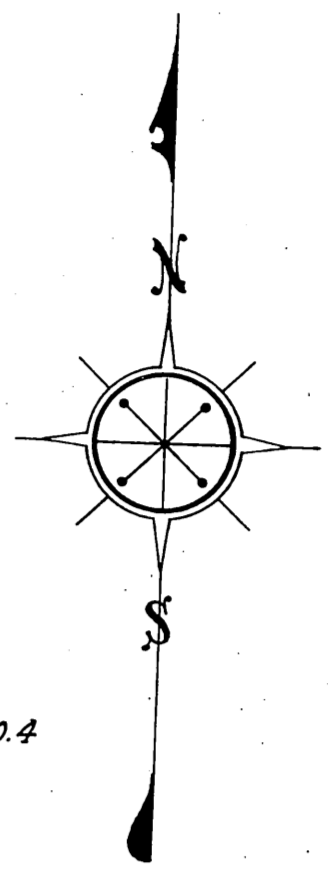
Spertouman
Free Cashier



RIDEOUT TRACT

Partly in the City of Whittier and
Partly in the County of Los Angeles
Scale 1" = 60'

SEE SHEET NO. 4
Bentleyman
Free Cashier



SEE SHEET NO. 4

LOT 135

LOT 136

LOT 137

LOT 146

LOT 138
0.86 Acres

LOT 139
3.03 Acres

LOT 143

LOT 142

LOT 149

(Lot 148)

LOT 144
6.51 Acres

LOT 140
3.98 Acres

LOT 141

SEE SHEET NO. 3

SEE SHEET NO. 1

SEE SHEET NO. 4

Most N'y. Corner Lot 64.
Citrus Grove Heights
Recorded in Map Book 22, Pages 86 & 87

1497.62' to M.E. Cor. Lot 126, Rideout Tract.

Most N'y. Corner of Tract No. 4993
Recorded in Map Book 58, Page 89

Most N'y. Corner of Lot 19, Tract No. 4993,
Recorded in Map Book 58, Page 89

Angle point in N'y. line Lot 9,
Tract 4993, M.B. 58, P. 89

Most W'y. Cor. Lot 18,
Tract 4993, M.B. 58, P. 89

CITRUS GROVE PLACE

MARQUINA CT.