

PROPERTY OF SOUTHERN CALIFORNIA EDISON COMPANY LTD. MAP NO. 1

SHEET 1 OF 2 SHEETS
IN THE CITY OF TORRANCE

Being a Subdivision of a portion of Lots 38, 39, 40 & 45 of McDonald Tract recorded in Book 15 Pages 21 & 22 of Miscellaneous Records and a portion of Lots 14, 19, & 33 of Strawberry Home Tract recorded in Book 6 Page 119 of Maps Records of the County of Los Angeles, State of California.
Los Angeles
J.E. Rockhold
California
November 1931.
County Surveyor.

Scale: 1" = 200 Feet.

The bearing of Electric Street as shown on County Surveyor's Map No 7184 was used as the basis for bearings shown upon this Map.
This Map was prepared from a Survey made under the supervision of Geo. H. Starbuck, Licensed Surveyor and Engineer for the Southern California Edison Company Ltd., Between October 1928 and November 1931.

We hereby certify that on the 14 day of Dec. 1931, the within map was approved and adopted as an official map by the Board of Supervisors of the County of Los Angeles by resolution duly adopted, as follows, to-wit:
WHEREAS, The Board of Supervisors of the County of Los Angeles, State of California, pursuant to the provisions of Section 3658a of the Political Code of the State of California, did, by an order adopted on the 7th day of December 1931, direct the preparation by the County Surveyor of an Official Map of certain property of Southern California Edison Company, Ltd., consisting of approximately 46 acres in the McDonald Tract and Strawberry Home Tract in the City of Torrance.

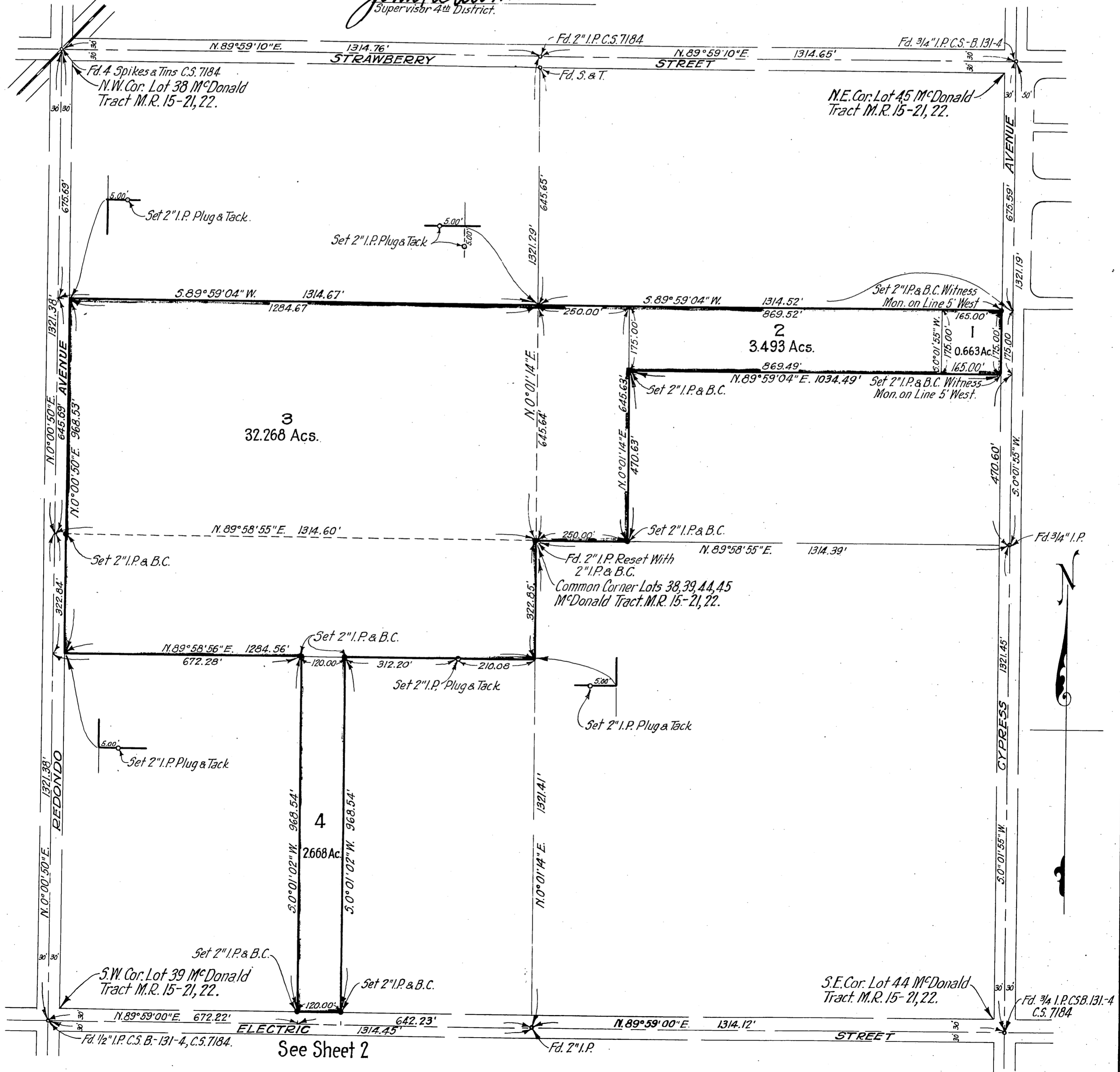
NOW THEREFORE BE IT RESOLVED THAT, said map entitled "Property of Southern California Edison Company Ltd. Map No 1" be and the same is hereby approved and adopted.
The foregoing resolution was, on the 14 day of Dec. 1931, adopted by the Board of Supervisors of the County of Los Angeles, State of California.

L.E. LAMPTON
County Clerk and Ex-Officio
Clerk of the Board of Supervisors
of the County of Los Angeles.
By Manuel S. Beatty
Deputy.

Henry N. Wigney
Chairman of Board of Supervisors
Supervisor 1st District
Joseph A. Hatcher
Supervisor 1st District
Frank D. Shaw
Supervisor 2nd District
John Mahoney
Supervisor 3rd District
John Quinn
Supervisor 4th District

ATTEST: L.E. LAMPTON
County Clerk and ex-officio
Clerk of the Board of Supervisors
of the County of Los Angeles.
By Manuel S. Beatty
Deputy.

Dec 17 1931
3 PM
Official
Gustavson
Fire

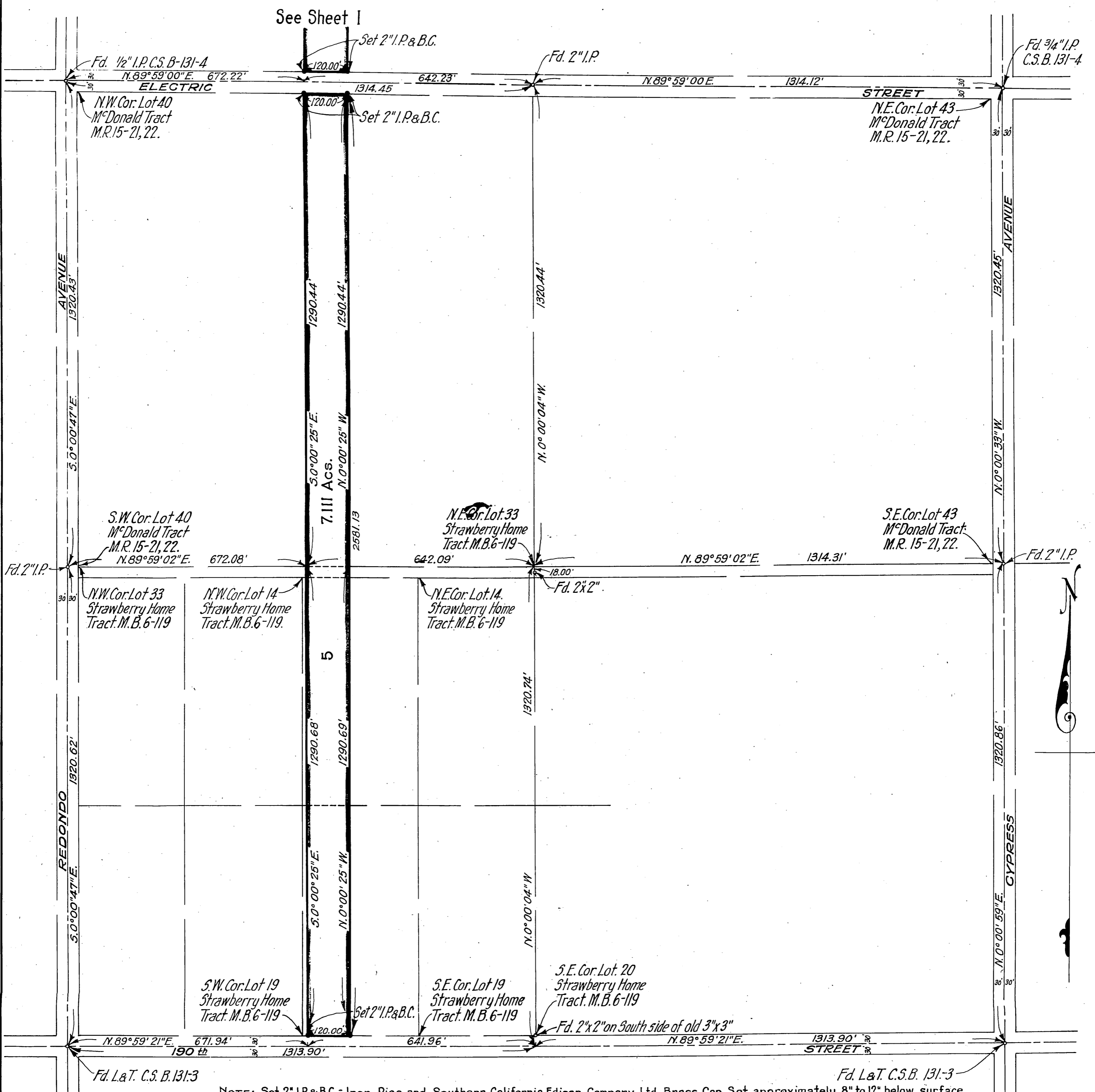


NOTE: Set 2" I.P. & B.C. = 2" Iron Pipe and Southern California Edison Company Ltd. Brass Cap Set approximately 8" to 12" below Surface.

PROPERTY OF SOUTHERN CALIFORNIA EDISON COMPANY LTD.

MAP No. 1
SHEET 2 OF 2 SHEETS
Scale: 1 inch = 200 feet.

Dec 17 1931
41 3 P.M.
official
48
1
W. B. ...
FREE



NOTE: Set 2" I.P. & B.C. = Iron Pipe and Southern California Edison Company Ltd. Brass Cap Set approximately 8" to 12" below surface.