

PROPERTY OF SOUTHERN CALIFORNIA EDISON COMPANY LTD.

MAP NO. 2

SHEET I OF 3 SHEETS

SCALE 1" = 200'

Dec 17 - 1931
41 3 P.M.
1
49
Official Map

All in the City of Long Beach
Being a subdivision of lot 6 & a portion of lots 1, 2 & 3 Block 24 of the California Cooperative Colony Tract per map recorded in Book 21 pages 15 & 16 of Miscellaneous Records; a portion of lot III and a portion of the tracts of land marked "Widney" & "Maddox" on the map of the Hellman Tract per Miscellaneous Records Book 2 pages 524 & 525; and a portion of lots 2 & 3 of J.S. Robinson's Subdivision per map recorded in Book 12, page 63 of Miscellaneous Records all records of Los Angeles County, and Compton & Dominguez Road vacated by resolution N^o C 3720 adopted Dec. 11, 1928 by the City of Long Beach, Cal.

Los Angeles California November 1931
J. E. Rockhold County Surveyor

William
Free

The bearing of the \pm of Atlantic Ave. as shown on C.S. Map No. 8940 was taken as the basis of bearings shown on this map.

This map was prepared from a survey made under the supervision of Geo. H. Starbuck, Licensed Surveyor & Engineer for the Southern California Edison Company Ltd. July 1931

We hereby certify that on the 14th day of December, 1931, the within map was approved and adopted as an official map by the Board of Supervisors of the County of Los Angeles by resolution duly adopted as follows, to-wit:

WHEREAS, the Board of Supervisors of the County of Los Angeles, State of California, pursuant to the provisions of Section 3658a of the Political Code of the State of California, did, by an order adopted on the 7th day of December, 1931, direct the preparation by the County Surveyor of an official map of certain property of Southern California Edison Company, Ltd., consisting of approximately 59 acres in the California Cooperative Colony Tract, the Hellman Tract and J.S. Robinson's Subdivision, in the City of Long Beach.

NOW THEREFORE, be it resolved that said map entitled "Property of Southern California Edison Company Ltd., Map No. 2" be and the same is hereby approved & adopted.

The foregoing resolution was, on the 14th day of December, 1931, adopted by the Board of Supervisors of the County of Los Angeles, State of California.

ATTEST: L. E. LAMPTON
County Clerk and ex-officio
Clerk of the Board of Supervisors
of the County of Los Angeles.
By Manuel B. Beatty
Deputy

L. E. LAMPTON
County Clerk and ex-officio
Clerk of the Board of Supervisors
of the County of Los Angeles.
By Manuel B. Beatty
Deputy

Henry H. Wright
Chairman of the Board of Supervisors
Supervisor 5th. District
Hugh A. Fletcher
Supervisor 1st. District
Frank D. Fran
Supervisor 2nd. District
J. Don Mahaffey
Supervisor 3rd. District
John R. Quinn
Supervisor 4th. District

Dec 17-1931
41 3 PM
1
50
Official Maps

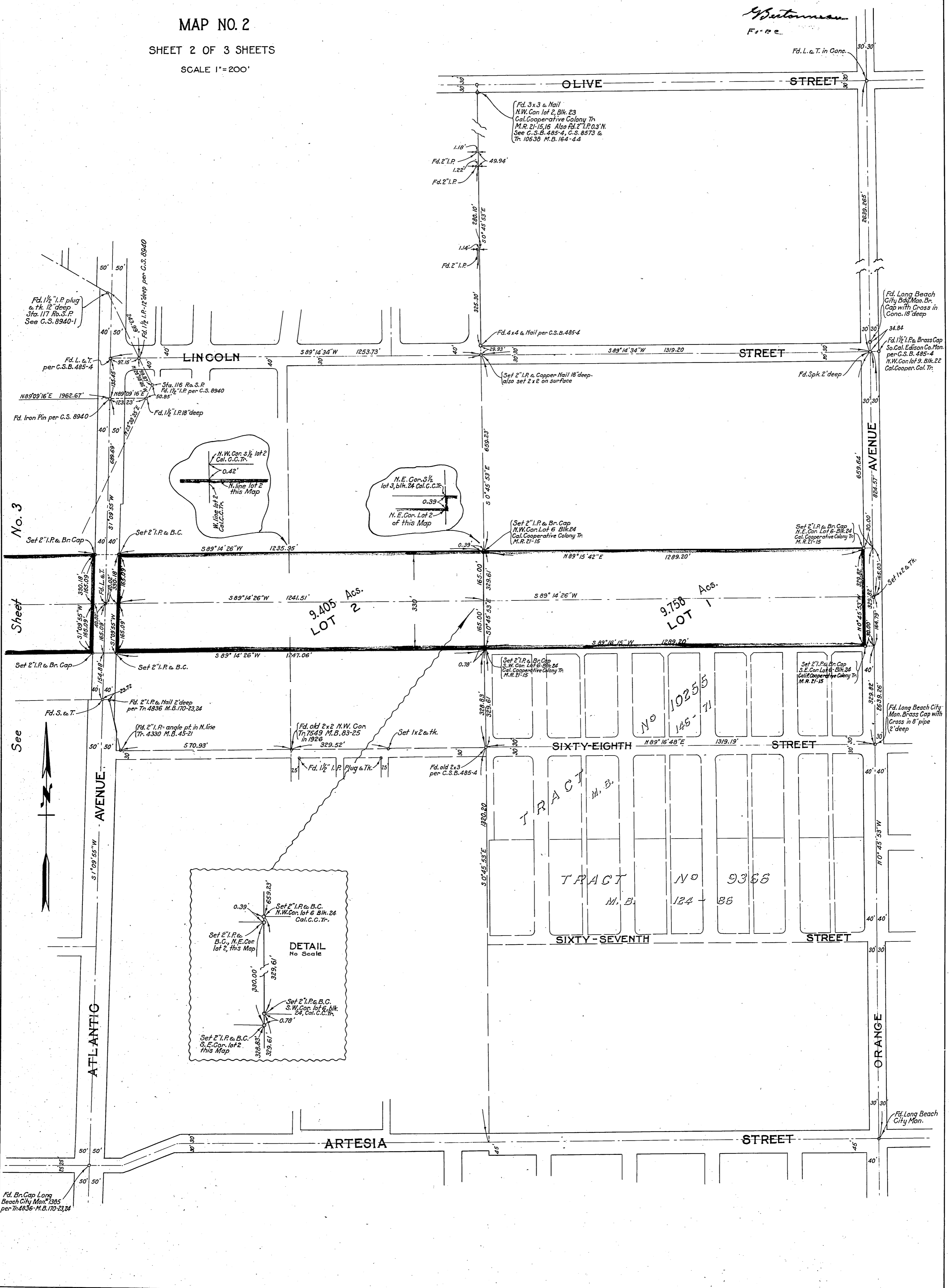
PROPERTY OF
SOUTHERN CALIFORNIA EDISON COMPANY LTD.

MAP NO. 2

SHEET 2 OF 3 SHEETS

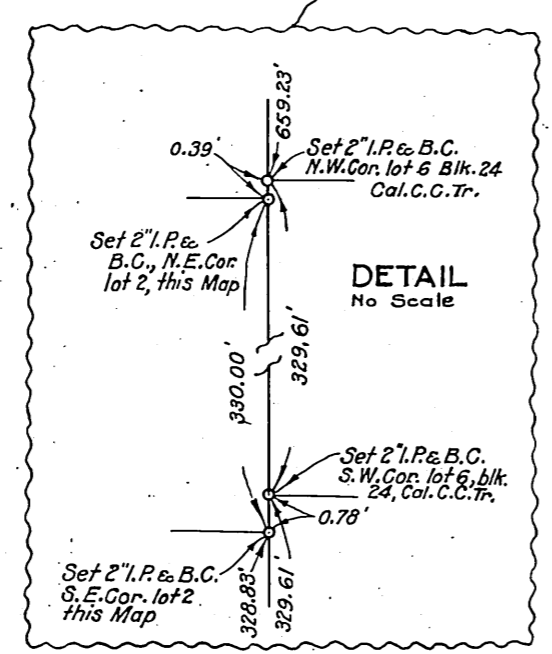
SCALE 1"=200'

W. G. Burtman
FRS



No. 3
Sheet

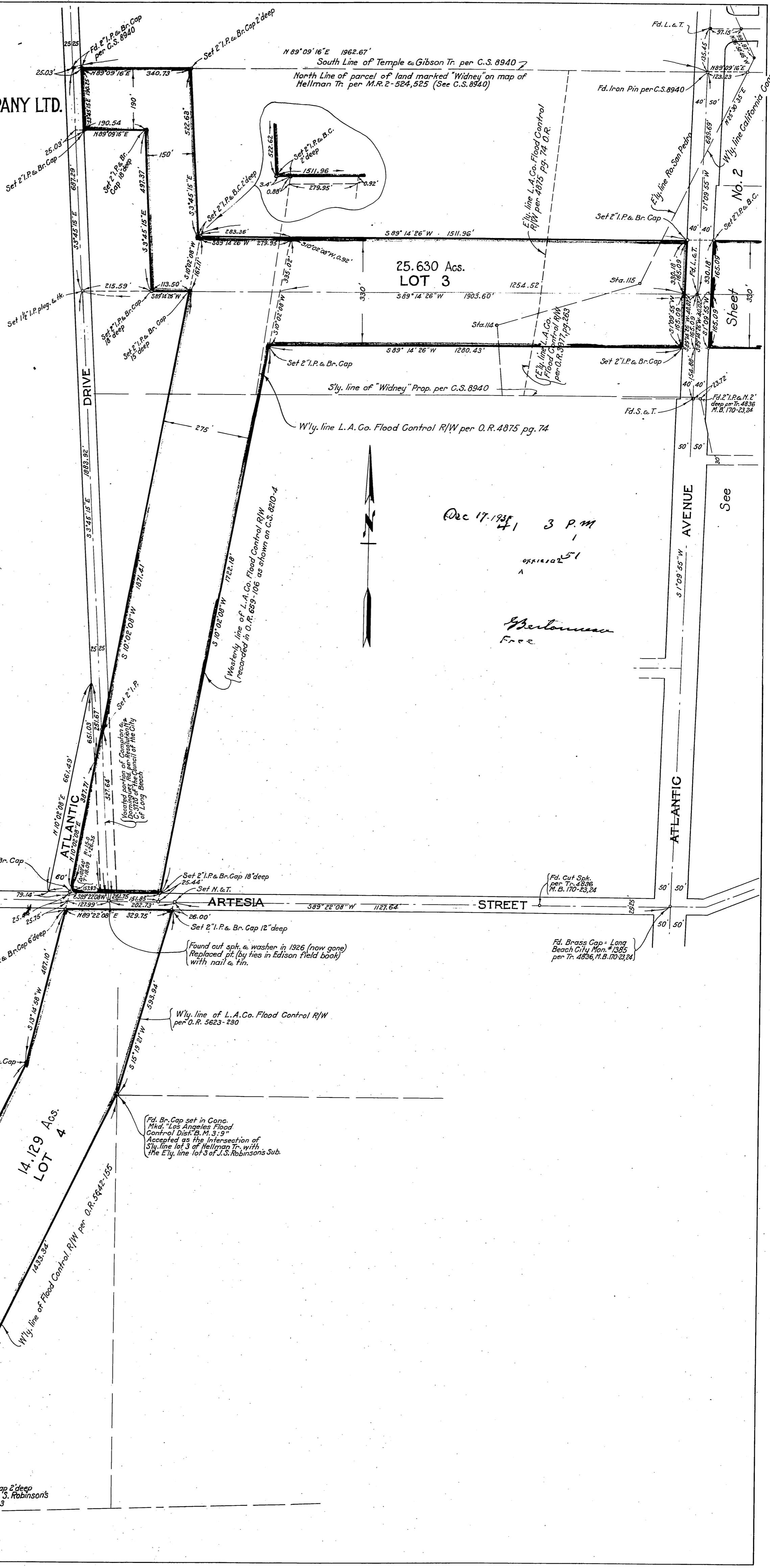
See



Fd. Br. Cap Long Beach City Mon. 1385 per Tr. 4636-M.B. 170-23,24

Fd. Long Beach City Mon. Brass Cap with Gross in 8" pipe 2' deep

PROPERTY OF
SOUTHERN CALIFORNIA EDISON COMPANY LTD.
 MAP NO. 2
 SHEET 3 OF 3 SHEETS
 SCALE 1" = 200'



Dec 17 1945
 41 3 P.M.
 51
 Bertouman
 Free

SCOTT STREET
 Fd. 2\"/>

Wily. line California Cooperative Colony