

PROPERTY OF SOUTHERN CALIFORNIA EDISON COMPANY LTD.

Free

MAP NO. 4

SHEET 1 OF 4 SHEETS

LOCATED PARTLY IN THE CITY OF LONG BEACH AND PARTLY IN THE COUNTY OF LOS ANGELES

Being a Subdivision of Lot 2, Block 9; a portion of Lot 3, Block 9; Lots 4 and 13, Blk. 10; the E'ly. 330 ft. of Lots 1, 2, 3, 4, 5, 6, 7 and 8 and all of Lots 9, 10, 11 and N. 1/2 of Lot 12, Blk. 22 of California Cooperative Colony Tract per M. R. 21, 15 and 16. Also a portion of Lot 376, Blk. 42, all of Lots 398, 414, 415 and 416, Blk. 48 and Lots 435, 436, 437, 438 and 475 to 485 both inclusive in Blk. 54 of Tract 6251 per M.B. 67 pages 7 to 12 inclusive, all records of Los Angeles County.

Los Angeles California February 1932
J. E. Rockhold County Surveyor
Scale 1 Inch = 200 Feet

The bearing of Rosecrans Avenue as shown on Licensed Surveyor's Map 31 page 9 was used as the basis of bearings shown upon this map.

This map was prepared from a survey made under the supervision of Geo. H. Starbuck, Licensed Surveyor and Engineer for the Southern California Edison Company Ltd. during August 1931.

We hereby certify that on the 29th day of Feb, 1932, the within map was approved and adopted as an official map by the Board of Supervisors of the County of Los Angeles by resolution duly adopted, as follows, to-wit:

WHEREAS, the Board of Supervisors of the County of Los Angeles, State of California, pursuant to the provisions of Section 3658a of the Political Code of the State of California, did, by an order adopted on the 7th day of December, 1931, direct the preparation by the County Surveyor of an official map of portions of the property of Southern California Edison Company, Ltd.

NOW THEREFORE, be it resolved that said map entitled "Property of Southern California Edison Company Ltd., Map No. 4" be and the same is hereby approved and adopted.

The foregoing resolution was, on the 29th day of January, 1932, adopted by the Board of Supervisors of the County of Los Angeles, State of California.

ATTEST: L. E. Lampton
County Clerk and ex-officio Clerk
of the Board of Supervisors
of the County of Los Angeles.

By Mame B. Beatty
Deputy

L. E. Lampton
County Clerk and ex-officio Clerk
of the Board of Supervisors
of the County of Los Angeles

By Mame B. Beatty
Deputy

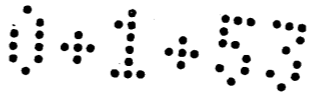
Henry N. Wright
Chairman of the Board of Supervisors
Supervisor 5th District

Hugh A. Hatch
Supervisor 1st District

Frank J. Ryan
Supervisor 2nd District

J. Don Mahaffey
Supervisor 3rd District

John Quinn
Supervisor 4th District



MARCH 3 1932
 1 9 AM
 53
 OF OFFICIAL MAPS

S. Matschke
 Free

MICHIGAN AVENUE

ROSECRANS AVENUE

BOULEVARD

NOT A PART OF THIS SUBDIVISION

LOT 19.410 Acres

MARINO AVENUE

MAPLE AVENUE

SAN MARCUS STREET

SAN LUIS STREET

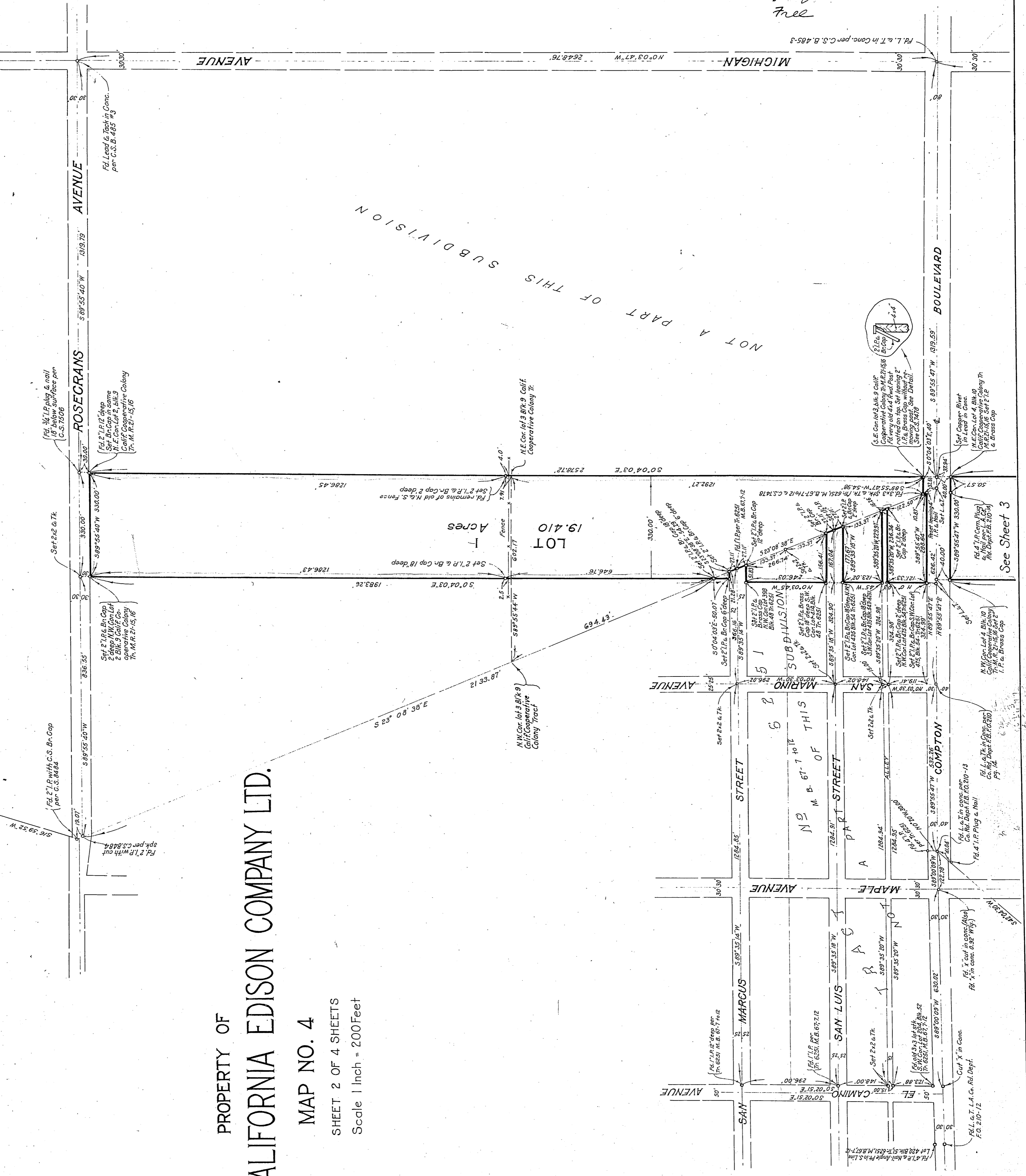
ALLEY

COMPTON AVENUE

SAN CAMINO AVENUE

PROPERTY OF
 SOUTHERN CALIFORNIA EDISON COMPANY LTD.

MAP NO. 4
 SHEET 2 OF 4 SHEETS
 Scale 1 inch = 200 Feet

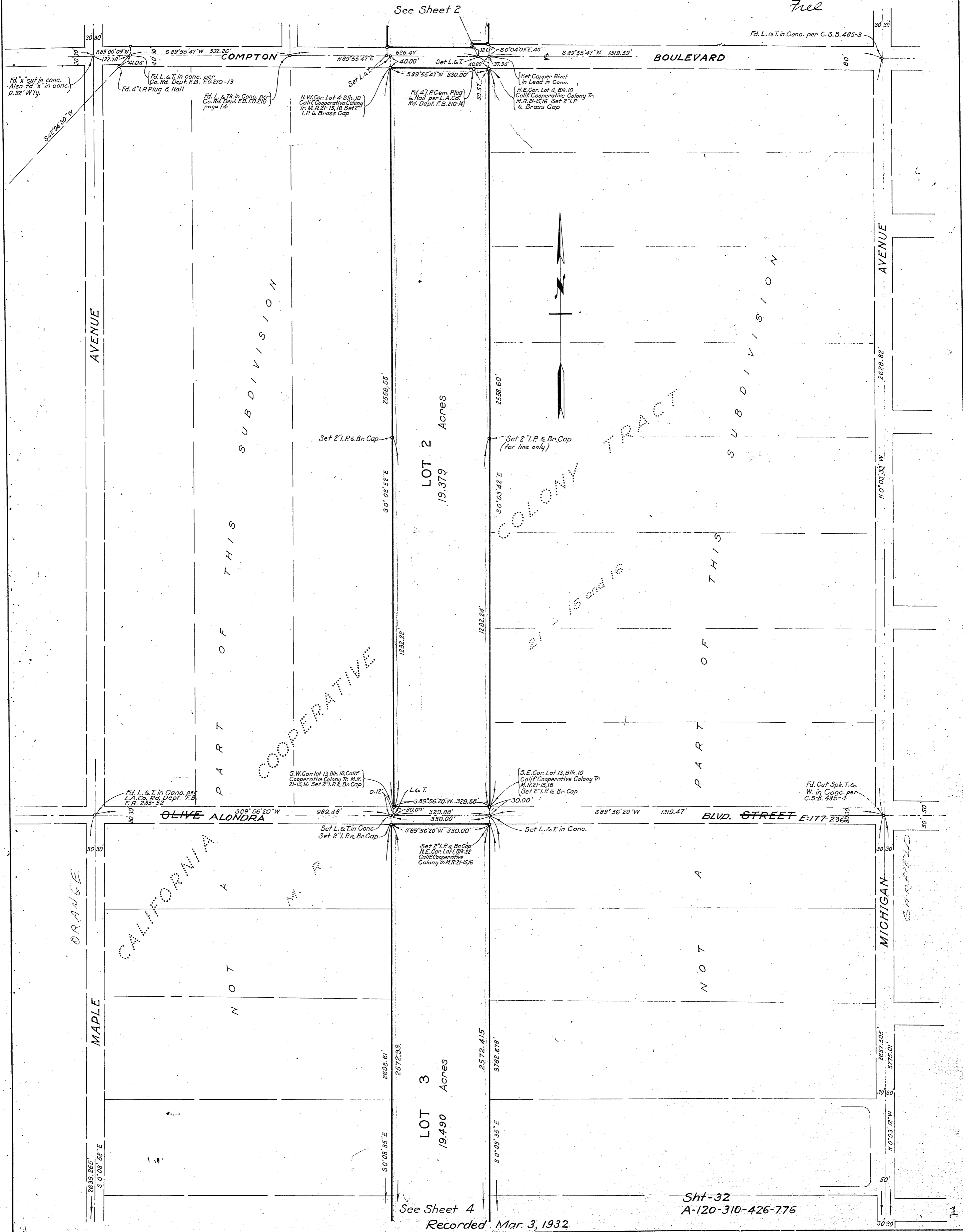


Sht-32
 A-120-310-426-776

PROPERTY OF
SOUTHERN CALIFORNIA EDISON COMPANY LTD.

MAP NO. 4
SHEET 3 OF 4 SHEETS
Scale 1 Inch = 200 Feet

54
MARCH 3 1932
1 9 AM
54
OF OFFICIAL MAPS
G. Metzger
Free



See Sheet 2

Fd. L. & T. in Conc. per C.S.B. 485-3

Fd. 'x' cut in conc. Also fd. 'x' in conc. 0.92' W'y.

Fd. L. & T. in conc. per Co. Rd. Dept. F.B. F.O. 210-13 Fd. 4" I.P. Plug & Nail

Fd. L. & T. in Conc. per Co. Rd. Dept. F.B. F.O. 210 page 14

N.W. Con. Lot 4, Blk. 10 Calif. Cooperative Colony Tr. M.R. 21-15, 16 Set 2" I.P. & Brass Cap

Fd. 4" I.P. Cem. Plug & Nail per L.A. Co. Rd. Dept. F.B. 210-14

Set Copper Rivet in Lead in Conc. N.E. Con. Lot 4, Blk. 10 Calif. Cooperative Colony Tr. M.R. 21-15, 16 Set 2" I.P. & Brass Cap

LOT 2
19.379 Acres

LOT 3
19.490 Acres

See Sheet 4

Sht-32
A-120-310-426-776

Recorded Mar. 3, 1932

ORANGE
MAPLE

CALIFORNIA

COOPERATIVE

COLONY TRACT

21-15 and 16

MICHIGAN
SARFIELD

PART OF THIS
SUBDIVISION

PART OF THIS
SUBDIVISION

AVENUE

AVENUE

OLIVE ALONDRA

BLVD. STREET E-177-236

NOT A

NOT A

2639.265'
S 0° 03' 56" E

2608.61'
S 0° 03' 35" E

2572.415'
S 0° 03' 35" E

1075.235'
N 0° 03' 12" W

505.792'
N 0° 03' 33" W

1075.235'
N 0° 03' 12" W

505.792'
N 0° 03' 33" W

1075.235'
N 0° 03' 12" W

505.792'
N 0° 03' 33" W

1075.235'
N 0° 03' 12" W

505.792'
N 0° 03' 33" W

1075.235'
N 0° 03' 12" W

505.792'
N 0° 03' 33" W

1075.235'
N 0° 03' 12" W

505.792'
N 0° 03' 33" W

1075.235'
N 0° 03' 12" W

505.792'
N 0° 03' 33" W

1075.235'
N 0° 03' 12" W

505.792'
N 0° 03' 33" W

1075.235'
N 0° 03' 12" W

PROPERTY OF
SOUTHERN CALIFORNIA EDISON COMPANY LTD.

MAP NO. 4

SHEET 4 OF 4 SHEETS

Scale 1 Inch = 200 Feet

MARCH 3 1932

1 9 AM

OF OFFICIAL MAPS

See Sheet 3

Almatschke
Free

LOT 3
19.490
Acres

LOT 4
34.437
Acres

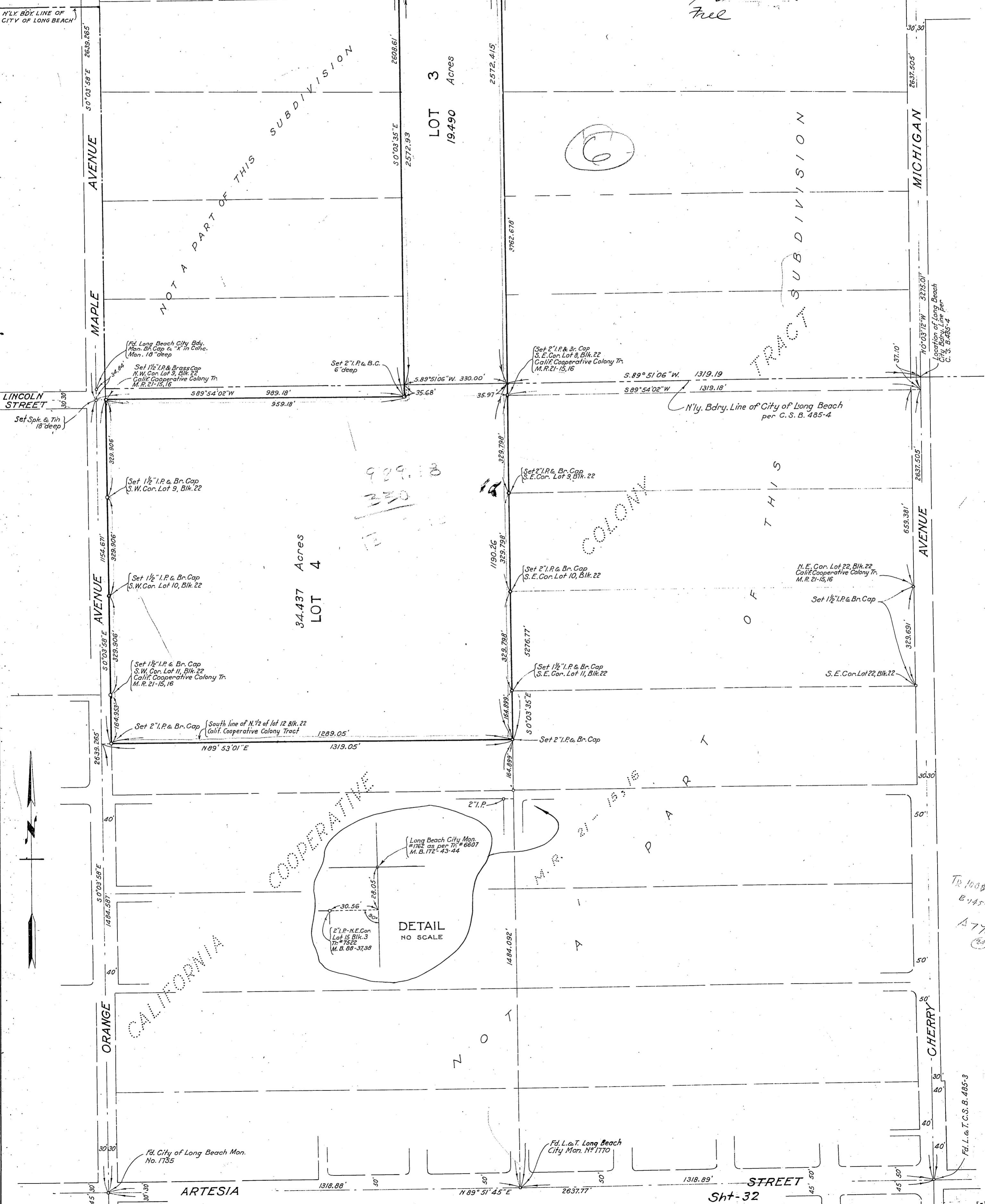
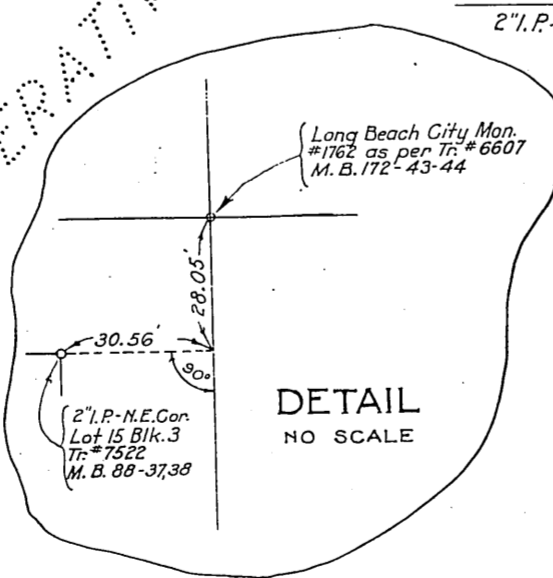
NOT A PART OF THIS
SUBDIVISION

TRACT SUBDIVISION

COLONY

OF THIS

CALIFORNIA



TR 16085
B-145-35
A776

Fd. L. & T. C.S.B. 485-3