

0-1-56

PROPERTY OF SOUTHERN CALIFORNIA EDISON COMPANY LTD.

MAP NO. 3

SHEET 1 OF 4 SHEETS

PARTLY IN THE CITIES OF TORRANCE AND GARDENA AND PARTLY IN THE COUNTY OF LOS ANGELES

Being a subdivision of a portion of lots 51, 58, 66, 73, 83 and 90 of M^cDonald Tract recorded in Book 15 Pages 21 and 22 of Miscellaneous Records, Records of the County of Los Angeles, State of California.

Los Angeles
J. E. Rockhold

California

March 1932
County Surveyor

Scale 1 Inch = 200 Feet

APR 8 1932
35 10 A.M.
56
MRPS

Supervisor

G. B. ... Deputy

For

The bearing of Cypress Avenue as shown on Official Map, Map No. 1, filed in Book... page 47 of Official Maps was used as the basis of bearings shown upon this map.

This map was prepared from a survey made under the supervision of Geo. H. Starbuck, Licensed Surveyor and Engineer for Southern California Edison Company Ltd., between October 1928 and November 1931

We hereby certify that on the 4th day of April 1932, the within map was approved and adopted as an official map by the Board of Supervisors of the County of Los Angeles by resolution duly adopted as follows to-wit:

WHEREAS, the Board of Supervisors of the County of Los Angeles, State of California, pursuant to the provisions of Section 3658 a of the Political Code of the State of California, did, by an order adopted on the 7th day of December 1931, direct the preparation by the County Surveyor of an Official Map of portions of the property of Southern California Edison Company Ltd.

NOW THEREFORE, be it resolved that said map entitled "Property of Southern California Edison Company Ltd. Map No. 3" be and the same is hereby approved and adopted.

The foregoing resolution was, on the 4th day of April 1932, adopted by the Board of Supervisors of the County of Los Angeles, State of California.

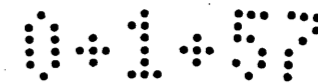
L. E. Lampton
County Clerk and ex-officio
Clerk of the Board of Supervisors
of the County of Los Angeles
by Mame B. Beatty
Deputy

Wm. M. Wright
Supervisor 2nd District

Frank J. Lam
Supervisor 1st District

John Quinn
Supervisor 4th District

ATTEST: L. E. Lampton
County Clerk and ex-officio
Clerk of the Board of Super-
visors of the County of Los Angeles
by Mame B. Beatty
Deputy



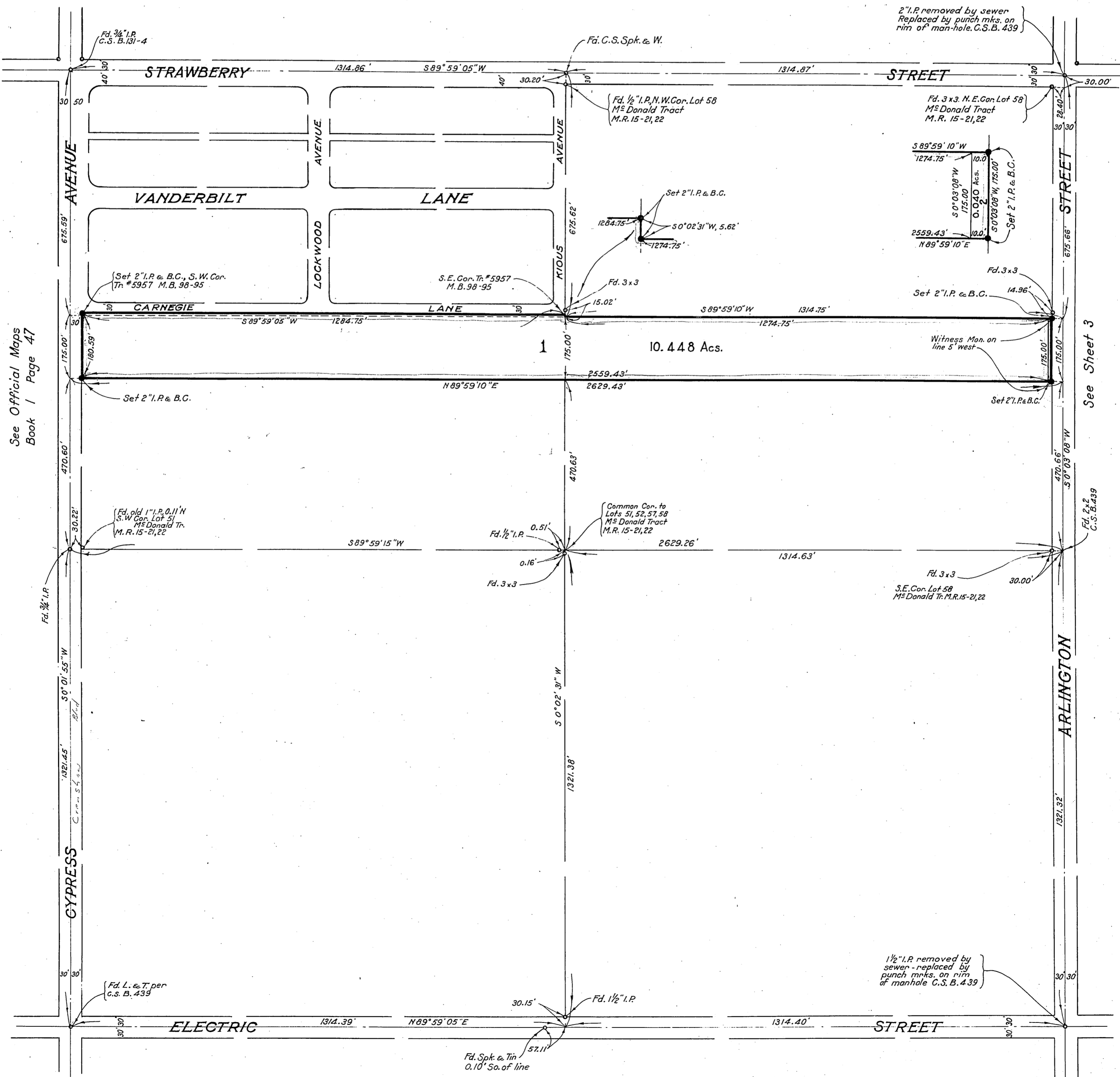
PROPERTY OF SOUTHERN CALIFORNIA EDISON COMPANY LTD.

MAP NO. 3
SHEET 2 OF 4 SHEETS
Scale 1 Inch = 200 Feet

APR 8 1932
35 10 A.M.
57
MAPS

Supervisors

J. Roberto Deputy



See Official Maps
Book 1 Page 47

See Sheet 3



0-1-58

PROPERTY OF SOUTHERN CALIFORNIA EDISON COMPANY LTD.

MAP NO. 3

SHEET 3 OF 4 SHEETS

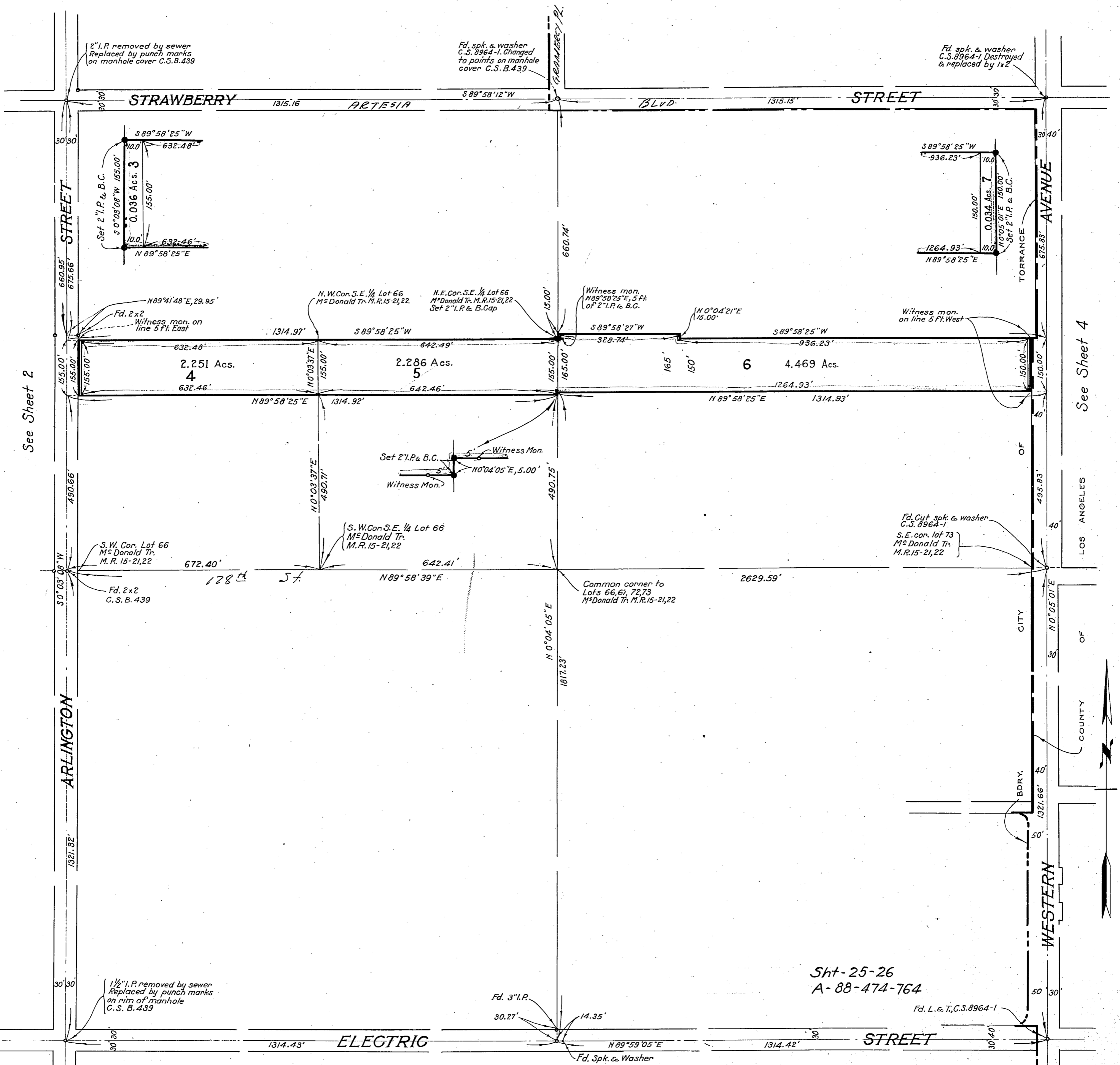
Scale 1 Inch = 200 Feet

APR 8 1932
35 10 AM
58
MAPS

Supervisor's Office

J.B. Roberts
Deputy

FREE



See Sheet 2

See Sheet 4

LOS ANGELES

CITY OF

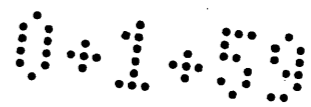
BDRY. OF

COUNTY OF

WESTERN

Sht-25-26
A-88-474-764

Note: Set 2" I.P. & B.C. = 2" Iron Pipe and Southern California Edison Company Ltd. Brass Cap set approximately 8" to 12" below surface.
Recorded Apr. 8, 1932



PROPERTY OF SOUTHERN CALIFORNIA EDISON COMPANY LTD.

MAP NO. 3

SHEET 4 OF 4 SHEETS

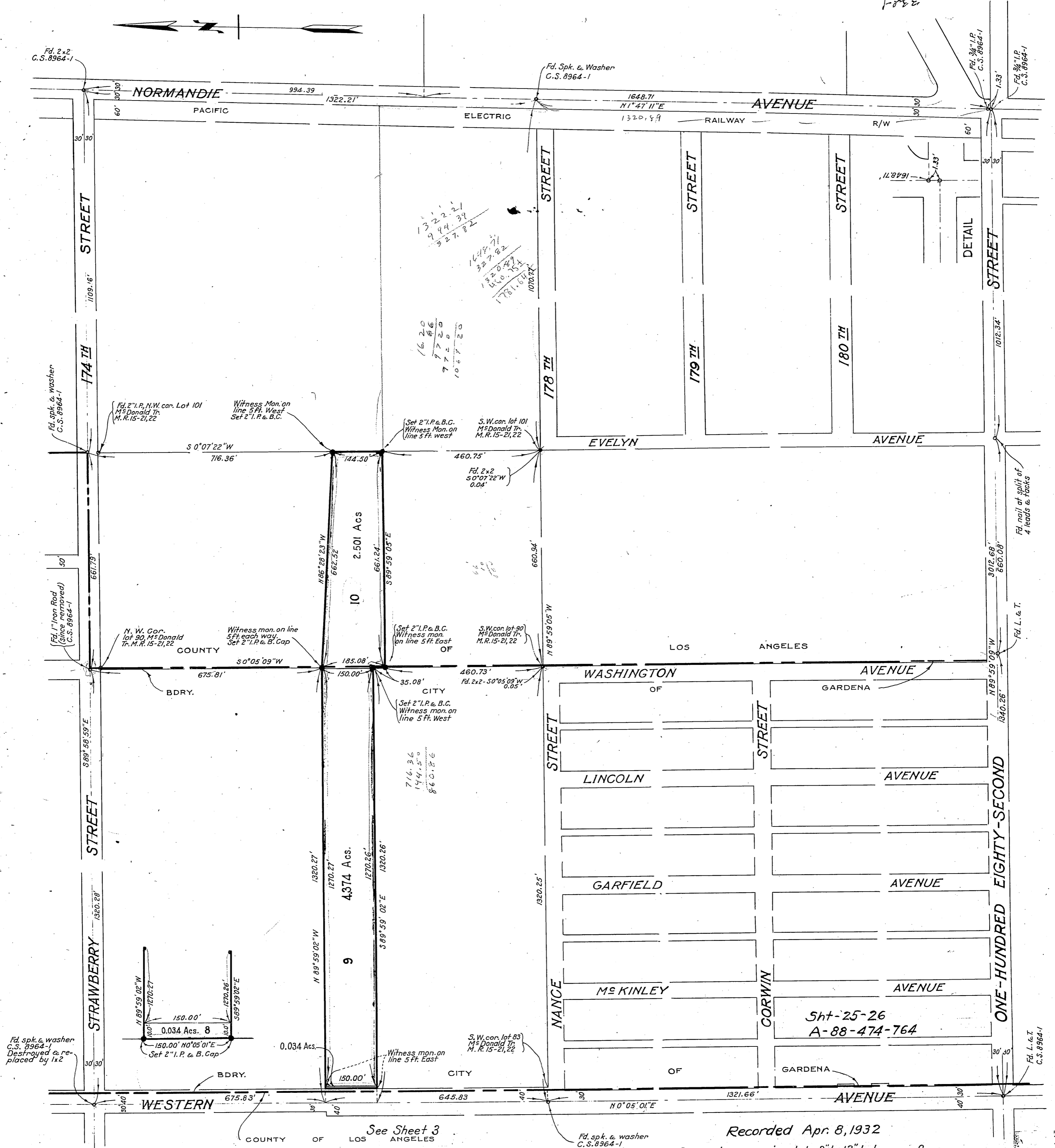
Scale 1 Inch = 200 Feet

APR 8 1932
35 10 A.M.
1
59
OF OFFICIAL MAPS

Supervisors

J. R. Roberts
Deputy

Free



Note: Set 2" I.P. & B.C. = 2" Iron Pipe and Southern California Edison Company Ltd. Brass Cap set approximately 8" to 12" below surface.

See Sheet 3

Recorded Apr. 8, 1932