

PROPERTY OF SOUTHERN CALIFORNIA EDISON COMPANY LTD.

Dec 8-1932
42 10 AM
67

MAP N^o 5

SHEET 1 OF 5 SHEETS

E. J. Halladay
612

IN THE CITY OF GLENDALE AND IN THE COUNTY OF LOS ANGELES

Being a subdivision of a portion of lot 8 of Will W. Beach's Home Place, recorded in Miscellaneous Records Book 39 Page 100; a portion of lots 7, 8, 9, 10 and 11 Journeys End Tract, recorded in Map Book 28 Page 8; a portion of lots 1, 2, 3, and 4 of "Altacanyada", recorded in Map Book 30 Page 83; a portion of lots 1 to 9 inclusive of Dunham's Subdivision, recorded in Miscellaneous Records Book 43 page 19; a portion of lots 50 to 55 inclusive, Block D; lots 56 to 60 inclusive Block E; lots 61 to 65 inclusive, Block F of the Town of La Canada recorded in Miscellaneous Records Book 21 page 52; a portion of lot 18 of Subdivision of Rancho La Cañada recorded in Miscellaneous Records Book 4 page 351; a portion of lot 95 of Watts Subdivision recorded in Miscellaneous Records Book 5 pages 328 and 329; a portion of lot 4 Tract N^o 919 recorded in Map Book 18 page 78; a portion of lots 1, 2 and 3 Verdugo Estate recorded in Map Book 12 pages 34 & 35; and a portion of lots A and B Sicomoro Cañon Tract recorded in Map Book 30 page 37. Records of Los Angeles County.

Los Angeles California June 1932
J. E. Rockhold County Surveyor
Scale 1 Inch = 200 Feet

The bearing S. 49° 27' 30" E. of New York Avenue as shown on map of Tract N^o 2123 recorded in Map Book 22 pages 194 and 195, was used as the basis of bearings shown upon this map. This base of bearings was carried into the survey delineated upon this map by triangulation.

This map was prepared from a survey made under the supervision of Geo. H. Starbuck, Licensed Surveyor and Engineer for the Southern California Edison Company Ltd., between 1922 & 1932

We hereby certify that on the 25th day of November 1932, the within map was approved and adopted as an official map by the Board of Supervisors of the County of Los Angeles by resolution duly adopted, as follows, to-wit:
"WHEREAS, the Board of Supervisors of the County of Los Angeles, State of California, pursuant to the provisions of Section 3658a of the Political Code of the State of California, did by an order adopted on the 7th day of December 1931, direct the preparation by the County Surveyor of an official map of portions of the property of Southern California Edison Company Ltd.

NOW THEREFORE, be it resolved that said map entitled "Property of Southern California Edison Company Ltd., Map No. 5" be and the same is hereby approved and adopted.

The foregoing resolution was, on the 25th day of November 1932, adopted by the Board of Supervisors of the County of Los Angeles, State of California.

ATTEST: L. E. Lampton
County Clerk and ex-officio Clerk of the Board of Supervisors of the County of Los Angeles.

By [Signature] Deputy
[Signature]
Chairman of the Board of Supervisors
Supervisor 5th District.

L. E. Lampton
County Clerk and ex-officio Clerk of the Board of Supervisors of the County of Los Angeles.

By [Signature] Deputy

[Signature]
Supervisor 1st District.

[Signature]
Supervisor 2nd District.

[Signature]
Supervisor 3rd District.

[Signature]
Supervisor 4th District.

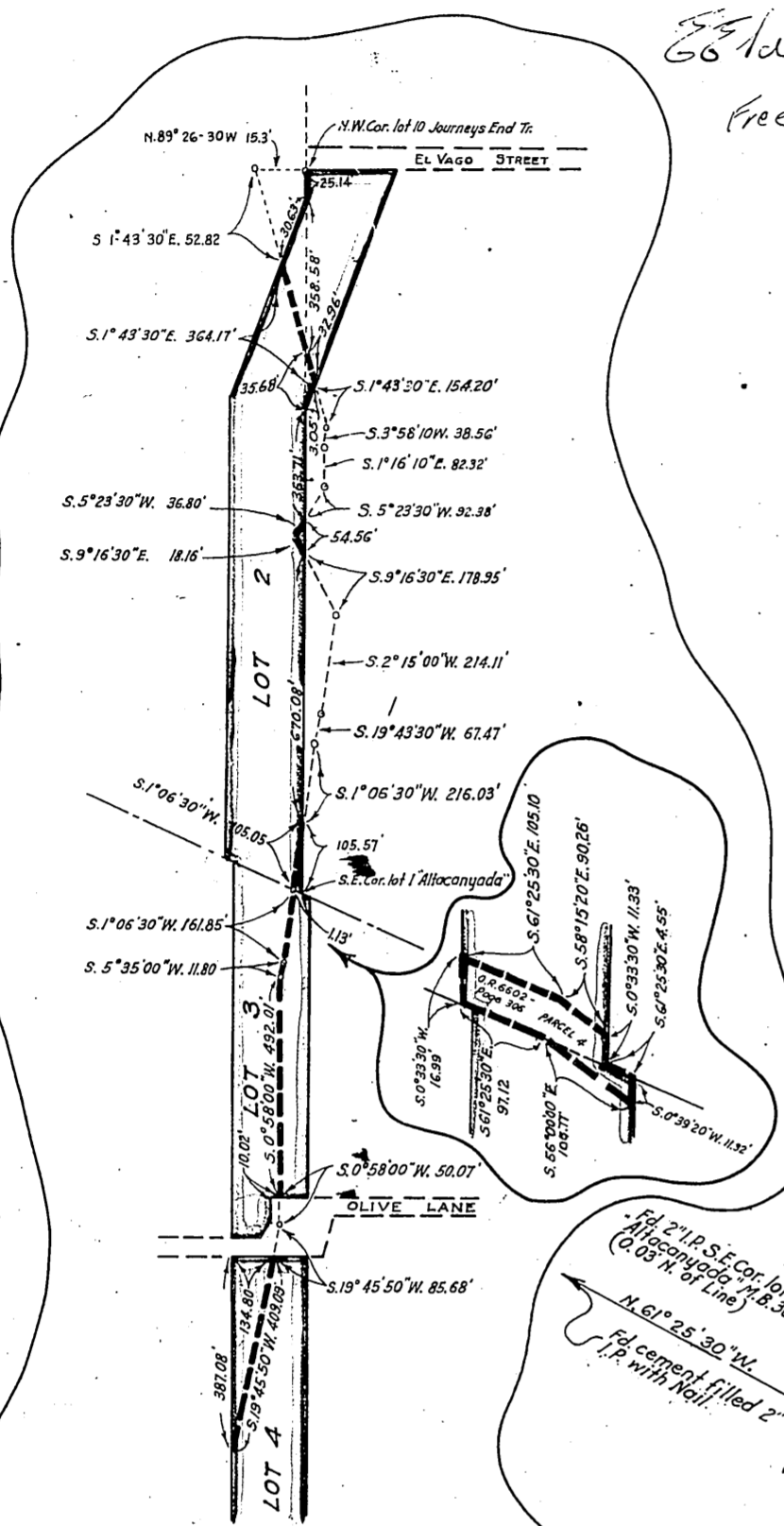
Sht-41-51
A-70-370-719-777-789

PROPERTY OF
SOUTHERN CALIFORNIA EDISON COMPANY LTD.

MAP No 5
SHEET 2 OF 5 SHEETS
SCALE 1" = 200'

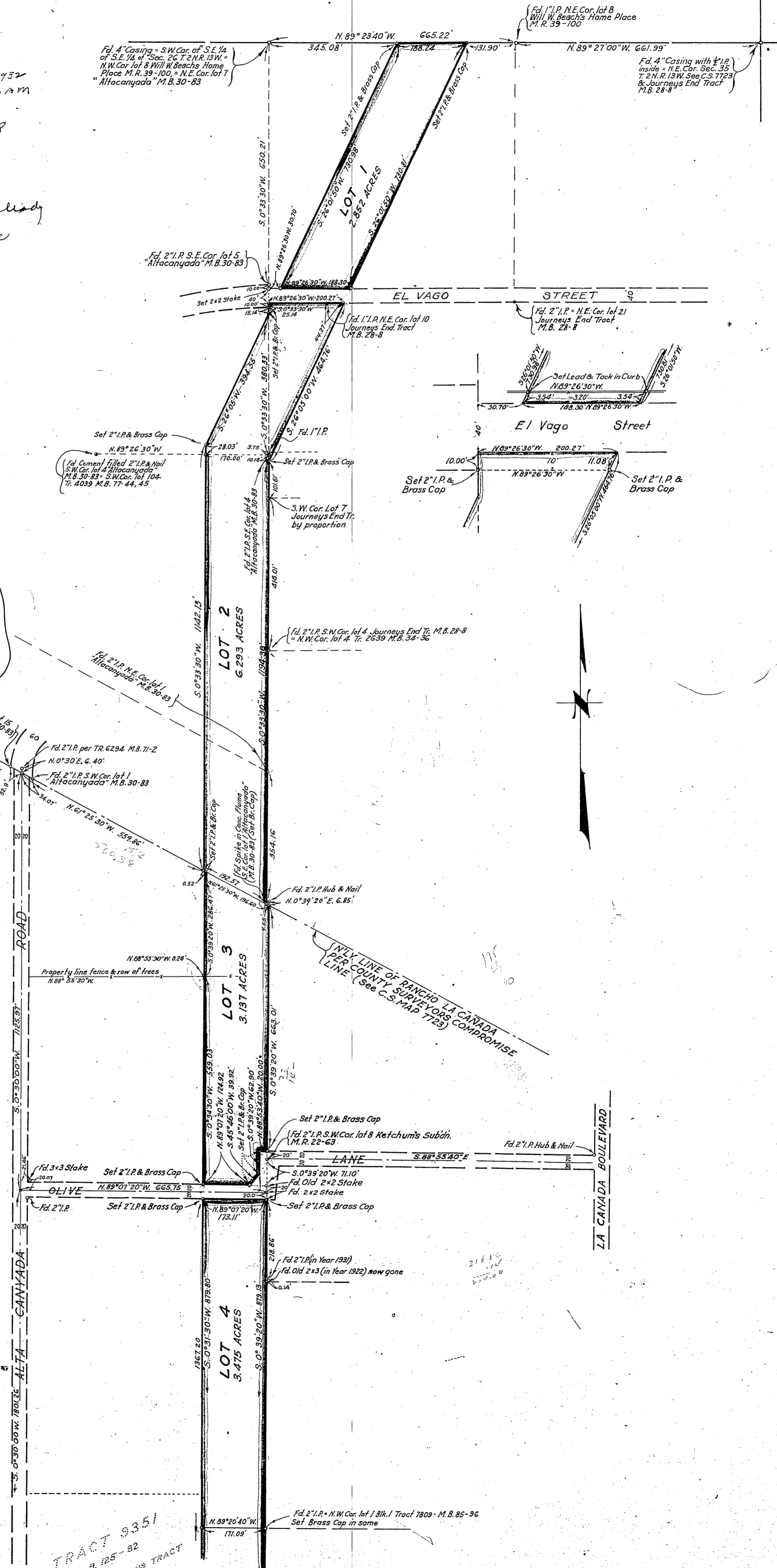
Dec 8-1932
10 AM
168

El Vago
free



DETAIL
Not to Scale

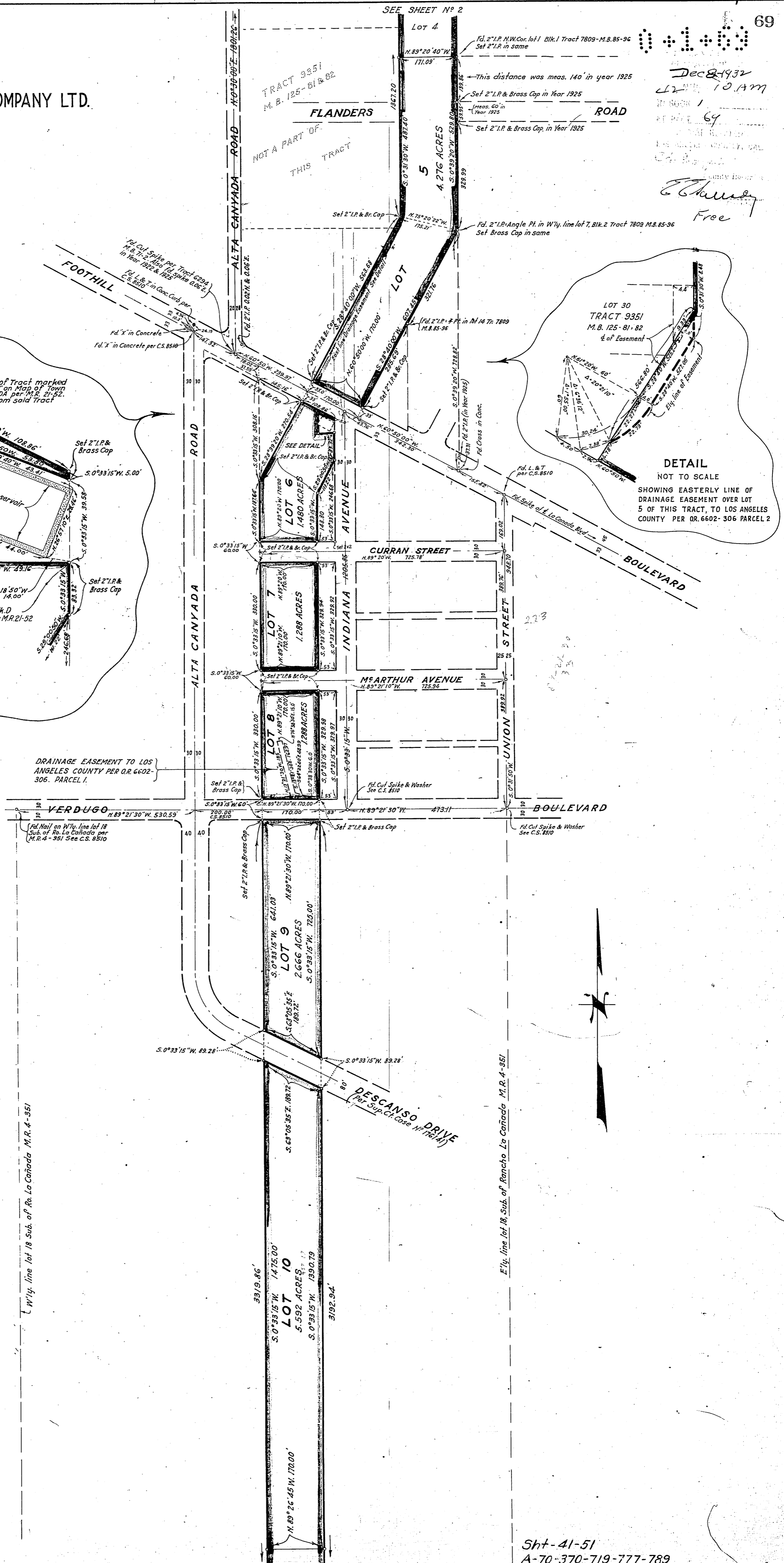
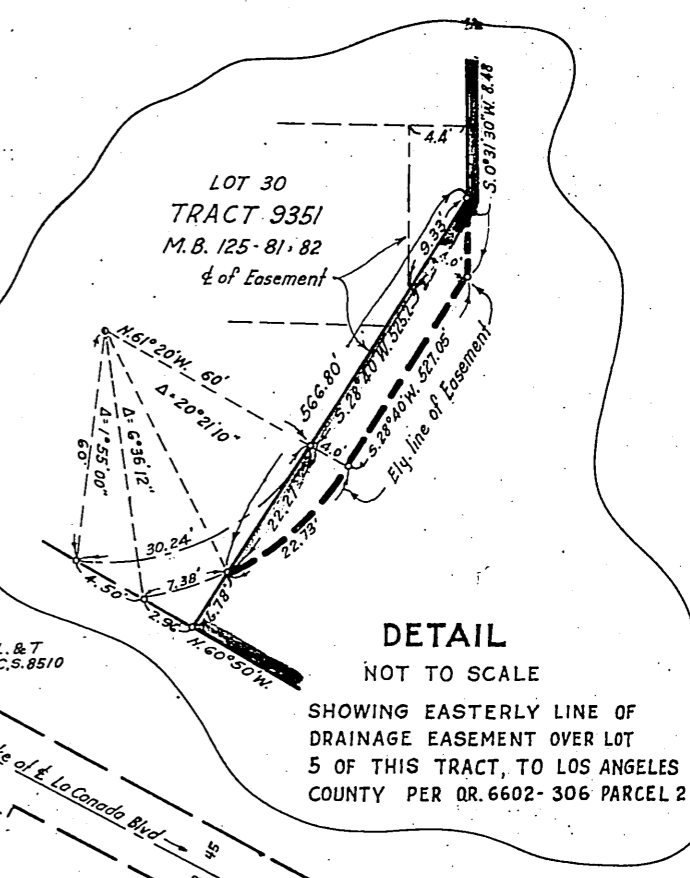
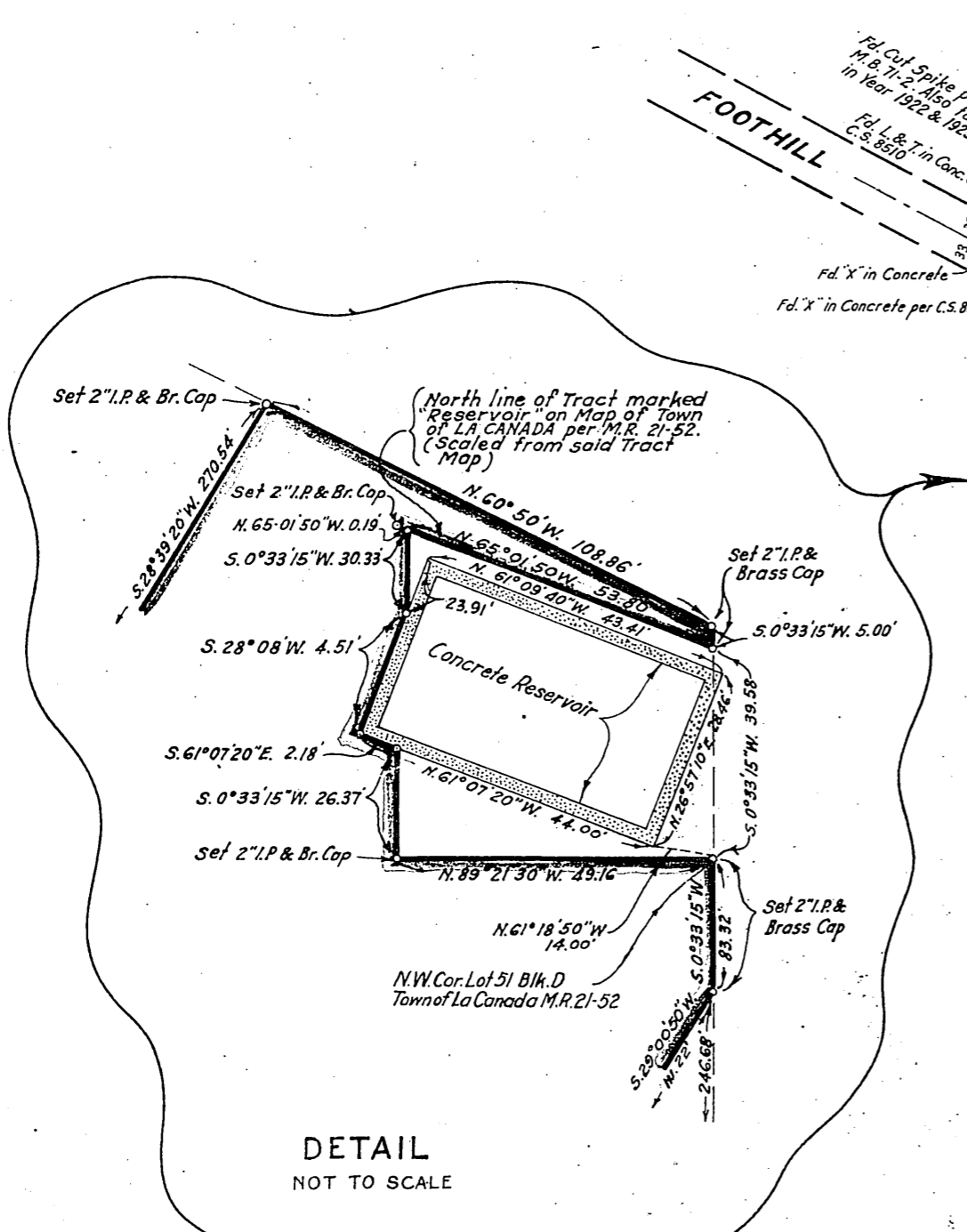
Showing $\frac{1}{2}$ of Drainage Easement, 15' wide, to Los Angeles County over lots 2, 3 & 4 of this tract, per O.R. 6602-306 (Parcels 3 & 4) C.S. B 204



PROPERTY OF
SOUTHERN CALIFORNIA EDISON COMPANY LTD.

MAP NO 5
SHEET 3 OF 5 SHEETS
SCALE 1" = 200'

Dec 8 1932
10 AM
Free



Dec 8-1931
4 10 AM
To

E. E. Murray

PROPERTY OF
SOUTHERN CALIFORNIA EDISON COMPANY LTD.

MAP N° 5
SHEET 4 OF 5 SHEETS
SCALE 1" = 200'

