

0-1-72

PROPERTY OF SOUTHERN CALIFORNIA EDISON COMPANY LTD.

MAP NO. 6

SHEET 1 OF 4 SHEETS

*Separate sheets
Dec 12-1-32
31 9 AM
72*

*to the lady
Free*

PARTLY IN THE CITY OF LOS ANGELES AND PARTLY IN THE COUNTY OF LOS ANGELES

Being a subdivision of a portion of Lot 1 of Tract No. 1909 recorded in book 22 pages 50 and 51 of Maps; a portion of Lot 1 of Part of San Pedro Rancho recorded in book 59 pages 15 and 16 of Miscellaneous Records; a portion of Lot 25 of Stimson Bro's. Resubdivision of Farm Lots 18 and 19 South Gardena Tract recorded in book 52 page 98 of Miscellaneous Records; portions of Lots 6, 12 and 15 of South Gardena Tract recorded in book 43 page 39 of Miscellaneous Records; and a portion of the Rancho San Pedro as described in Partition referred to in Superior Court Case No. 939. Records of the County of Los Angeles, State of California.

Los Angeles
J. E. Rockhold

California

March 1932
County Surveyor

Scale 1 Inch = 200 Feet

The bearing on the line adopted as the north line of Partition referred to in Superior Court Case No. 939, as shown on County Surveyor's Map No. 8940 sheet 3 was used as the basis of bearings shown upon this map.

This map was prepared from a survey made under the supervision of Geo. H. Starbuck, Licensed Surveyor and Engineer for the Southern California Edison Company Ltd. between October 1928 and November 1931.

We hereby certify that on the 5th day of December 1932, the within map was approved and adopted as an official map by the Board of Supervisors of the County of Los Angeles by resolution duly adopted, as follows, to wit:

WHEREAS, The Board of Supervisors of the County of Los Angeles, State of California, pursuant to the provisions of Section 3658a of the Political Code of the State of California, did, by an order adopted on the 7th day of December 1931, direct the preparation by the County Surveyor of an Official Map of a portion of the property of Southern California Edison Company Ltd.

NOW THEREFORE be it resolved that said map entitled "Property of Southern California Edison Company Ltd. Map No. 6." be and the same is hereby approved and adopted.

The foregoing resolution was, on the 5th day of December 1932, adopted by the Board of Supervisors of the County of Los Angeles, State of California.

ATTEST: L. E. Lampton
County Clerk and ex-officio Clerk of the Board of Supervisors of the County of Los Angeles.

by Marion K. ... Deputy

Henry W. Knight
Chairman of the Board of Supervisors
Supervisor 6th District

Hugh A. Hatch
Supervisor 1st District

Frank A. ...
Supervisor 2nd District

W. M. ...
Supervisor 3rd District

John ...
Supervisor 4th District

L. E. Lampton
County Clerk and ex-officio Clerk of the Board of Supervisors of the County of Los Angeles

by _____ Deputy

0+1+73

PROPERTY OF

SOUTHERN CALIFORNIA EDISON COMPANY LTD.

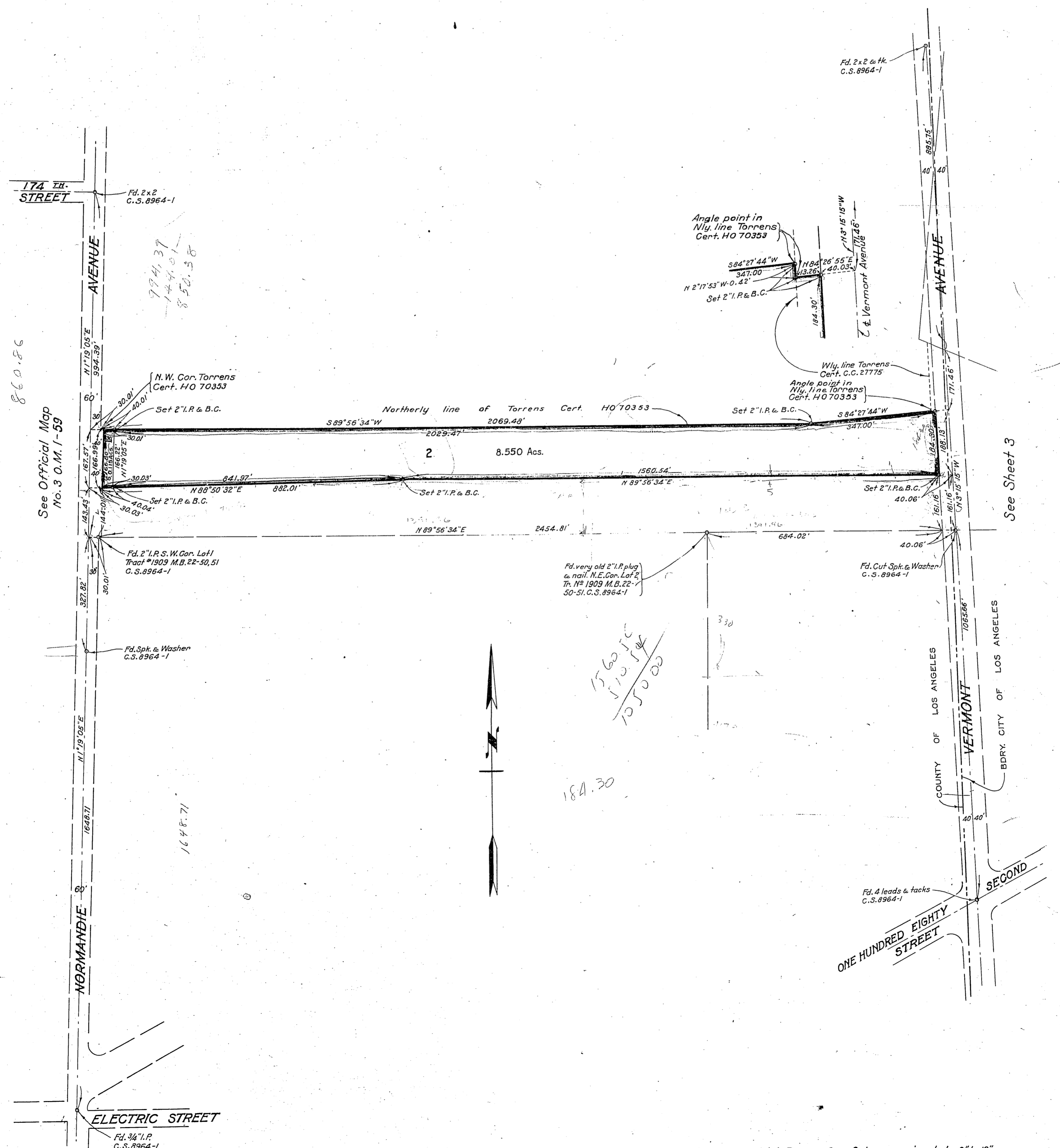
MAP NO. 6

SHEET 2 OF 4 SHEETS

Scale 1 Inch = 200 Feet

Supervisor
Dec. 3-1932
31 9 AM
1/8

W. Melody
Free



See Official Map
No. 3 O.M. 1-59

See Sheet 3



1560 JIC
110.14
105000

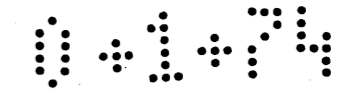
184.30

Note :- Set 2" I.P. & B.C. = Set 2" Iron Pipe and Southern California Edison Company Ltd. Brass Cap. Set approximately 8" to 12" below surface.

Recorded Dec. 13, 1932

Sh-26
A-89-264-474

PROPERTY OF SOUTHERN CALIFORNIA EDISON COMPANY LTD.



PROPERTY OF

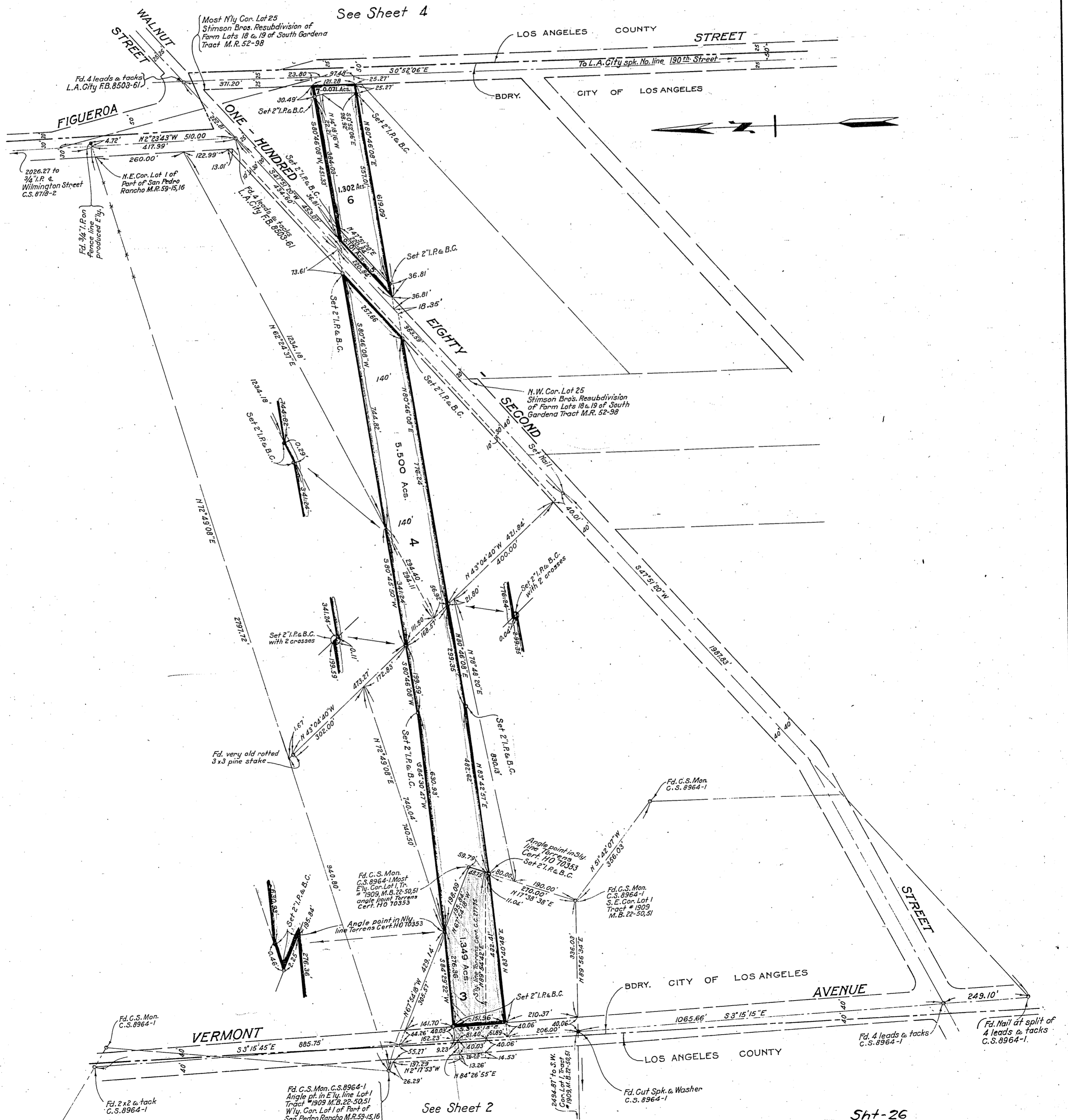
MAP NO. 6

SHEET 3 OF 4 SHEETS

Scale 1 Inch = 200 Feet

RECORD
Supervisor
Dec 13 1932
31 9 AM
74

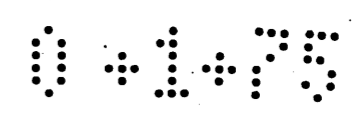
E. E. Callady
Free



Note: -Set 2" I.P. & B.C. = 2" Iron Pipe and Southern California Edison Company Ltd. Brass Cap. Set approximately 8" to 12" below surface

Recorded Dec. 13, 1932

Sht-26
A-89-264-474



PROPERTY OF

SOUTHERN CALIFORNIA EDISON COMPANY LTD.

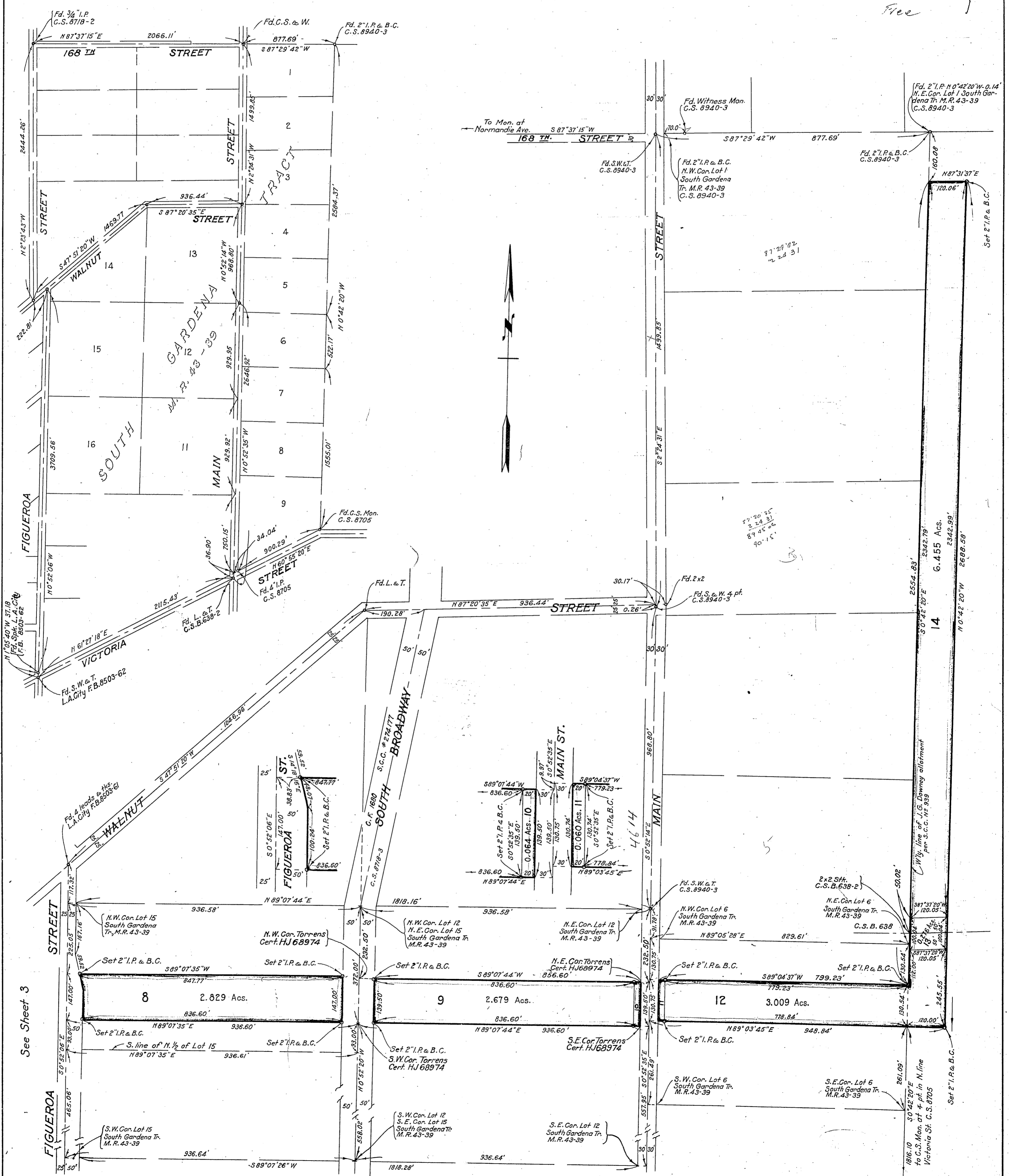
MAP NO. 6

SHEET 4 OF 4 SHEETS

Scale 1 Inch = 200 Feet

Dec 13-1932
31 9 AM
74

E. Halladay
Free



See Sheet 3

Note :- Set 2" I.P. & B.C. - Set 2" Iron Pipe and Southern California Edison Company Ltd. Brass Cap, set approximately 8" to 12" below surface. Sht-26 A-89-264-474
 Recorded Dec. 13, 1932