

# OFFICIAL MAP OF THE COUNTY OF LOS ANGELES REGION 37

## DIVISION 5

IN THE CITY OF LOS ANGELES

BEING A PLAT OF A PORTION OF LOT 22, RANCHO SAN JOSE DE BUENOS AYRES AS SHOWN ON MAP RECORDED IN BOOK 52 PAGES 9 TO 12 OF MISCELLANEOUS RECORDS, PORTIONS OF BLOCKS 7, 8, 15, 16, 24, 25, 33, 34, AND 40 OF SANTA MONICA LAND AND WATER CO. TRACT, AS SHOWN ON MAP RECORDED IN BOOK 78 PAGES 44 TO 49 INCL. OF MISCELLANEOUS RECORDS, RECORDS OF THE COUNTY OF LOS ANGELES; ALSO THOSE PORTIONS OF SEPULVEDA BOULEVARD AS VACATED BY ORDINANCE NOS. 70544 AND 67537 OF THE CITY OF LOS ANGELES.

Los Angeles  
J.E. Rockhold

California

December 1933  
County Surveyor

*This map was prepared from surveys made by the Engineering Department of the Los Angeles Mountain Park Co., from recorded deeds and from the Los Angeles County Assessor's records.*

*Bearings are based on County Surveyor's map No. 5355.*

*We hereby certify that on the 19<sup>th</sup> day of Feb., 1934, the within map was approved and adopted as an official map by the Board of Supervisors of the County of Los Angeles by resolution duly adopted, as follows, to-wit:*

*"WHEREAS, the Board of Supervisors of the County of Los Angeles, State of California, pursuant to the provisions of Section 3658a of the Political Code of the State of California, did, by an order adopted on the 18<sup>th</sup> day of November, 1932, direct the preparation by the County Surveyor of an official map of property of the Los Angeles Mountain Park Co.*

*NOW THEREFORE be it resolved that this map entitled "Official Map of the County of Los Angeles, Region 37, Division 5," be and the same is hereby approved and adopted.*

*The foregoing resolution was on the 19<sup>th</sup> day of Feb., 1934, adopted by the Board of Supervisors of the County of Los Angeles, State of California.*

ATTEST: L.E. LAMPTON

*County Clerk and ex-officio Clerk  
of the Board of Supervisors of the  
County of Los Angeles*

By: Mamie B. Beatty Deputy

John R. Quinn  
*Chairman of the Board of Supervisors  
Supervisor 4<sup>th</sup> District*

Hugh A. Thatcher  
*Supervisor 1<sup>st</sup> District*

Roger Jessup  
*Supervisor 5<sup>th</sup> District*

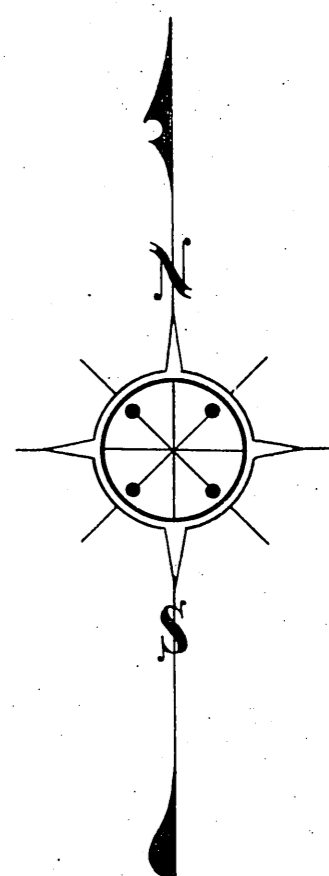
H. M. Baine  
*Supervisor 3<sup>rd</sup> District*

Gordon L. Mc Donough  
*Supervisor 2<sup>nd</sup> District*

L.E. LAMPTON  
*County Clerk and ex-officio Clerk  
of the Board of Supervisors of the  
County of Los Angeles.*

By: Mamie B. Beatty Deputy

# OFFICIAL MAP OF THE COUNTY OF LOS ANGELES REGION 37 DIVISION 5



SCALE 1" = 300'

SEE SHEET 3

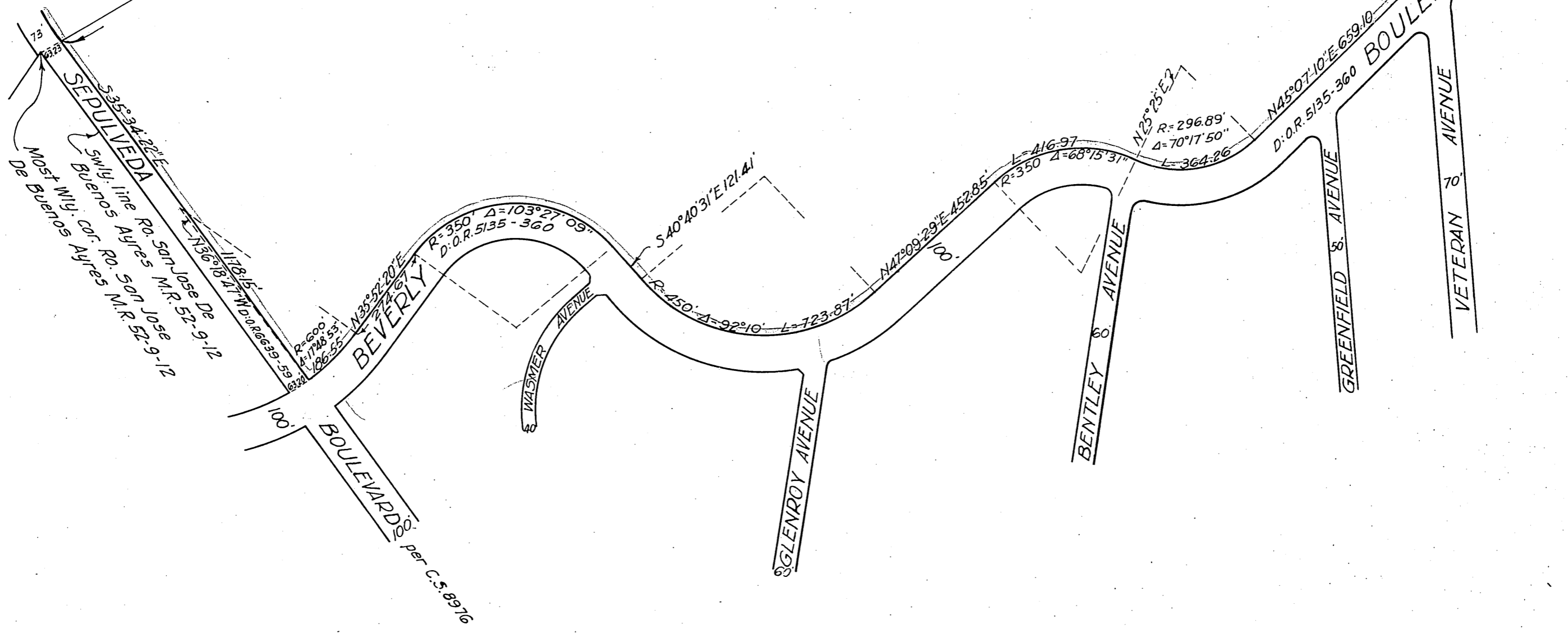
SE. LINE RANCHO SAN VICENTE Y SANTA MONICA. MR 78-44 et seq

TRACT NO. 9746  
MB. 147-34, 35

TRACT NO. 9314 MB. 136-17, 18  
MB. 136-23, 24  
MB. 136-25, 26

12  
116.05 AC.

Lot A  
Tract No. 9756  
MB. 136-20, 21  
per C.S. 8662-100  
Sht. 1

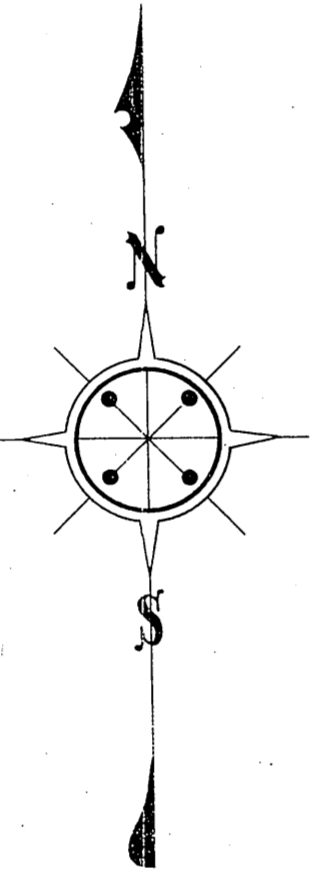
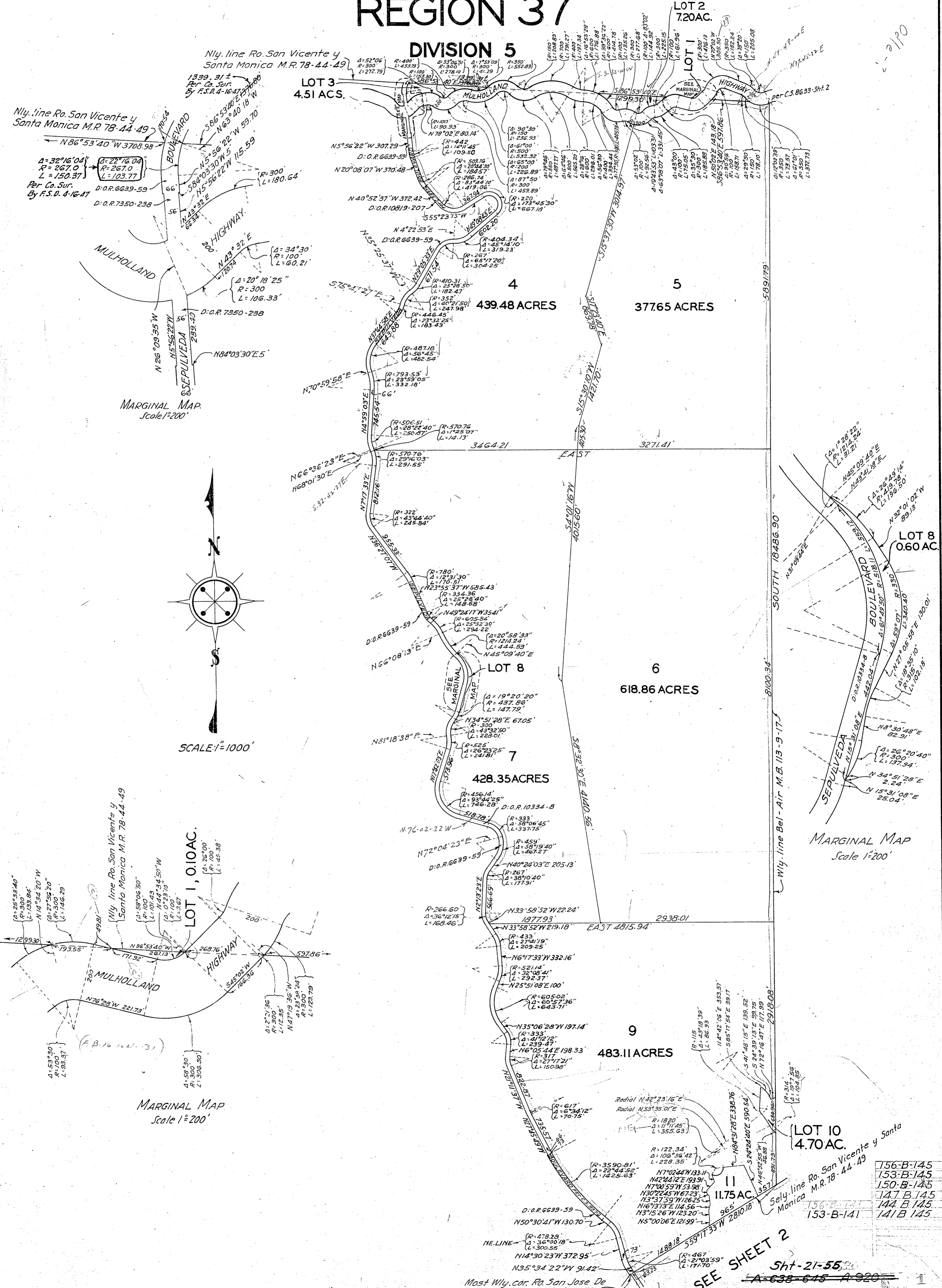


141 B145

Sht-21-55  
~~A-638-645~~

# OFFICIAL MAP OF THE COUNTY OF LOS ANGELES REGION 37

## DIVISION 5



MARGINAL MAP  
Scale 1"=200'

MARGINAL MAP  
Scale 1"=200'

MARGINAL MAP  
Scale 1"=200'

Filed Feb. 23, 1934

Most Wly. cor. Ra. San Jose De Buenos Ayres M.R. 52-9-12

SEE SHEET 2  
Sht-21-55  
A-638-645 A-920

- 156-B-145
- 153-B-145
- 150-B-145
- 147-B-145
- 144-B-145
- 141-B-145