

# OFFICIAL MAP OF THE COUNTY OF LOS ANGELES REGION 39

## DIVISION 329

IN THE CITY OF LOS ANGELES

BEING A SUBDIVISION OF LOTS 1 TO 6 INCLUSIVE, OF THE COURT HOUSE BLOCK, AS SHOWN ON MAP RECORDED IN BOOK 84, PAGES 71 & 72 OF MISCELLANEOUS RECORDS OF THE COUNTY OF LOS ANGELES, STATE OF CALIFORNIA; PORTIONS OF THE CITY LANDS OF LOS ANGELES, AS SHOWN ON MAP RECORDED IN BOOK 2, PAGES 38 & 39 OF PATENTS, RECORDS OF SAID COUNTY; A PORTION OF THE PHILLIPS BLOCK AND LOT IN REAR THEREOF, AS SHOWN ON MAP RECORDED IN BOOK 66, PAGE 69 OF SAID MISCELLANEOUS RECORDS; A PORTION OF THAT CERTAIN PARCEL OF LAND MARKED "BUMILLER" ON MAP RECORDED IN BOOK 66, PAGE 70 OF SAID MISCELLANEOUS RECORDS; AND THOSE PORTIONS OF COURT STREET AND NEW HIGH STREET VACATED BY ORDINANCE N<sup>o</sup> 73377 OF THE CITY OF LOS ANGELES.

Los Angeles  
J. E. Rockhold

California

February 1934  
County Surveyor

*This map was prepared from a Survey made under the supervision of the County Surveyor in September 1932.*

*The bearing of the northwesterly line of Spring Street, N 37° 47' 50" E as shown on map filed in Case N<sup>o</sup> 287163 of the Superior Court of the State of California, in and for the County of Los Angeles, (C.F. Map N<sup>o</sup> 1717) was used as the basis for the bearings shown on this map.*

*We hereby certify that on the 19<sup>th</sup> day of Feb., 1934, the within map was approved and adopted as an official map by the Board of Supervisors of the County of Los Angeles by resolution duly adopted, as follows, to-wit:*

*"WHEREAS, the Board of Supervisors of the County of Los Angeles, State of California, pursuant to the provisions of Section 3658a of the Political Code of the State of California, did, by an order adopted on the 22<sup>nd</sup> day of June, 1932, direct the preparation by the County Surveyor of an official map of the property of the County of Los Angeles bounded by North Broadway, Temple Street, Spring Street, and the southwesterly line of Court Street (vacated).*

*NOW THEREFORE be it resolved that this map entitled "Official Map of the County of Los Angeles, Region 39, Division 329," be and the same is hereby approved and adopted.*

*The foregoing resolution was on the 19<sup>th</sup> day of Feb., 1934, adopted by the Board of Supervisors of the County of Los Angeles, State of California.*

ATTEST: L. E. LAMPTON

*County Clerk and ex-officio Clerk  
of the Board of Supervisors of the  
County of Los Angeles.*

By: Mamie B. Beatty  
Deputy

John R. Quinn  
Chairman of the Board of Supervisors  
Supervisor 4<sup>th</sup> District

Hugh A. Thatcher  
Supervisor 1<sup>st</sup> District

Roger Jessup  
Supervisor 5<sup>th</sup> District

H. M. Baine  
Supervisor 3<sup>rd</sup> District

Gordon L. McDonough  
Supervisor 2<sup>nd</sup> District

L. E. LAMPTON  
County Clerk and ex-officio Clerk  
of the Board of Supervisors of  
the County of Los Angeles.

By: Mamie B. Beatty  
Deputy.

Sht. 2 9-E-3  
A-22

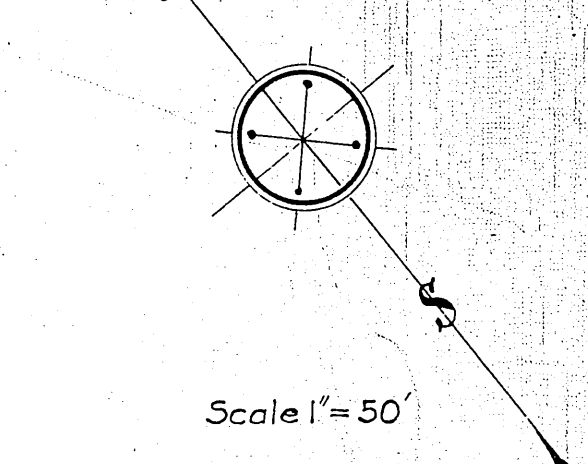
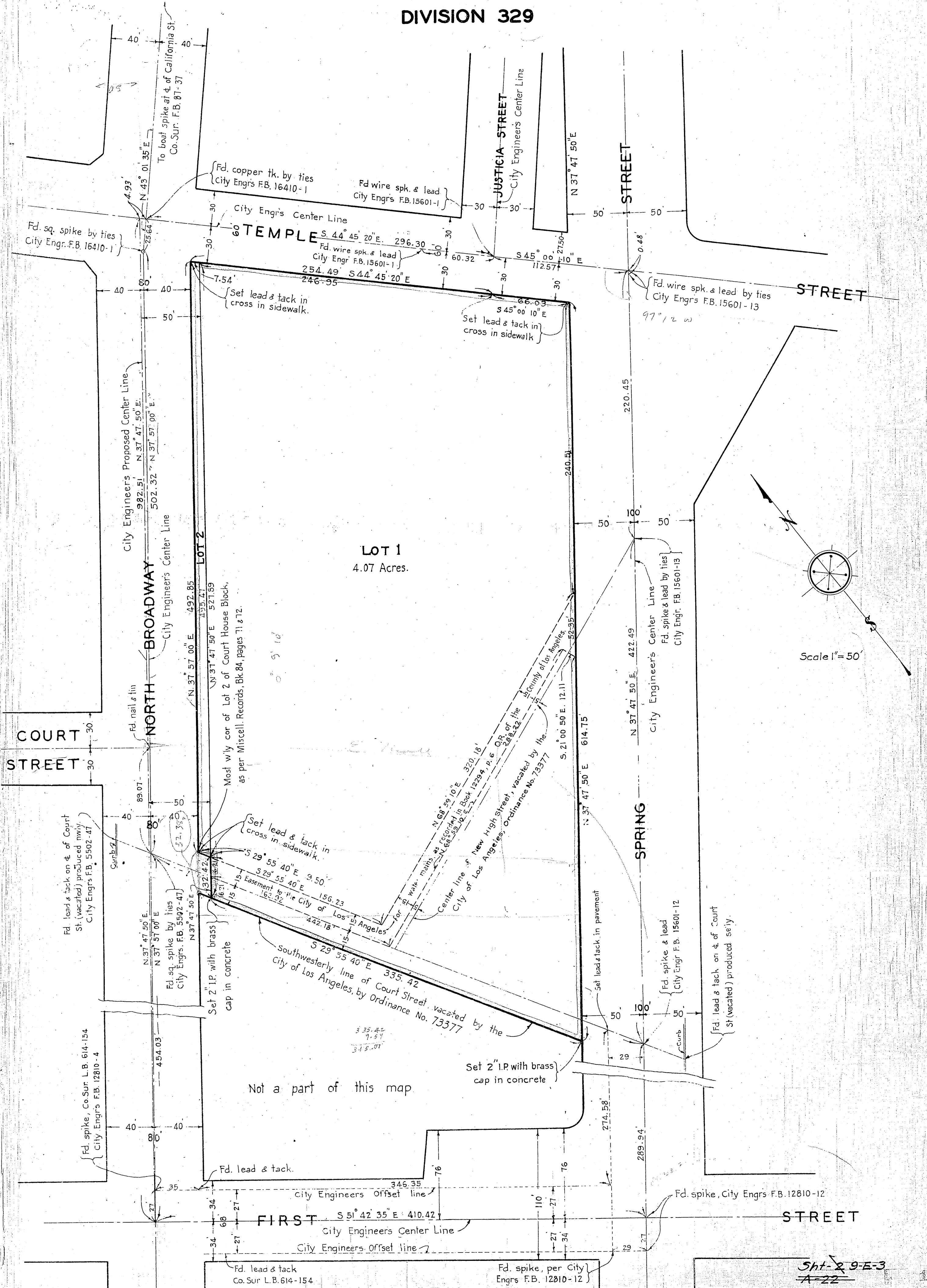
Filed Mar. 1, 1934

# OFFICIAL MAP OF THE COUNTY OF LOS ANGELES

## REGION 39

SHEET 2 57

DIVISION 329



Not a part of this map

Filed Mar. 1, 1934

Sht. 29-E-3  
A-22