

OFFICIAL MAP OF THE COUNTY OF LOS ANGELES REGION 36

DIVISIONS
1 & 28

IN THE CITY OF LOS ANGELES

BEING A PLAT OF PORTIONS OF LOTS 3,4,5,6,7 AND 8, ALL OF LOTS 9,10,11, AND 12;
AND PORTIONS OF LOTS 13,19 AND 20, BOCA DE CAÑON, AS SHOWN ON MAP RECORDED
IN BOOK 18, PAGE 90 OF MAPS; AND A REPLAT OF LOT 37, DIVISION 1, REGION 36,
AS SHOWN ON MAP RECORDED IN BOOK 1, PAGE 85 OF OFFICIAL MAPS; ALL REC-
ORDS OF LOS ANGELES COUNTY; ALSO PORTIONS OF MANDEVILLE CANYON ROAD
AS VACATED BY ORDINANCE NO. 75848 (N.S.) OF THE CITY OF LOS ANGELES.

LOS ANGELES CALIFORNIA JANUARY 1940
ALFRED JONES COUNTY SURVEYOR

THIS MAP WAS PREPARED FROM SURVEYS MADE BY THE ENGINEERING DEPARTMENT OF
THE LOS ANGELES MOUNTAIN PARK CO., FROM RECORDED DEEDS AND FROM THE LOS
ANGELES COUNTY ASSESSOR'S RECORDS.

BEARINGS ARE BASED ON COUNTY SURVEYOR'S MAP No. 5355.

WE HEREBY CERTIFY THAT ON THE _____ DAY OF _____, 1940, THE WITHIN
MAP WAS APPROVED AND ADOPTED AS AN OFFICIAL MAP BY THE BOARD OF SUPERVISORS OF
THE COUNTY OF LOS ANGELES BY RESOLUTION DULY ADOPTED, AS FOLLOWS, TO-WIT:

"WHEREAS THE BOARD OF SUPERVISORS OF THE COUNTY OF
LOS ANGELES, STATE OF CALIFORNIA, PURSUANT TO THE PROVISIONS
OF SECTION 3658 A OF THE POLITICAL CODE OF THE STATE OF CAL-
IFORNIA, DID, BY ORDER ADOPTED ON THE 8TH DAY OF AUGUST, 1939,
DIRECT THE PREPARATION BY THE COUNTY SURVEYOR OF AN OFF-
ICIAL MAP OF PROPERTY IN THE BOCA DE CAÑON TRACT,

NOW THEREFORE BE IT RESOLVED THAT THIS MAP EN-
TITLED "OFFICIAL MAP OF THE COUNTY OF LOS ANGELES, REGION
36, DIVISIONS 1 AND 28," BE AND THE SAME IS HEREBY APPROVED
AND ADOPTED.

THE FOREGOING RESOLUTION WAS ON THE _____ DAY OF _____,
1940, ADOPTED BY THE BOARD OF SUPERVISORS OF THE COUNTY
OF LOS ANGELES, STATE OF CALIFORNIA.

ATTEST: L.E. LAMPTON
COUNTY CLERK AND EX-OFFICIO CLERK
OF THE BOARD OF SUPERVISORS OF
THE COUNTY OF LOS ANGELES.

BY _____"
DEPUTY

CHAIRMAN OF THE BOARD OF SUPERVISORS
SUPERVISOR 5TH DISTRICT

SUPERVISOR 1ST DISTRICT

SUPERVISOR 2ND DISTRICT

SUPERVISOR 3RD DISTRICT

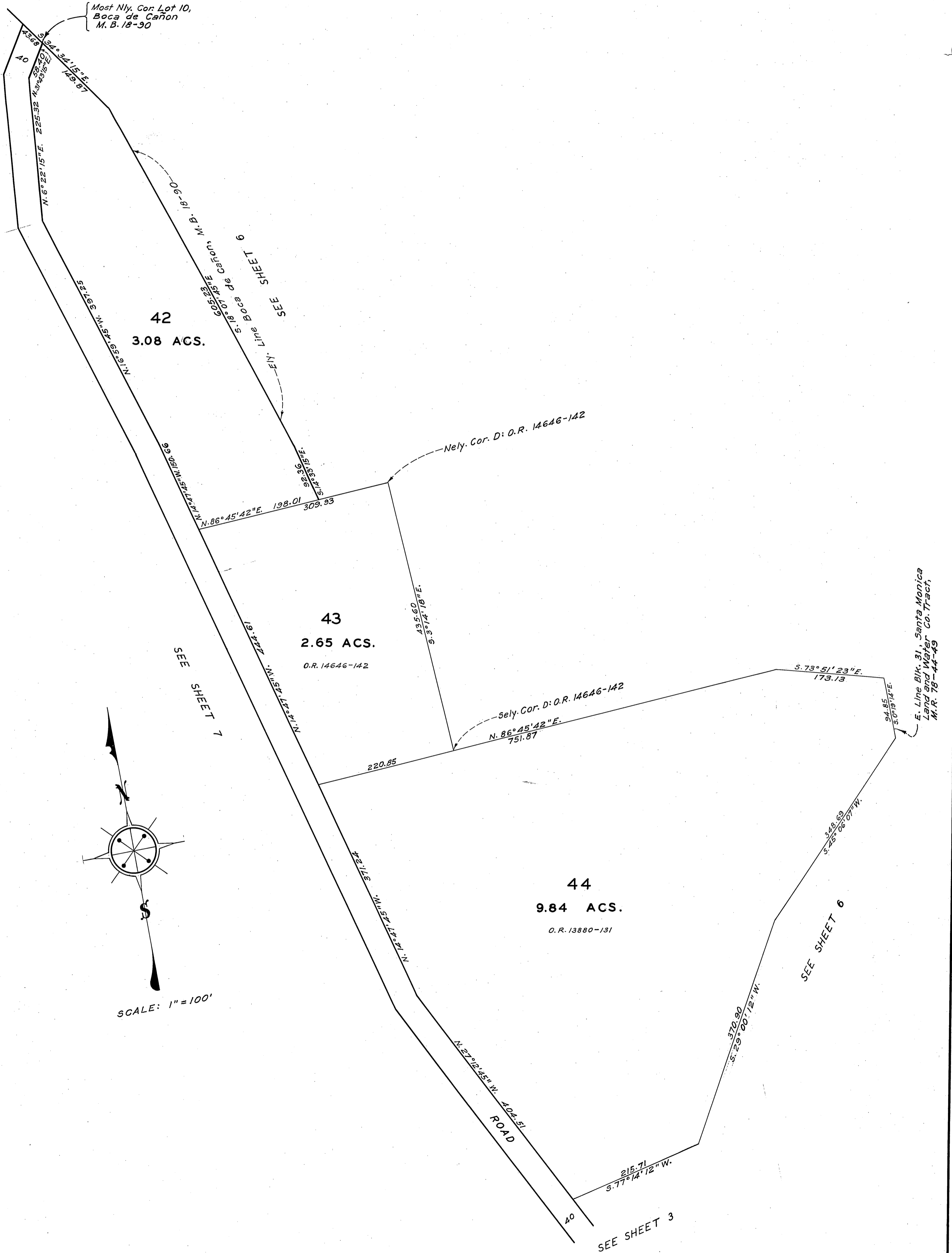
SUPERVISOR 4TH DISTRICT

L.E. LAMPTON
COUNTY CLERK AND EX-OFFICIO CLERK
OF THE BOARD OF SUPERVISORS OF
THE COUNTY OF LOS ANGELES.

BY _____
DEPUTY

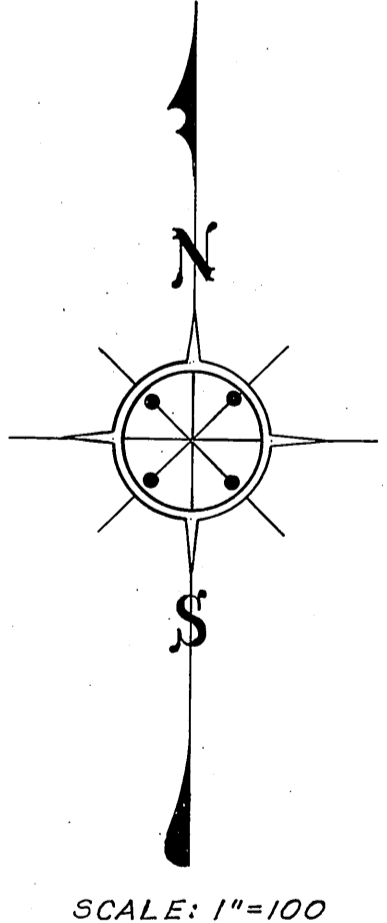
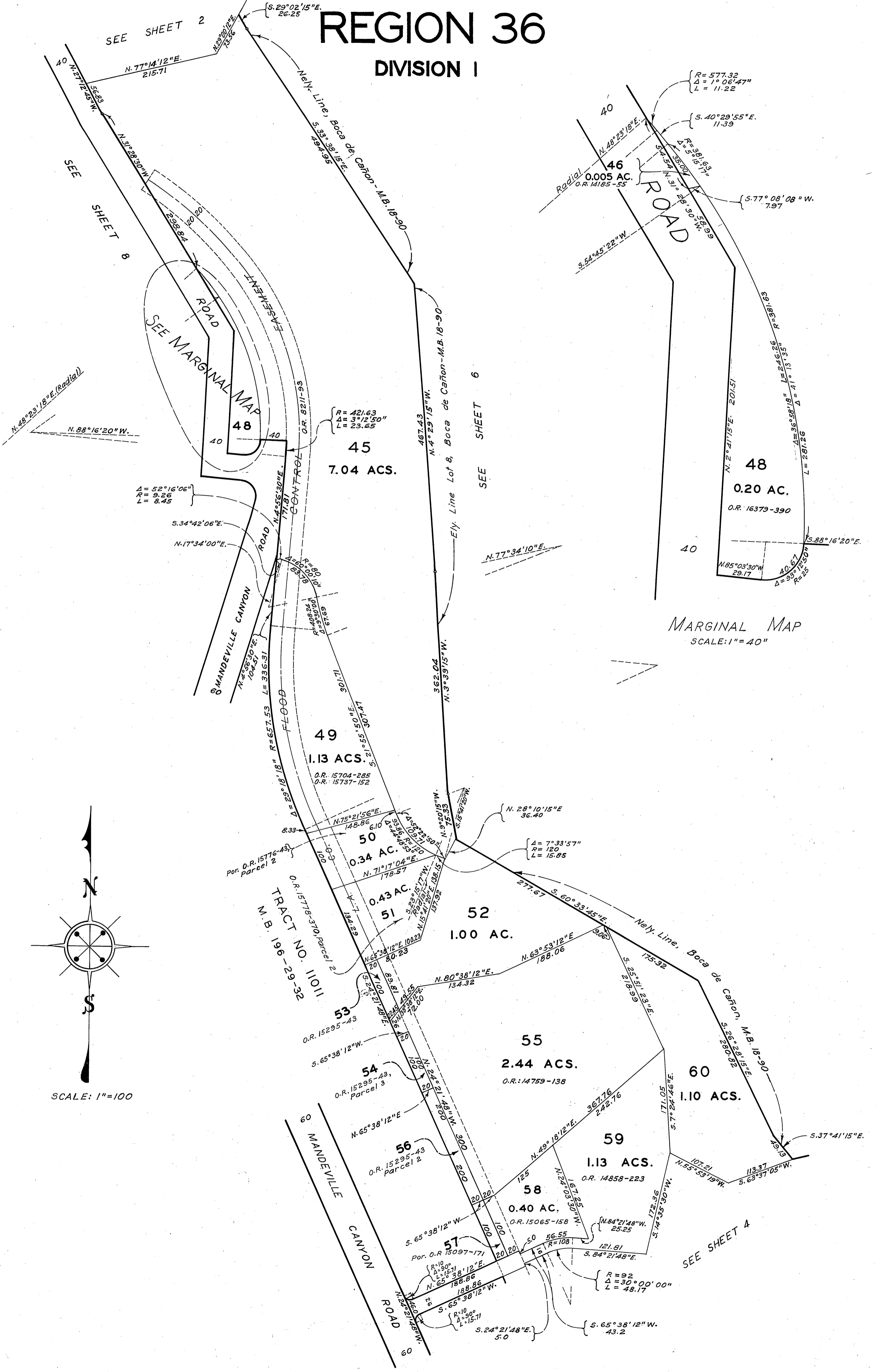
OFFICIAL MAP OF THE COUNTY OF LOS ANGELES REGION 36

DIVISION I



OFFICIAL MAP OF THE COUNTY OF LOS ANGELES REGION 36

DIVISION I



SEE SHEET 2

SEE SHEET 8

SEE MARGINAL MAP

SEE SHEET 6

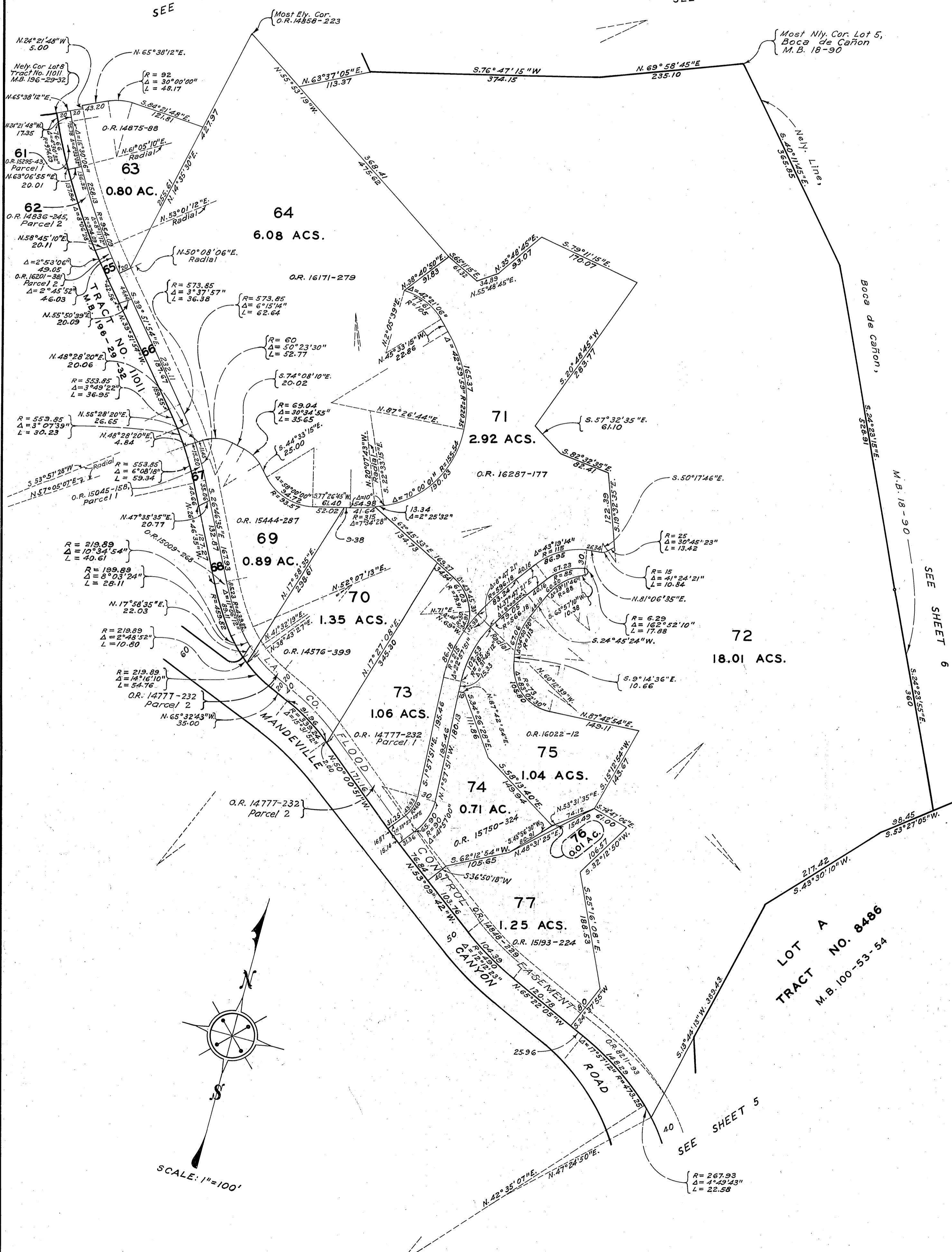
MARGINAL MAP
SCALE: 1" = 40"

SEE SHEET 4

OFFICIAL MAP OF THE COUNTY OF LOS ANGELES REGION 36 DIVISION I

SEE SHEET 3

SEE SHEET 6



LOT A
TRACT NO. 8486
M.B. 100-53-54

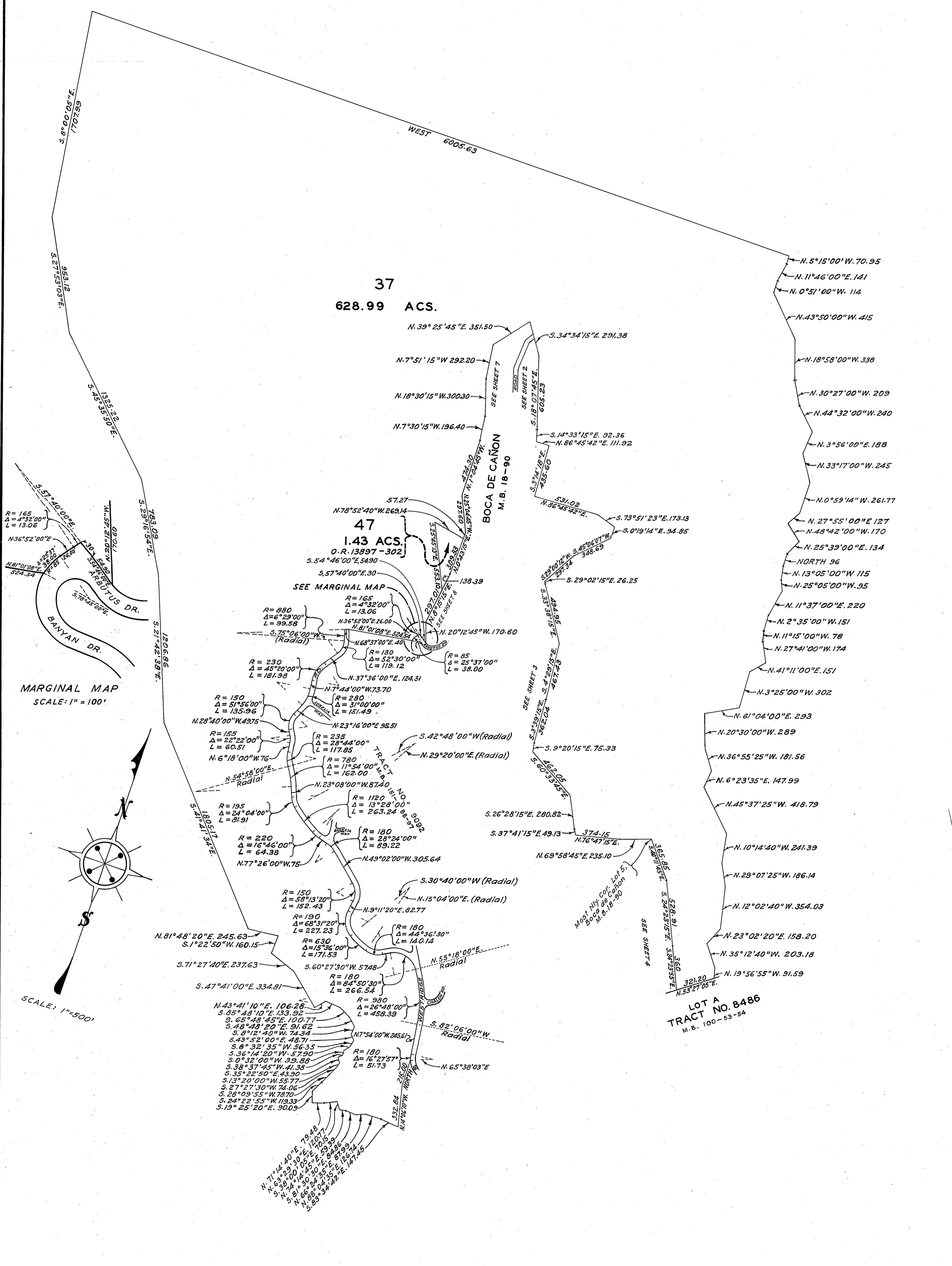
SCALE: 1"=100'

SEE SHEET 5

OFFICIAL MAP OF THE COUNTY OF LOS ANGELES

REGION 36

DIVISION I



37
628.99 ACS.

47
1.43 ACS.
O.R. 13897-302

MARGINAL MAP
SCALE: 1" = 100'

SCALE: 1" = 500'

LOT A
TRACT NO. 8486
M.B. 100-53-84

OFFICIAL MAP OF THE COUNTY OF LOS ANGELES REGION 36

DIVISION 28

Most Nly. Cor. Lot II,
Boca de Cañon
M. B. 18-90

