

OFFICIAL MAP

OF PART OF THE CITY OF REDONDO BEACH, COUNTY OF LOS ANGELES STATE OF CALIFORNIA.

Filed
 AT THE OFFICE OF THE CITY CLERK OF REDONDO BEACH
 JULY 8, 1964
 1:22 P.M.
 4
 81
 OFFICIAL MAPS
 MAY E. LEE
 COUNTY RECORDER
 Deputy

BEING A SURVEY OF A PORTION OF THOSE PARCELS OF TIDELANDS, SUBMERGED LAND AND ADJOINING UPLAND LEASED TO "KING HARBOR MARINA AND DEVELOPEMENT CORPORATION" IN THAT CERTAIN LEASE DATED MARCH 13, 1961

Free

RESOLUTION NO. 4128

A Resolution of the City Council of the City of Redondo Beach, California, adopting an Official Map of a portion of those certain lands described as the "Redondo Beach Marina" and more particularly described as the amended and final legal description of the parcels of tidelands and adjoining upland leased to KING HARBOR MARINA AND DEVELOPEMENT CORPORATION in that certain lease dated March 13, 1961 and referred to therein as Exhibit "B".

WHEREAS, there are a number of parcels of land which overlap and cross existing recorded lot and street boundary lines, parcels of land which have been constructed upon submerged tideland and which said overlapping, crossing of existing lot lines and construction upon submerged tidelands have been formally approved by the City Council of the City of Redondo Beach.

Now, THEREFORE, the City Council of the City of Redondo Beach does resolve as follows:

Section 1. It is hereby ordered that the attached map consisting of (3) sheets be, and the same hereby is, approved and adopted as the Official Map of the above described property in accordance with the provisions of Chapter 3, Part 2, of Division 4 of the Business and Professions Code, Section 11650 to 11658 inclusive, for the uses and purposes therein named.

Section 2. The City Clerk of the City of Redondo Beach hereby is directed to endorse on the face of said map a copy of this resolution attested by the Official Seal of the City of Redondo Beach.

Section 3. The City Clerk shall certify to the adoption of this Resolution.

APPROVED AND ADOPTED THIS 6TH DAY OF JULY, 1964

William F. Cynleger
 MAYOR

APPROVED as to form:

Carol M. Cowan
 CITY ATTORNEY, CITY OF REDONDO BEACH

BASIS OF BEARING:

The basis of bearing of S 87°05'30" W 0.116 line from a certain 2 1/2" Brass Disc marked H-16 to a certain 2 1/2" Brass Disc marked H-17 as shown on a record of survey recorded in Book 78 page 100 was used as the basis of bearing for this map.

I, Emmett J. Rush hereby certify that I am a licensed Surveyor of the State of California and that this map consisting of three sheets, correctly represents a survey completed under my supervision in June, 1964 and that all monuments shown hereon actually exist and their positions are correctly shown.

Emmett J. Rush
 L.S. 1023

FRED M. ARNOLD

City Clerk of the City of Redondo Beach, hereby certify that the foregoing Resolution has been approved and adopted by the City Council of the City of Redondo Beach and that the foregoing certificate is signed by the Mayor as presiding officer of said body.

In witness whereof, I have hereunto set my hand and affixed the Official Seal of the City of Redondo Beach.

this 6th day of July, 1964.

Fred M. Arnold
 City Clerk City of Redondo Beach

The H-1 monuments shown as found on this map are Brass Discs on 2 1/2" Iron Pipe set 12" below the ground as they are shown by a map that is recorded in Book 121 page 100 of record of survey of the County of Los Angeles, State of California.

E.H. GRAHAM, Jr. hereby certify that I am the City Engineer of the City of Redondo Beach, County of Los Angeles, State of California and that this map consisting of (3) sheets was completed under my direction in July, 1964, in accordance with the provisions of Chapter 3, Part 2, Division 4, of the Business and Professions Code, Section 11650 to 11658 inclusive of the State of California, and under the direction and with the approval of the City Council of the City of Redondo Beach.

E.H. Graham, Jr.
 CITY ENGINEER, CITY OF REDONDO BEACH

SCALE 1"=80'

SHEET 3 OF 3 SHEETS

RUSH SURVEYING CO.

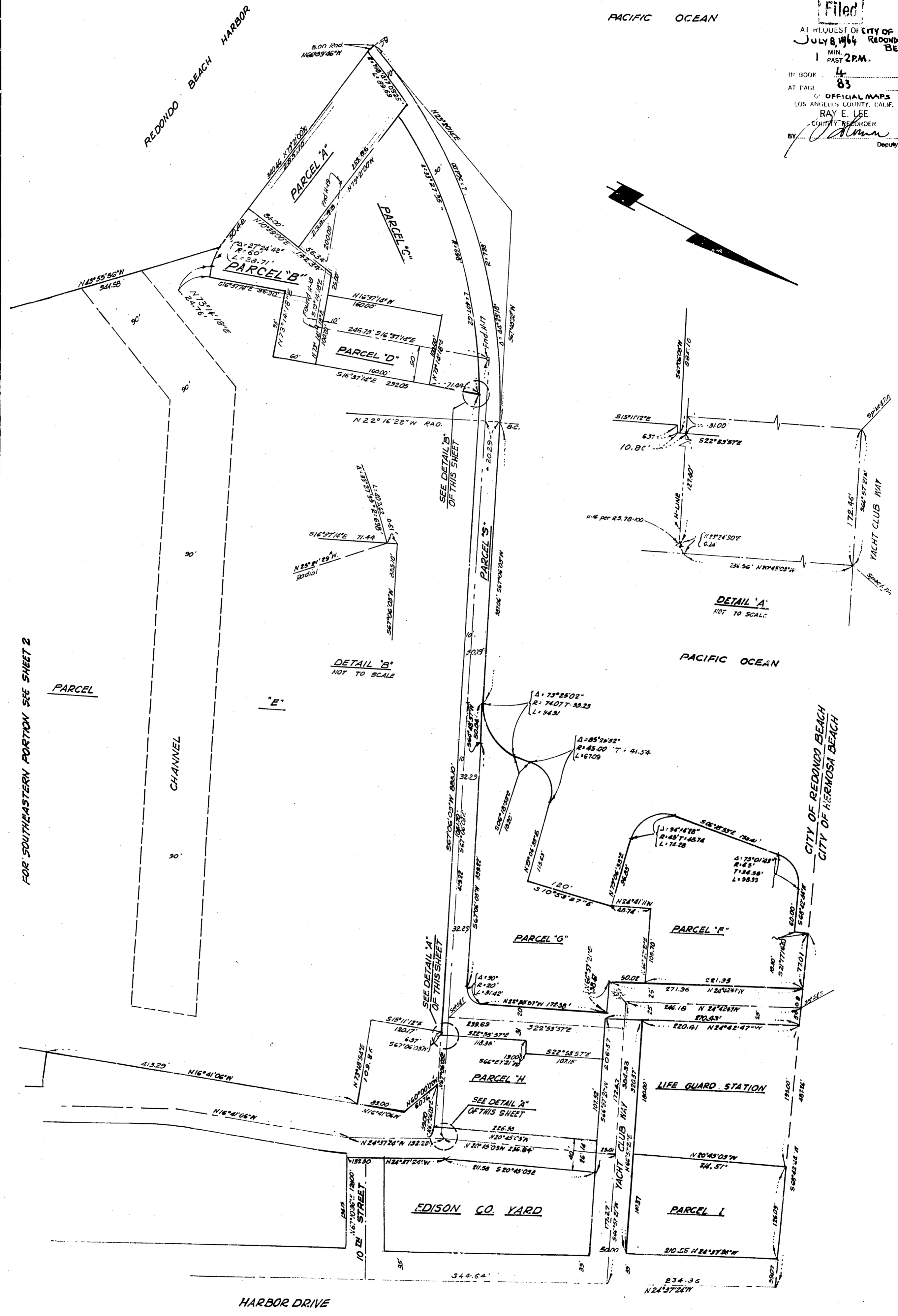
1806 P.O. 3

PACIFIC OCEAN

Filed

AT REQUEST OF CITY OF REDONDO BEACH
JULY 8, 1964
1 MIN. PAST 2 P.M.

IN BOOK 4
AT PAGE 83
OFFICIAL MAPS
LOS ANGELES COUNTY, CALIF.
RAY E. LEE
COUNTY RECORDER
Deputy



FOR SOUTHEASTERN PORTION SEE SHEET 2

PARCEL

E

DETAIL 'B'
NOT TO SCALE

SEE DETAIL 'A'
OF THIS SHEET

SEE DETAIL 'A'
OF THIS SHEET

DETAIL 'A'
NOT TO SCALE

PACIFIC OCEAN

CITY OF REDONDO BEACH
CITY OF HERMOSA BEACH

HARBOR DRIVE

UNIVERSITY MICROFILMS