

OFFICIAL MAP

OF PART OF THE CITY OF REDONDO BEACH COUNTY OF LOS ANGELES STATE OF CALIFORNIA

FILED
 RECORDED
 AT REQUEST OF OWNER CITY OF
 Nov. 12, 1964 REDONDO
 21 MIN. PAST 2 P. M. BEACH

IN BOOK 4
 AT PAGE 90
 OF MAP RECORDS OFFICIAL
 LOS ANGELES COUNTY, CALIF. RECORDS

RAY E. LEE
 COUNTY RECORDER

Deputy
 J. Lee

BEING A SURVEY OF A PORTION OF TRACT 10019 AS PER MAP RECORDED IN BOOK 182 PAGES 1 ET. SEQ., OF MAPS IN THE OFFICE OF THE COUNTY RECORDER OF LOS ANGELES COUNTY, SHOWING CERTAIN PARCELS OF LAND IN SAID AREA BY SEPERATE PARCEL NUMBERS FOR THE PURPOSE OF IDENTIFICATION OF SAID PARCELS BY REFERENCE TO SAID NUMBERS AS AUTHORIZED BY CHAPTER 3, PART 2, DIVISION 4 OF THE BUSINESS AND PROFESSIONS CODE, SECTION 11650 TO 11658 INCLUSIVE, ALSO SHOWING AND NAMING ALL OPEN ROADS, LANES, STREETS AND AVENUES THEREIN.

RESOLUTION No. 4185

A RESOLUTION OF THE CITY COUNCIL OF THE CITY OF REDONDO BEACH, CALIFORNIA ADOPTING AN OFFICIAL MAP FOR A PORTION OF THAT PART OF THE CITY OF REDONDO BEACH EXTENDING SOUTH FROM OPAL STREET TO CAMINO REAL AND BETWEEN SOUTH PROSPECT AVENUE AND THE EAST CITY BOUNDARY LINE, CONSISTING OF ALL OR PORTIONS OF BLOCKS 50-51-53-54-62-63-64 AND 67 OF TRACT No. 10019 AS MAP RECORDED IN BOOK 182 PAGES 1 ET. SEQ. IN THE OFFICE OF THE COUNTY RECORDER OF LOS ANGELES COUNTY.

WHEREAS; THE EXISTING SUB-DIVIDED LOTS IN THE ABOVE MENTIONED BLOCKS ARE DELINEATED IN A MANNER THAT PRECLUDES ORDERLY AND ECONOMICAL LAND DEVELOPMENT AND ALSO AS THE ENTIRE AREA IS PRESENTLY UNIMPROVED AND AS THE EXISTING UNIMPROVED STREET PATTERN, WITHIN THE AREA, IS UNDESIRABLE IN LIGHT OF TODAY'S TRAFFIC, THE CITY COUNCIL OF THE CITY OF REDONDO BEACH HAS CAUSED THIS MAP TO BE PREPARED.

NOW, THEREFORE, THE CITY COUNCIL OF THE CITY OF REDONDO BEACH DOES RESOLVE AS FOLLOWS:

SECTION 1 IT IS HEREBY ORDERED THAT THE ATTACHED MAP CONSISTING OF FOUR SHEETS, BE AND THE SAME HEREBY IS APPROVED AND ADOPTED AS THE OFFICIAL MAP OF THE ABOVE DESCRIBED CITY AREA, IN ACCORDANCE WITH THE PROVISIONS OF CHAPTER 3, PART 2, OF DIVISION 4 OF THE BUSINESS AND PROFESSIONS CODE, SECTIONS 11650 TO 11658 INCLUSIVE, FOR THE USES AND PURPOSES THEREIN NAMED.

SECTION 2 THE CITY CLERK OF THE CITY OF REDONDO BEACH HEREBY IS DIRECTED TO ENDORSE ON THE FACE OF SAID MAP A COPY OF THIS RESOLUTION ATTESTED BY THE OFFICIAL SEAL OF THE CITY OF REDONDO BEACH, AND IS ALSO DIRECTED TO CAUSE THE SAID ENDORSED MAP TO BE RECORDED IN THE OFFICE OF THE COUNTY RECORDER OF LOS ANGELES COUNTY.

SECTION 3 THE DIRECTOR OF PUBLIC WORKS IS DIRECTED TO CERTIFY THAT THIS MAP COMPLY WITH THE PROVISIONS OF THE BUSINESS & PROFESSION CODE, CHAPTER 3, PART 2, DIV 4 - SECTIONS 11650 TO 11658.

SECTION 4 THE CITY CLERK SHALL CERTIFY TO THE ADOPTION OF THIS RESOLUTION.

APPROVED AND ADOPTED THIS 9th DAY OF November, 1964

Robert L. Smith COUNCILMAN
William F. Gilbey COUNCILMAN
Ray E. Lee MAYOR
Ray E. Lee COUNCILMAN

I, FRED M. ARNOLD CITY CLERK OF THE CITY OF REDONDO BEACH, HEREBY CERTIFY THAT THE FOREGOING CERTIFICATE IS SIGNED BY A MAJORITY OF THE MEMBERS OF THE COUNCIL OF THE CITY OF REDONDO BEACH AND THE MAYOR AS PRESIDING OFFICER OF SAID BODY.

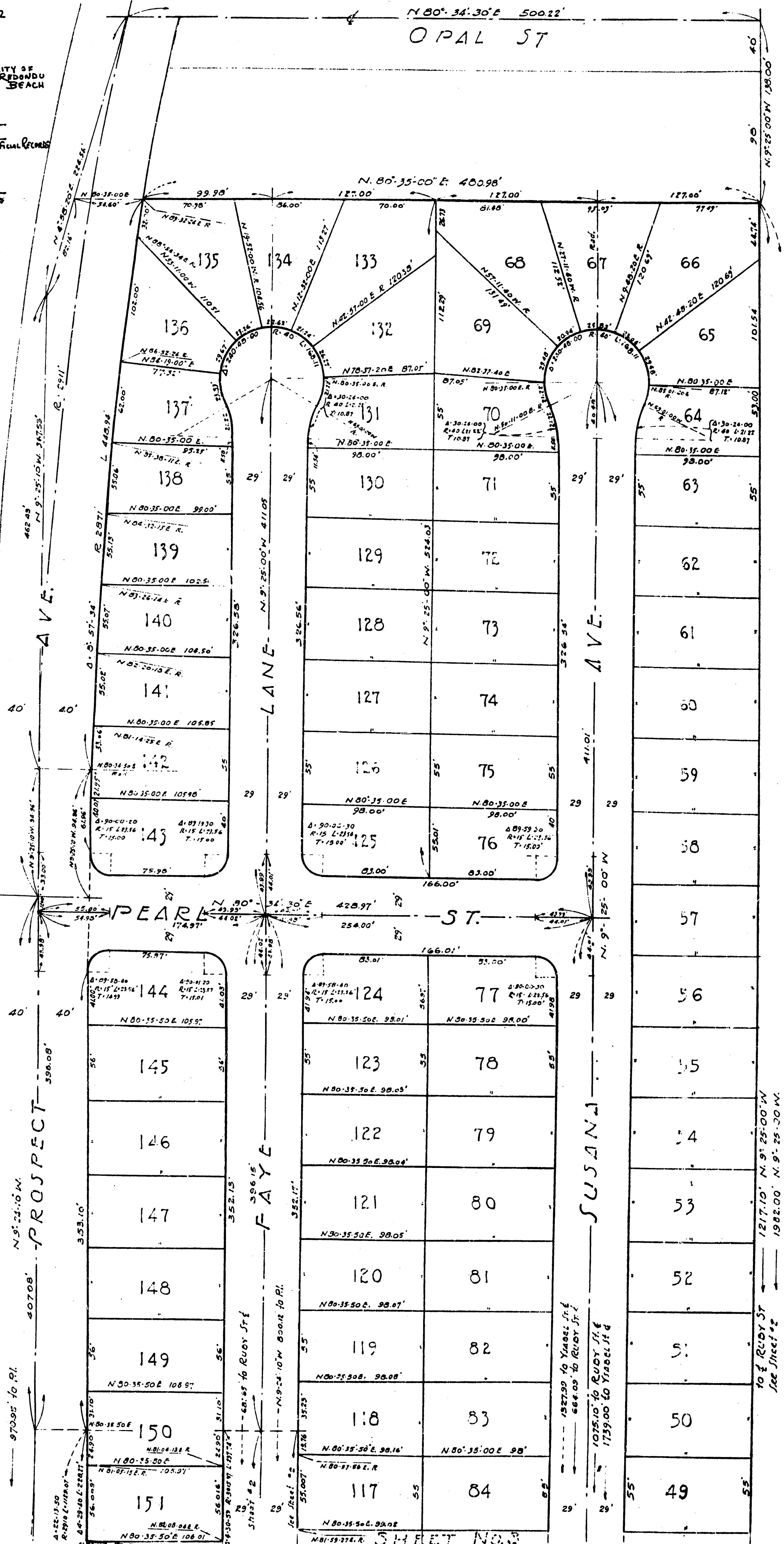
IN WITNESS THEREOF, I HAVE HERETO SET MY HAND AND AFFIXED THE OFFICIAL SEAL OF THE CITY OF REDONDO BEACH THIS 9th DAY OF November, 1964.

Fred M. Arnold
 CITY CLERK OF THE CITY OF REDONDO BEACH

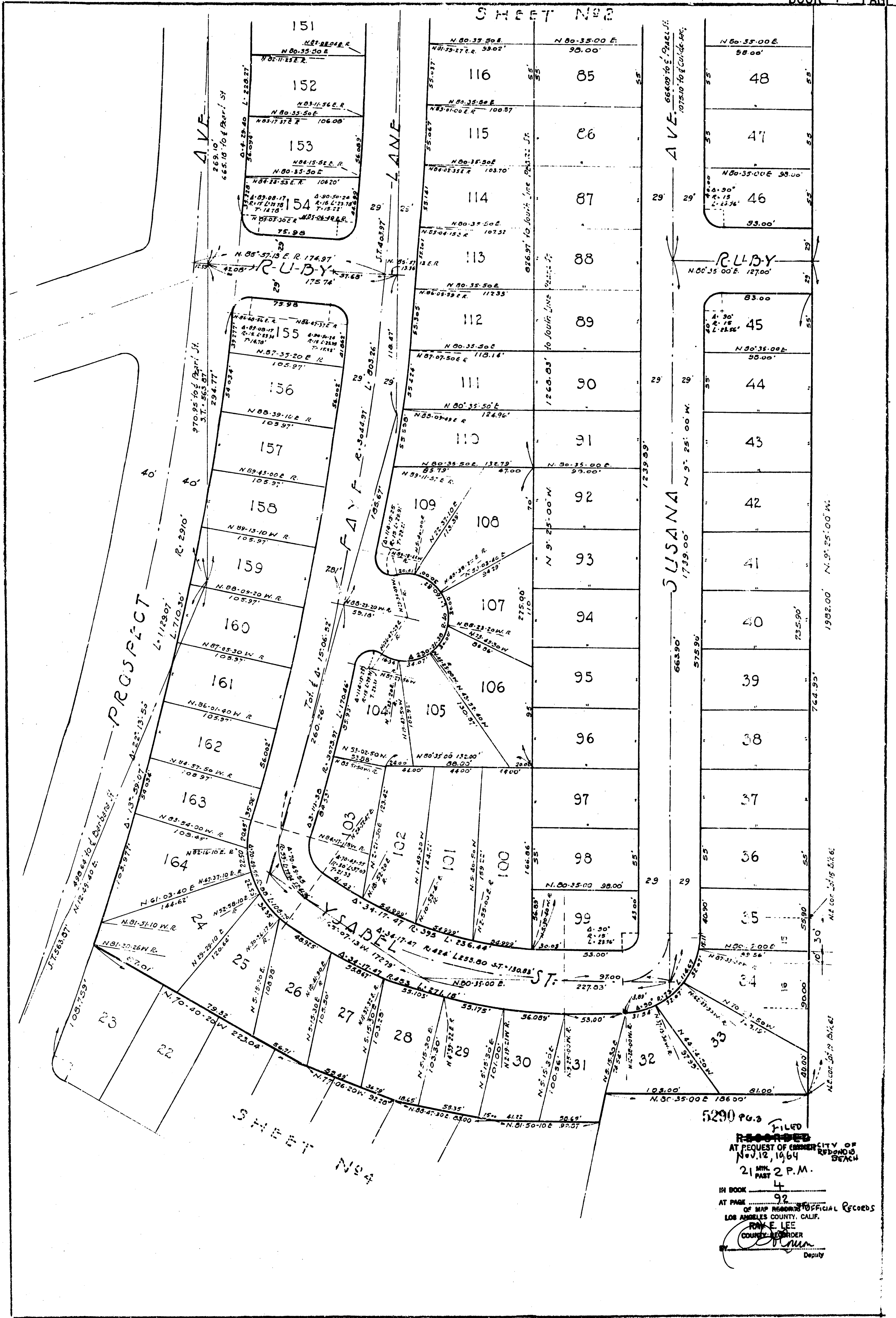
I, Robert L. Smith HEREBY CERTIFY THAT I AM THE DIRECTOR OF PUBLIC WORKS OF THE CITY OF REDONDO BEACH, COUNTY OF LOS ANGELES, STATE OF CALIFORNIA, AND THAT THIS MAP CONSISTING OF FOUR (4) SHEETS, WAS COMPLETED UNDER MY DIRECTION November 9th, 1964, IN ACCORDANCE WITH THE PROVISIONS OF CHAPTER 3, PART 2, DIVISION 4, OF THE BUSINESS AND PROFESSION CODE, SECTIONS 11650 TO 11658 INCLUSIVE, OF THE STATE OF CALIFORNIA, AND UNDER THE DIRECTION AND WITH THE APPROVAL OF THE CITY COUNCIL OF SAID CITY OF REDONDO BEACH.

Robert L. Smith
 DIRECTOR OF PUBLIC WORKS OF
 THE CITY OF REDONDO BEACH

FILED
RECORDED
 AT REQUEST OF OWNER
 NOV. 12, 1964
 21 MIN. PAST 2 P.M.
 IN BOOK 4
 AT PAGE 91
 OF MAP RECORDS OF OFFICIAL RECORDS
 LOS ANGELES COUNTY, CALIF.
 RAY E. LEE
 COUNTY RECORDER
 BY *[Signature]* Deputy



SHEET NO 2



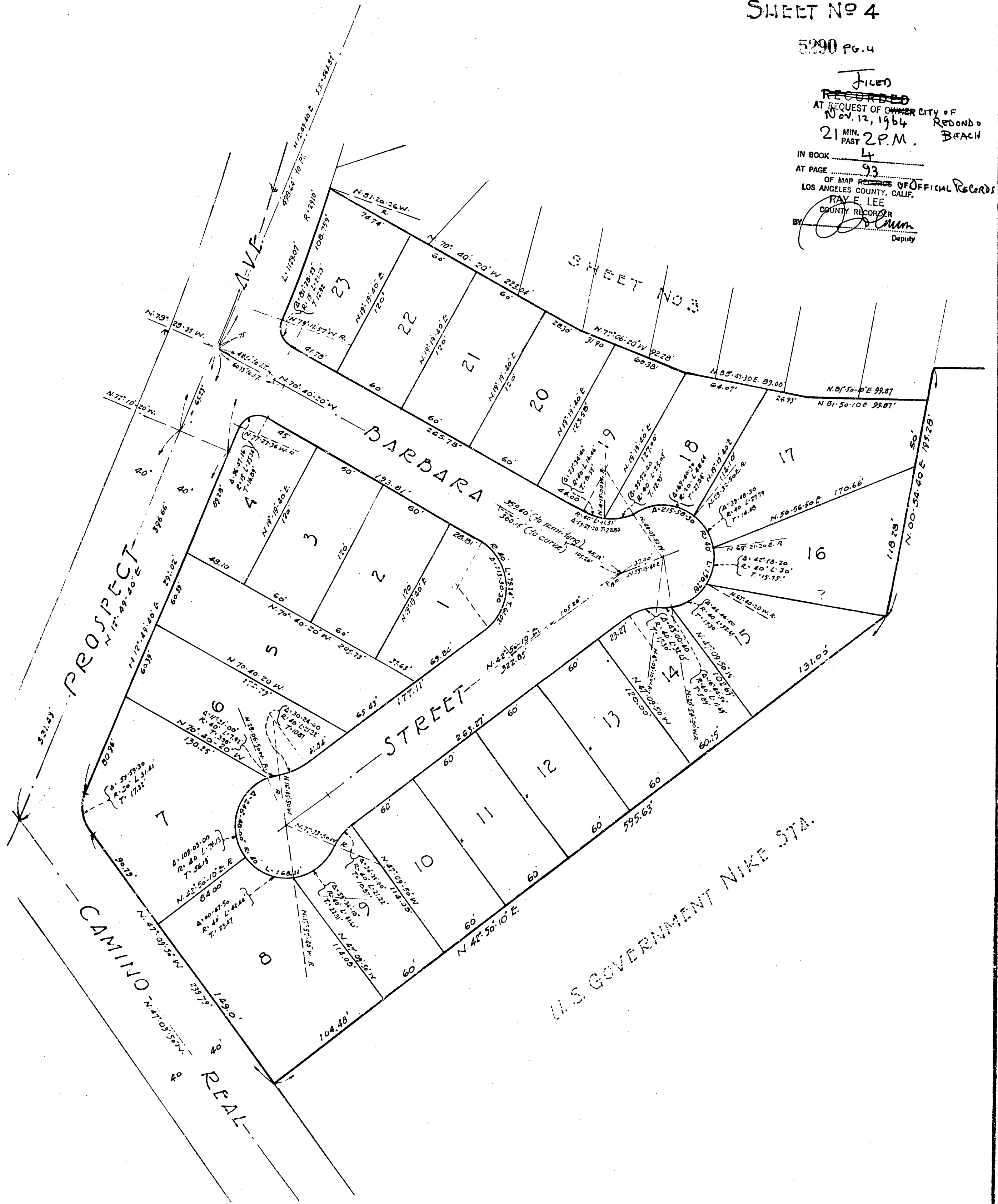
SHEET NO 4

5290 PG. 3
 FILED
 RECORDED
 AT REQUEST OF CHERIE CITY OF REDONDO BEACH
 NOV. 12, 1964
 21 MIN. PAST 2 P.M.
 IN BOOK 4
 AT PAGE 92
 OF MAP RECORDS OFFICIAL RECORDS
 LOS ANGELES COUNTY, CALIF.
 RAY E. LEE
 COUNTY RECORDER
 Deputy

SHEET NO 4

5290 PG. 4

FILED
 RECORDED
 AT REQUEST OF OWNER CITY OF REDONDO BEACH
 Nov. 12, 1964
 21 MIN. PAST 2 P.M.
 IN BOOK 4
 AT PAGE 93
 OF MAP RECORDS OF OFFICIAL RECORDS
 LOS ANGELES COUNTY, CALIF.
 RAY E. LEE
 COUNTY RECORDER
 BY *[Signature]*
 Deputy



U.S. GOVERNMENT NIKE STA.