

# OFFICIAL MAP No. 7

OF PART OF THE CITY OF REDONDO BEACH, COUNTY OF LOS ANGELES, STATE OF CALIFORNIA,

Being a portion of Lots 9, 10 and 12, Section 20, Township 3 South, Range 14 West, Rancho Sausal Redondo, as said lots are shown on Partition Map filed as Map Number 140 in the Office of the County Recorder of Los Angeles County.

3580

FILED AT REQUEST OF CITY CLERK OCT. 1, 1968 35 MIN. PAST

IN BOOK 5 AT PAGE 5 OF OFFICIAL MAPS LOS ANGELES COUNTY CALIF. RAY E. LEE COUNTY RECORDER

BY [Signature] Deputy Free

Resolution No. 4708

### Basis of Bearings

Bearings based on Record of Survey Map filed on June 18, 1959, in Book 77, Page 12, Records of Los Angeles County.

### City Clerk's Certificate

I, Fred M. Arnold City Clerk of the City of Redondo Beach, hereby certify that the foregoing Resolution has been approved and adopted by the City Council of the City of Redondo Beach and that the foregoing Certificate is signed by the majority of said Council and the Mayor.

In witness thereto, I have hereto set my hand and affixed the Official Seal of the City of Redondo Beach this 30th day of SEPTEMBER 1968.

[Signature] City Clerk, City of Redondo Beach

### City Engineer's Certificate

I, Henry Feeling hereby certify that I am the City Engineer of the City of Redondo Beach, County of Los Angeles, State of California, and that this Map consisting of four (4) sheets was completed under my direction in SEPTEMBER 1968, in accordance with the provisions of Chapter 3, Part 2, Division 4 of the Business and Professions Code, Section 11650 to 11658 inclusive, of the State of California, and under the direction of and with the approval of the City Council of said City of Redondo Beach.

[Signature] R.C.L. No. 1198 City Engineer, City of Redondo Beach

A resolution of the City Council of the City of Redondo Beach, California, adopting an Official Map for a portion of that part of the City of Redondo Beach extending south from Compton Boulevard to The Atchison, Topoka, and Santa Fe Railway Company's right of way as described in parcels 3 and 4 of deed recorded June 30, 1965 as document number 5567 in the Official Records of Los Angeles County and between Freeman Boulevard and The Atchison, Topoka and Santa Fe Railway Company's 200 foot wide right of way as described in deed recorded in Book 3817 Page 124 of said Official Records, consisting of all or portions of Lots 9, 10 and 12, Section 20, Township 3 South, Range 14 West, Rancho Sausal Redondo, as said lots are shown on Partition Map filed as Map No. 140 in the Office of the County Recorder of said County.

WHEREAS; the above mentioned lots are delineated in a manner that precludes orderly and economical land development and also as parcels of land within the lots have been constructed upon, the City Council of the City of Redondo Beach has caused this map to be prepared.

NOW, THEREFORE, the City Council of the City of Redondo Beach does resolve as follows:

SECTION 1 It is hereby ordered that the attached map consisting of four sheets, be and the same hereby is approved and adopted as the official map of the above described city area, in accordance with the provisions of Chapter 3, Part 2, of Division 4 of the Business and Professions Code, Sections 11650 to 11658 inclusive, for the uses and purposes therein named.

SECTION 2 The City Clerk of the City of Redondo Beach is hereby directed to endorse on the face of said map a copy of this resolution attested by the Official Seal of the City of Redondo Beach, and is also directed to cause the said endorsed map to be recorded in the office of the County Recorder of Los Angeles County.

SECTION 3 The City Engineer is directed to certify that this map complies with the provisions of the Business and Professions Code, Chapter 3, Part 2, Division 4, Sections 11650 to 11658.

SECTION 4 The City Clerk shall certify to the adoption of this resolution.

APPROVED and adopted this 30 day of SEPTEMBER, 1968

[Signature] Mayor

[Signature] Councilman

[Signature] Councilman

[Signature] Councilman

[Signature] Councilman

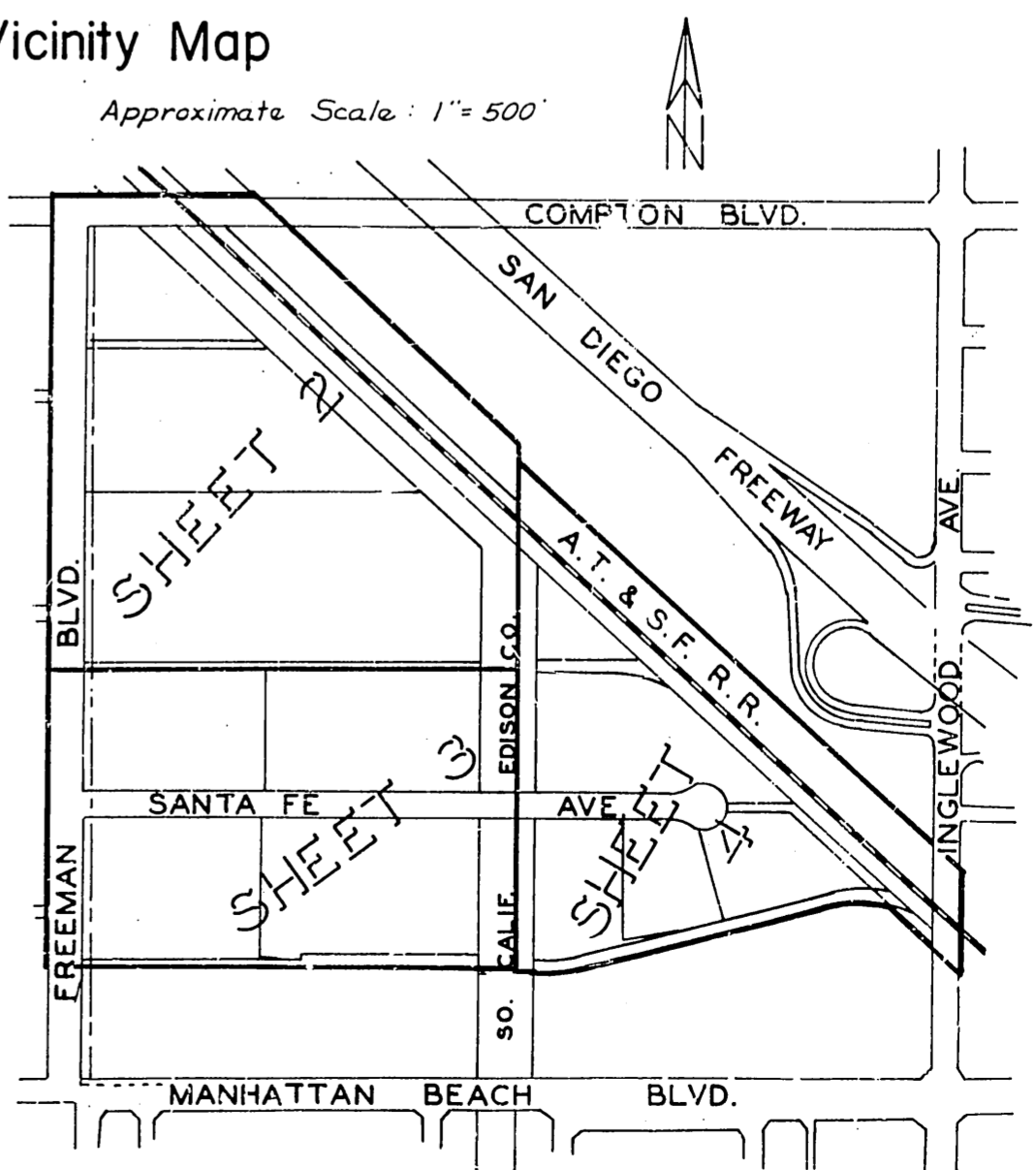
[Signature] Councilman

Approved as to form:

[Signature] City Attorney, City of Redondo Beach

### Vicinity Map

Approximate Scale: 1" = 500'



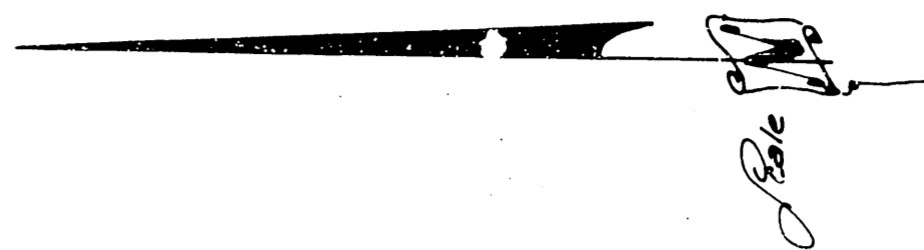
COUNTY ENGINEER'S COPY

FILED WITH LOS ANGELES COUNTY RECORDER, RAY E. LEE

OCT 1 1968

SHEET: 2 OF 4

SCALE: 1" = 100'

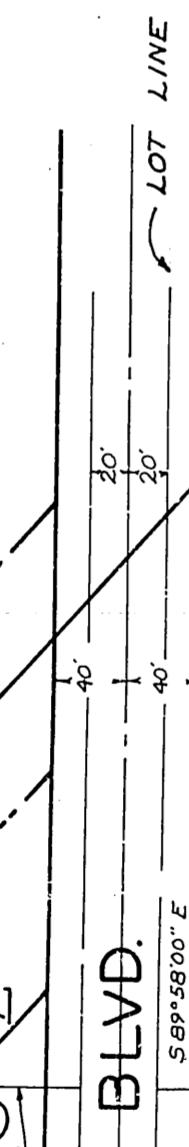


COUNTY ENGINEER'S COPY

LOT 3

LOT 2

COMPTON BLVD.



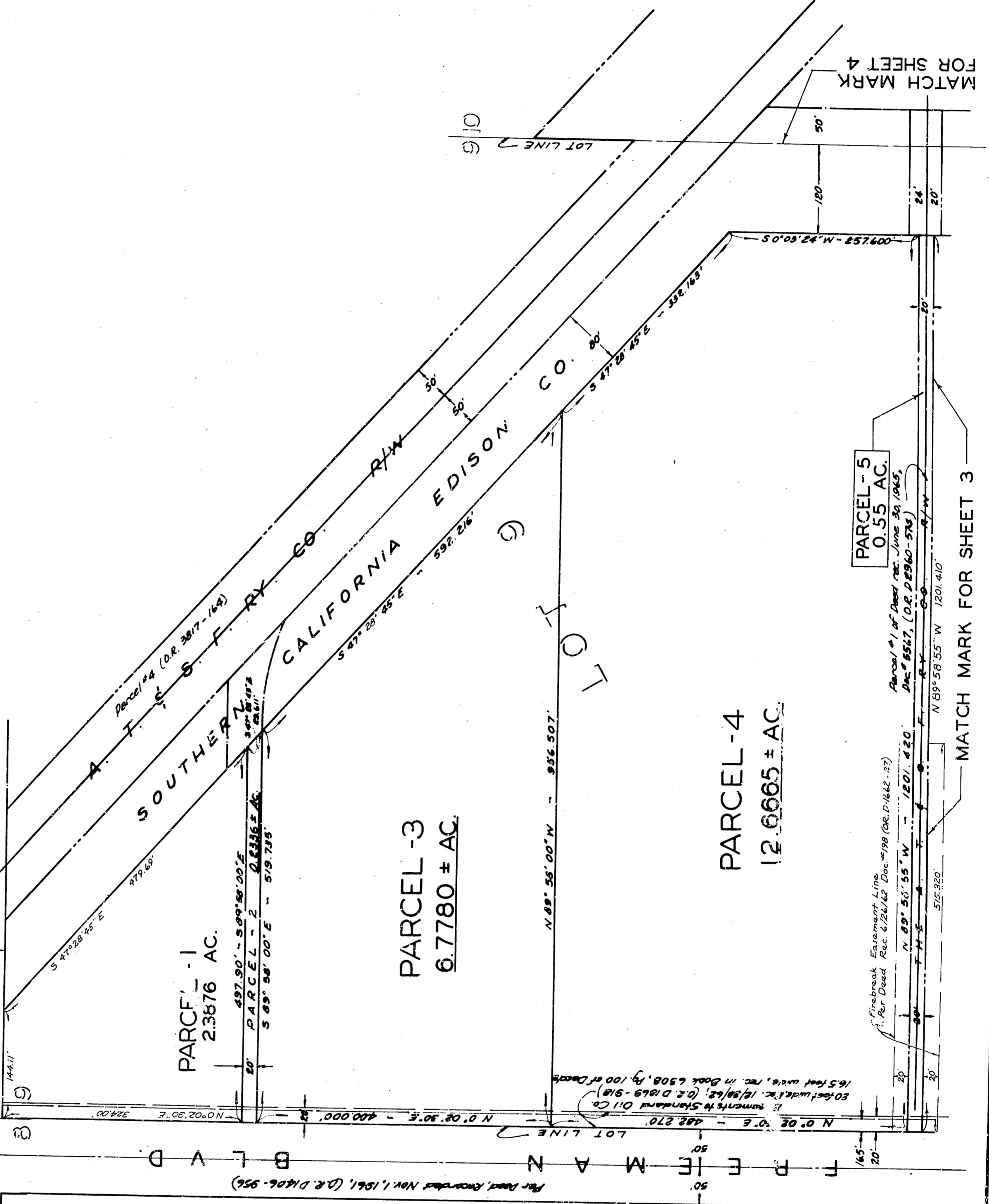
PARCEL - 1  
2.3876 AC.

PARCEL - 2  
0.2316 ± AC.

PARCEL - 3  
6.7780 ± AC.

PARCEL - 4  
12.6665 ± AC.

PARCEL - 5  
0.55 AC.



MATCH MARK FOR SHEET 4

MATCH MARK FOR SHEET 3

Per Land Recorder Nov. 1, 1961, (D.R. D1406-956)

50 foot wide, rec. in Book 6508, pg. 100 of Deeds

Firebreak Easement Line  
Per Deed Rec. 4/26/42 Doc. #198 (D.R. D-1442-37)

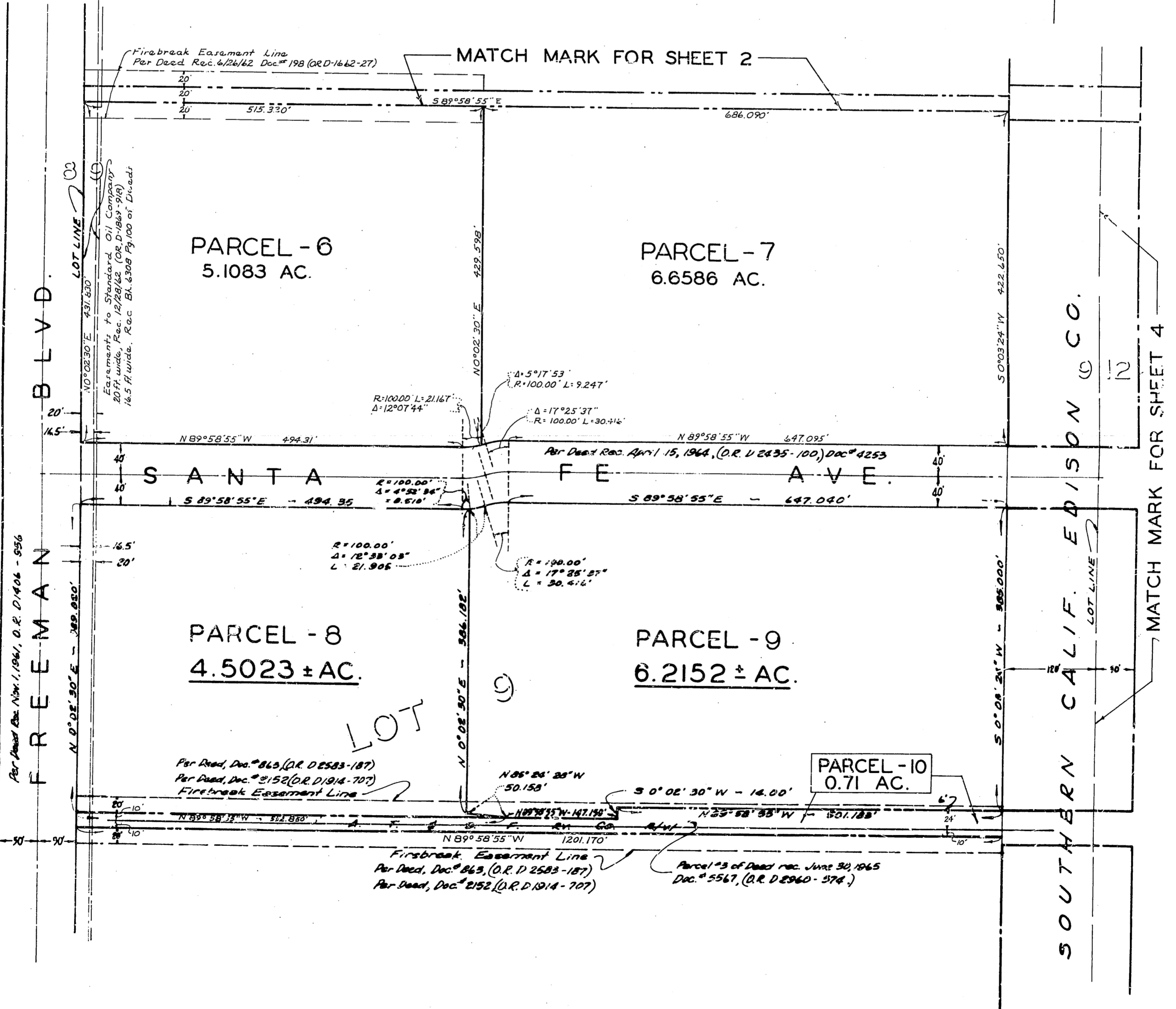
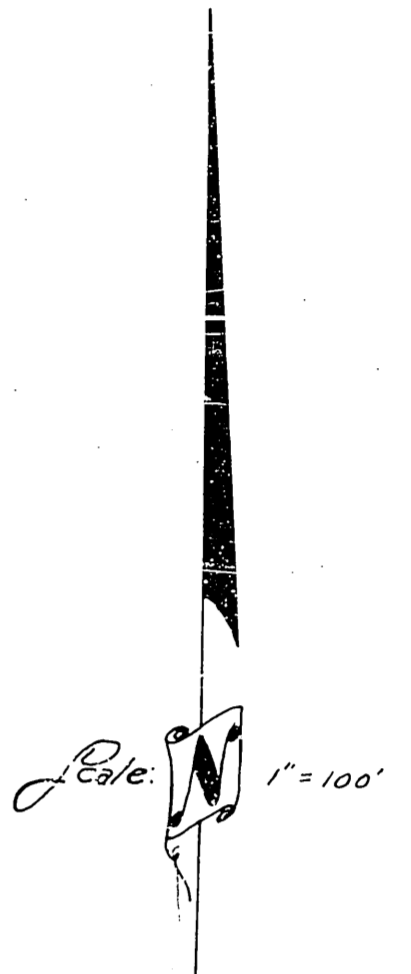
Parcel #1 of Deed rec. June 30, 1945,  
Doc. # 5517, (D.R. D2960-578)

N 89° 58' 55" W 1201.410'

3

LOT

FILED WITH LOS ANGELES  
COUNTY RECORDER, RAY E. LEE  
OCT 1 1968



COUNTY ENGINEER'S COPY

