

June 14, 1989

Bk 5, pgs 38-40 of  
OFFICIAL MAPS of L.A. County

SCALE: 1"=40'

# OFFICIAL MAP NO. 2

SHEET 1 OF 3

IN THE CITY OF LOS ANGELES

STATE OF CALIFORNIA

JUN 14 1989

**COPY** of Document Recorded  
89- 958537

Has not been compared with original.  
Original will be returned when  
processing has been completed.  
LOS ANGELES COUNTY REGISTRAR - RECORDER

BEING A SURVEY OF LOTS 1 THRU 7 AND PORTIONS OF LOTS 8 AND 9 OF BLOCK 8, GREENWELL TRACT, PER MAP RECORDED IN BOOK 17 PAGE 70 OF MISCELLANEOUS RECORDS AND LOTS 1 THRU 24, 26 AND PORTIONS OF LOTS 28, 30 AND 32 OF BLOCK 1, LOTS 1, 2, 5, 7, 9, 11, 13, 15, 17, 19 AND PORTIONS OF LOTS 3, 4, 6, 8, 10, 12, 14, 16, 18 AND 20 OF BLOCK 2, WRIGHT'S SUBDIVISION OF THE SISTERS OF CHARITY TRACT, PER MAP RECORDED IN BOOK 5, PAGE 431 OF MISCELLANEOUS RECORDS AND LOTS 1 THRU 17, 19 AND 21 THRU 28 OF CARLETON AND SUMMERFIELD'S SUBDIVISION OF THE DUNIGAN TRACT, PER MAP RECORDED IN BOOK 10, PAGE 95 OF MISCELLANEOUS RECORDS AND LOTS 1 AND 2, TRACT NO. 6896, PER MAP RECORDED IN BOOK 72, PAGE 70 OF MAPS AND LOTS 4 THRU 9 OF BLOCK 1, LOTS 10, 12, 14, 16, 18, 20 AND PORTIONS OF LOTS 9, 11, 13, 15, 17 AND 19 OF BLOCK 2, LOTS 1, 2, 3 AND PORTIONS OF LOTS 4 THRU 10 OF BLOCK 3, HARVEY TRACT, PER MAP RECORDED IN BOOK 10, PAGE 77 OF MISCELLANEOUS RECORDS AND LOTS 1 THRU 4 AND A PORTION OF LOT 5, KINGSBAKER'S SUBDIVISION OF LOTS 1 THRU 8 IN BLOCK 2, HARVEY TRACT, PER MAP RECORDED IN BOOK 37, PAGE 48 OF MISCELLANEOUS RECORDS AND LOTS 1 AND 2, BARUCH AND LOEW SUBDIVISION OF LOTS 1, 2 AND 3 OF BLOCK 1, DOWNEY HARVEY TRACT, PER MAP RECORDED IN BOOK 36, PAGE 49 OF MISCELLANEOUS RECORDS AND PROPERTY OF MRS. MARY MITCHELL, PER MAP RECORDED IN BOOK 4, PAGE 60 OF MAPS AND LOT A, TURN-VEREIN GERMANIA TRACT, PER MAP RECORDED IN BOOK 18, PAGE 49 OF MAPS AND A PORTION OF LOT 1, BLOCK 8, HANCOCK'S SURVEY, PER MAP RECORDED IN BOOK 2, PAGES 108 THRU 111 OF MISCELLANEOUS RECORDS AND LOTS 1, 4, 5, 6, 7 AND PORTIONS OF LOTS 2 AND 3, DENNIS AND STEWART'S ADDITION, PER MAP RECORDED IN BOOK 6, PAGE 440 OF MISCELLANEOUS RECORDS AND LOTS 1 AND 2, MCNEIL'S FIGUEROA STREET TRACT, PER MAP RECORDED IN BOOK 12, PAGE 93 OF MAPS, AND PORTIONS OF FIFTEENTH STREET, GEORGIA STREET, DE LONG STREET, WRIGHT STREET AND CERTAIN ALLEY'S VACATED BY RESOLUTION OF THE LOS ANGELES CITY COUNCIL, RECORDED AS DOCUMENT NO. 89-884247 OF OFFICIAL RECORDS, ALL RECORDS OF LOS ANGELES COUNTY.

### RESOLUTION OF THE CITY COUNCIL

WHEREAS THE CITY COUNCIL OF THE CITY OF LOS ANGELES INSTITUTED VACATION PROCEEDINGS FOR VARIOUS STREETS AND ALLEYS UNDER THE COUNCIL FILE NO. 82-1881-S3 TO FACILITATE THE DEVELOPMENT OF THE LOS ANGELES CONVENTION AND EXHIBITION CENTER AND IN CONNECTION THEREWITH DIRECTED THE CITY ENGINEER TO PREPARE A MAP TO CONSOLIDATE A PORTION OF THE INVOLVED PROPERTY AND THE VACATED STREETS AND ALLEYS.

NOW THEREFORE THE CITY COUNCIL HEREBY CERTIFIES AND RESOLVES AS FOLLOWS:

SECTION 1 THE ATTACHED MAP CONSISTING OF 3 SHEETS IS APPROVED AND ADOPTED AS OFFICIAL MAP NO. 2 OF THE CITY OF LOS ANGELES IN ACCORDANCE WITH THE PROVISIONS OF SECTIONS 66499.50 THROUGH 66499.58 OF THE STATE GOVERNMENT CODE FOR THE USES AND PURPOSES THEREIN NAMED.

SECTION 2 THE COMMUNITY REDEVELOPMENT AGENCY OF THE CITY OF LOS ANGELES IS THE OWNER OF, OR HAS ORDERS OF IMMEDIATE POSSESSION, FOR ALL OF THE PROPERTY SHOWN AS PARCELS 1 AND 2 ON SAID MAP AND CONSENTS TO ITS PROPERTY BEING SHOWN ON SAID MAP.

SECTION 3 THE OMISSION FROM THIS MAP OF AN EXISTING EASEMENT, FUTURE STREET, RIGHT OF WAY, OR RIGHT, IS NOT INTENDED TO CONSTITUTE AN ABANDONMENT OF SUCH EASEMENT, FUTURE STREET, RIGHT OF WAY, OR RIGHT.

SECTION 4 THE CITY CLERK IS DIRECTED TO CERTIFY THE ADOPTION OF THIS RESOLUTION AND MAP AND TO CAUSE THE MAP TO BE RECORDED IN THE OFFICE OF THE COUNTY RECORDER OF LOS ANGELES COUNTY.  
APPROVED AND ADOPTED THIS 7 DAY OF June 1989.

### CITY ENGINEER'S STATEMENT

I, ROBERT S. HORII, CITY ENGINEER OF THE CITY OF LOS ANGELES STATE THAT THIS MAP CONSISTING OF THREE SHEETS WAS COMPLETED UNDER MY DIRECTION IN MAY 1989 IN ACCORDANCE WITH THE PROVISIONS OF SECTIONS 66499.50 THROUGH 66499.58 OF THE STATE GOVERNMENT CODE AND UNDER THE DIRECTION AND WITH THE APPROVAL OF THE CITY COUNCIL OF THE CITY OF LOS ANGELES.

*Robert S. Horii*  
ROBERT S. HORII

CITY ENGINEER



### BASIS OF BEARINGS

THE BEARING N 61°33'15"W SHOWN ALONG PICO BLVD. BETWEEN LOS ANGELES CITY CENTER LINE MONUMENTS AS SHOWN IN LOS ANGELES CITY ENGINEER'S FIELD BOOK 126-205 PAGES 129 TO 133, WHOSE PLANE RECTANGULAR COORDINATES ARE BASED ON THE LAMBERT CONFORMAL PROJECTION, CALIFORNIA ZONE 7, WAS TAKEN AS THE BASIS OF BEARINGS SHOWN ON THIS MAP.

I HEREBY CERTIFY THAT THE CITY COUNCIL OF THE CITY OF LOS ANGELES APPROVED AND ADOPTED THIS MAP AND THE AFFIXED RESOLUTION BY A MAJORITY OF ITS MEMBERS INCLUDING THE PRESIDENT OF THE COUNCIL.

DATE 9 1989  
ELIAS MARTINEZ, CITY CLERK  
BY \_\_\_\_\_ DEPUTY

*John Ferraro*  
PRESIDENT CITY COUNCIL JOHN FERRARO

*Richard Alatorre*  
COUNCILMEMBER RICHARD ALATORRE

*Michael Woo*  
COUNCILMEMBER MICHAEL WOO

*Marvin Braude*  
COUNCILMEMBER MARVIN BRAUDE

*Ernani Bernardi*  
COUNCILMEMBER ERNANI BERNARDI

*Hal Bernson*  
COUNCILMEMBER HAL BERNSON

*Joy Picus*  
COUNCILMEMBER JOY PICUS

*Joel Wachs*  
COUNCILMEMBER JOEL WACHS

*Nate Holden*  
COUNCILMEMBER NATE HOLDEN

*Gloria Molina*  
COUNCILMEMBER GLORIA MOLINA

*Gilbert W. Lindsay*  
COUNCILMEMBER GILBERT W. LINDSAY

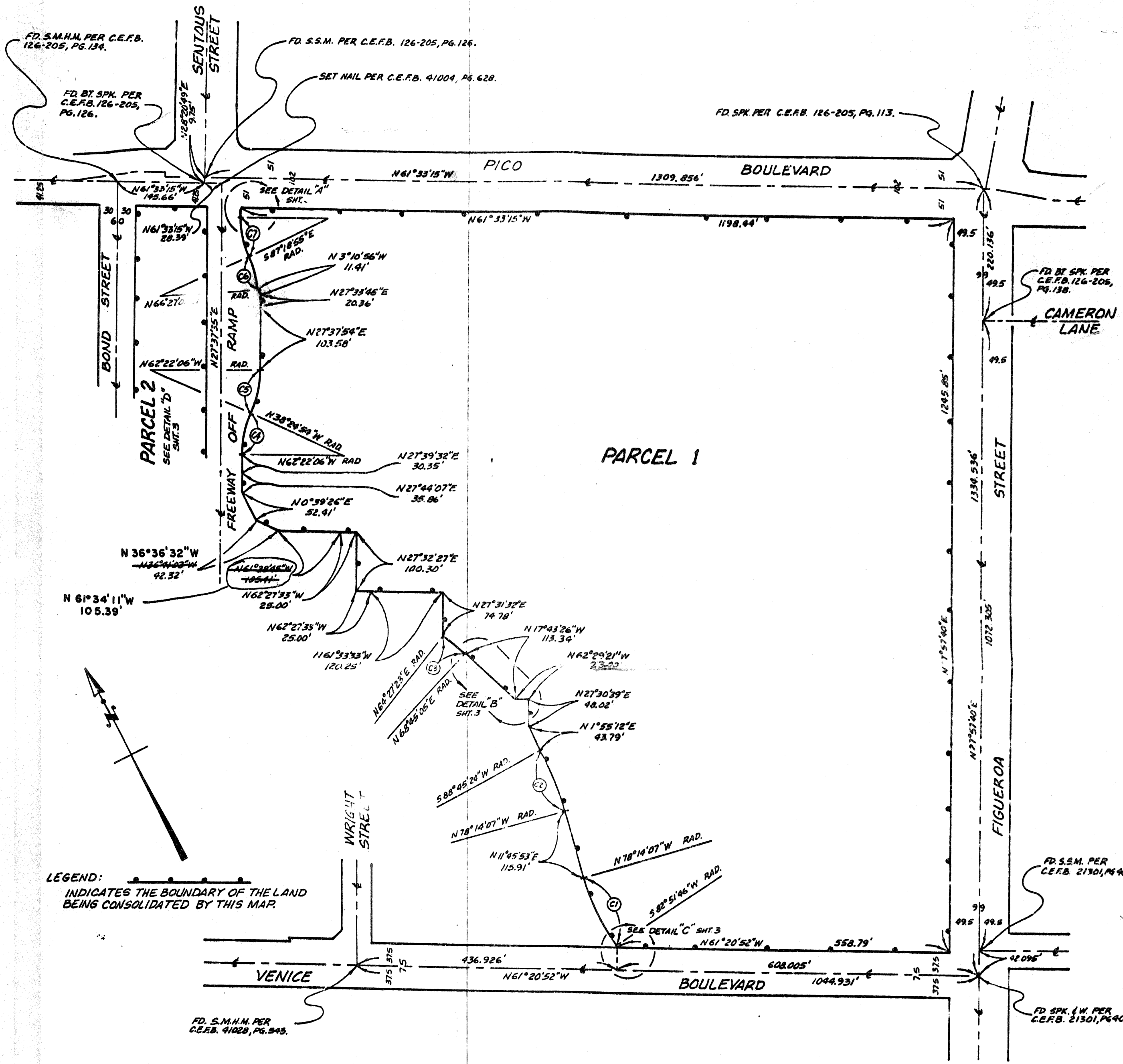
*Zev Yaroslavsky*  
COUNCILMEMBER ZEV YAROSLAVSKY

*Robert Farrell*  
COUNCILMEMBER ROBERT FARRELL

*Ruth Galanter*  
COUNCILMEMBER RUTH GALANTER

# OFFICIAL MAP NO. 2

IN THE CITY OF LOS ANGELES  
STATE OF CALIFORNIA



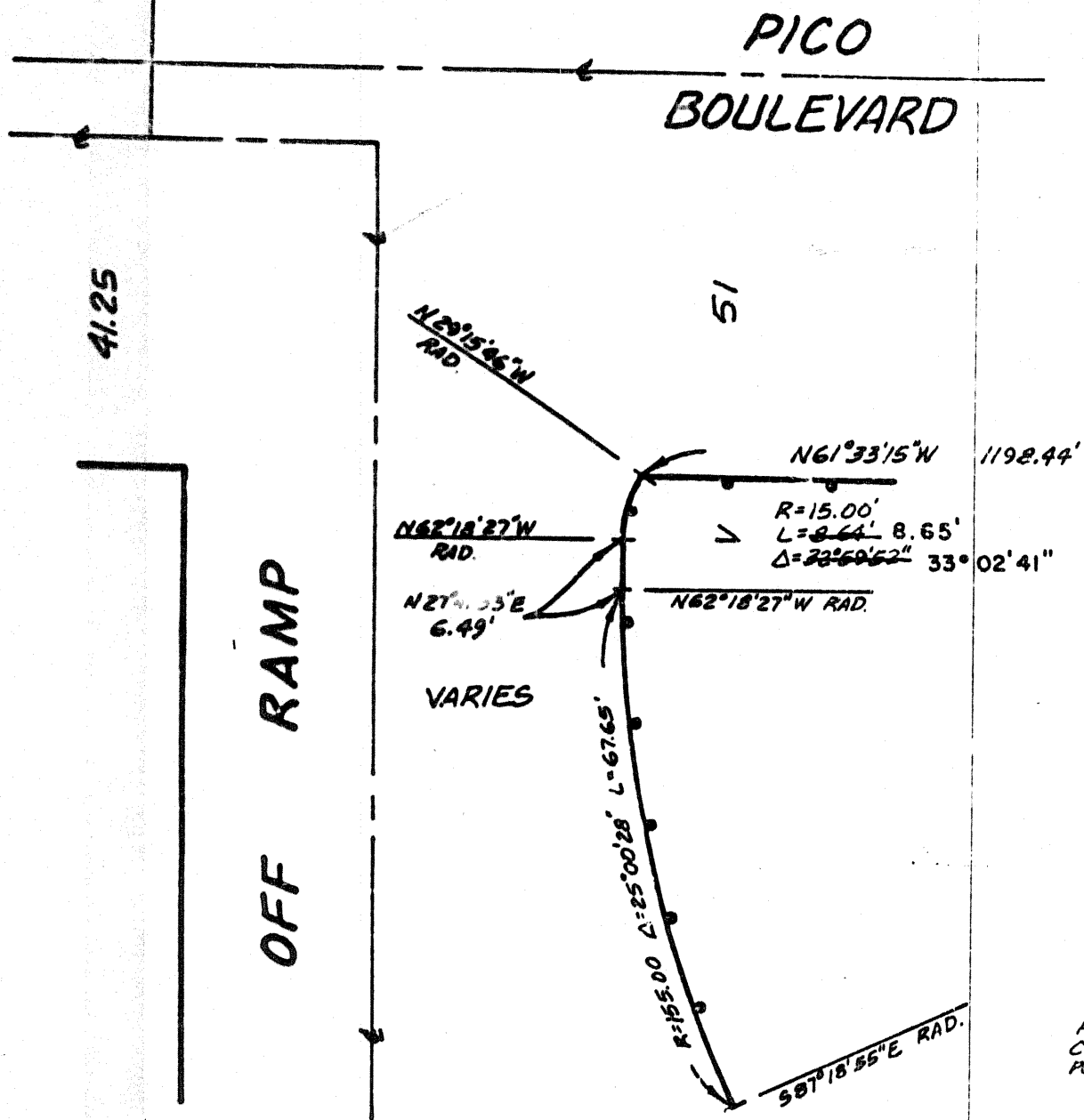
LEGEND:  
INDICATES THE BOUNDARY OF THE LAND  
BEING CONSOLIDATED BY THIS MAP.

Curve Table			
#	DELTA	LENGTH	RADIUS
C1	18° 54' 07"	131.96'	400.00'
C2	13° 00' 29"	110.56'	487.00'
C3	4° 17' 42"	47.55'	634.33'
C4	23° 57' 12"	68.89'	164.78'
C5	23° 57' 12"	77.23'	184.75'
C6	20° 51' 54"	58.23'	159.96'
C7	25° 00' 28"	67.65'	155.00'

# OFFICIAL MAP NO. 2

IN THE CITY OF LOS ANGELES  
STATE OF CALIFORNIA

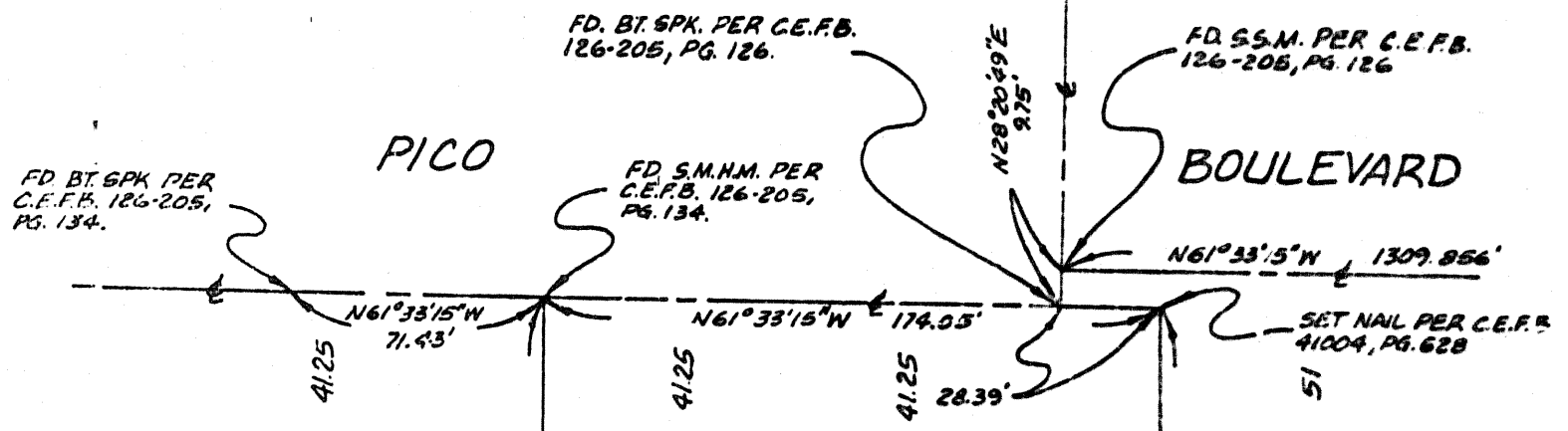
**DETAIL "A"**  
SCALE: NONE



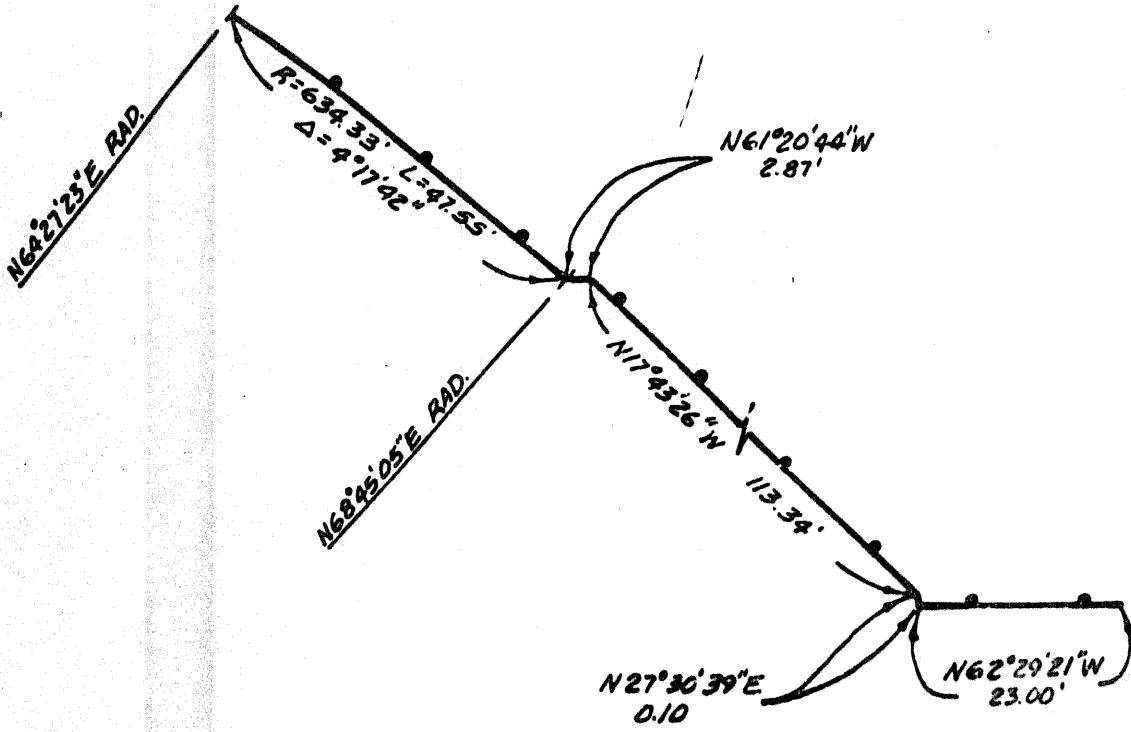
TYPICAL ALL DETAILS

**DETAIL "D"**  
SCALE: 1" = 50'

LEGEND:  
INDICATES THE BOUNDARY OF THE LAND  
BEING CONSOLIDATED BY THIS MAP.



**DETAIL "B"**  
SCALE: NONE



**DETAIL "C"**  
SCALE: NONE

