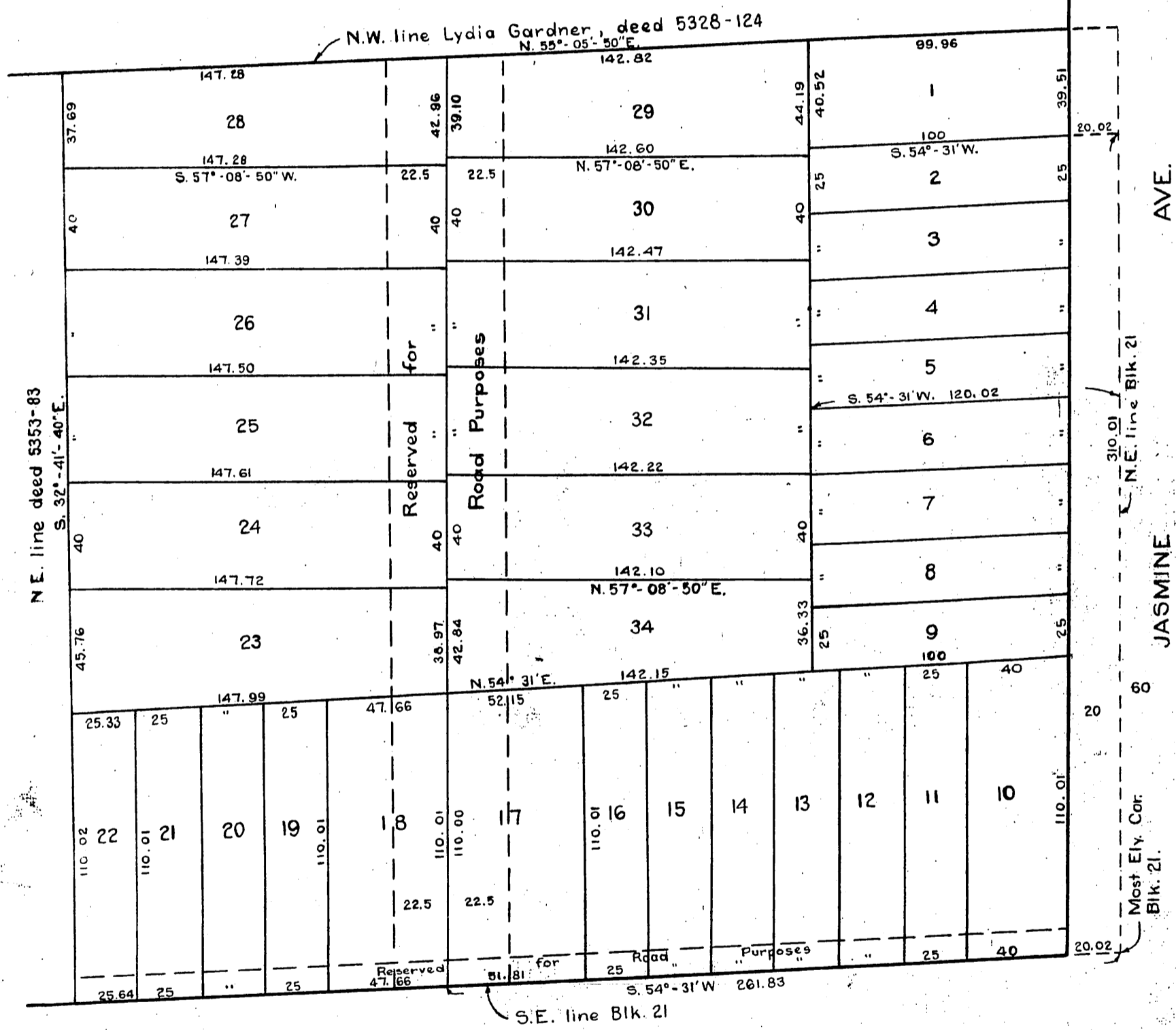
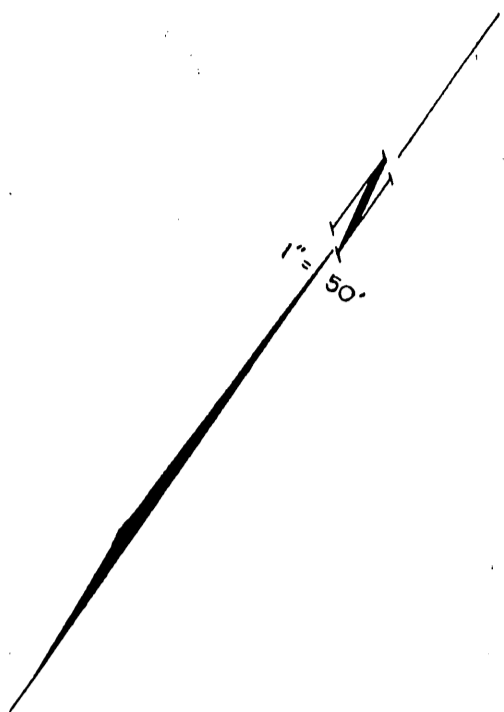


WILL A. DUNN et al  
TO  
CITY OF LOS ANGELES

ORM-114-106

8



WASHINGTON ST.

PLAT  
of a portion of  
BLOCK 21  
THE PALMS  
(M.R. 21-43 et seq)

COMP. W.P.M.  
L.C.

See M.B. 41-77  
D: 40-26  
Sht. 22