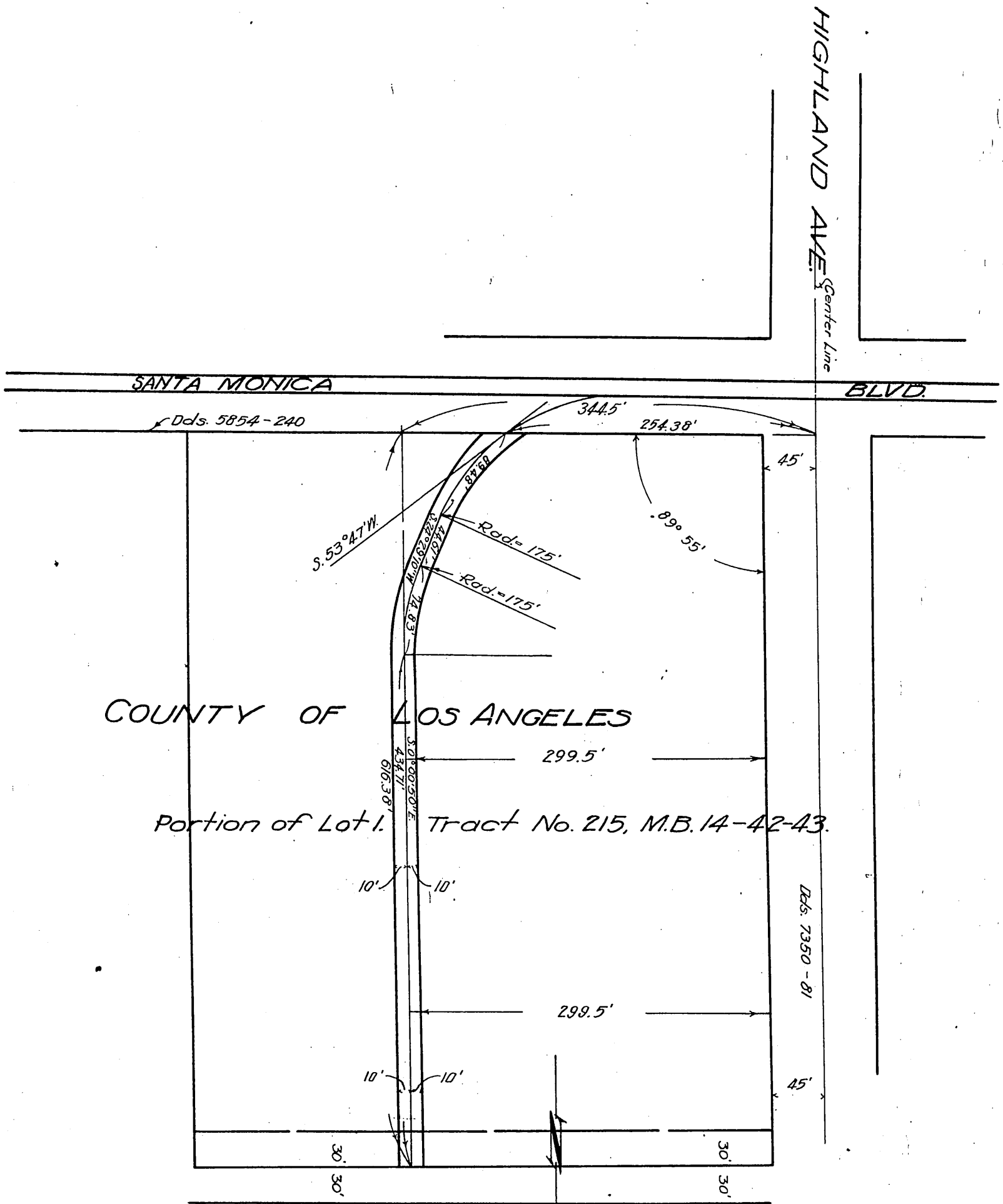


G. ALLAN HANCOCK  
 C.E. TOBERMAN  
 JOSEPHINE W. TOBERMAN } TO PACIFIC ELECTRIC RAILWAY Co.



COUNTY OF LOS ANGELES

Portion of Lot 1, Tract No. 215, M.B. 14-42-43.

1" = 100'

C.E.K. 605-b.

A.311.

Sht. 22

© P. H. & F. W. H.