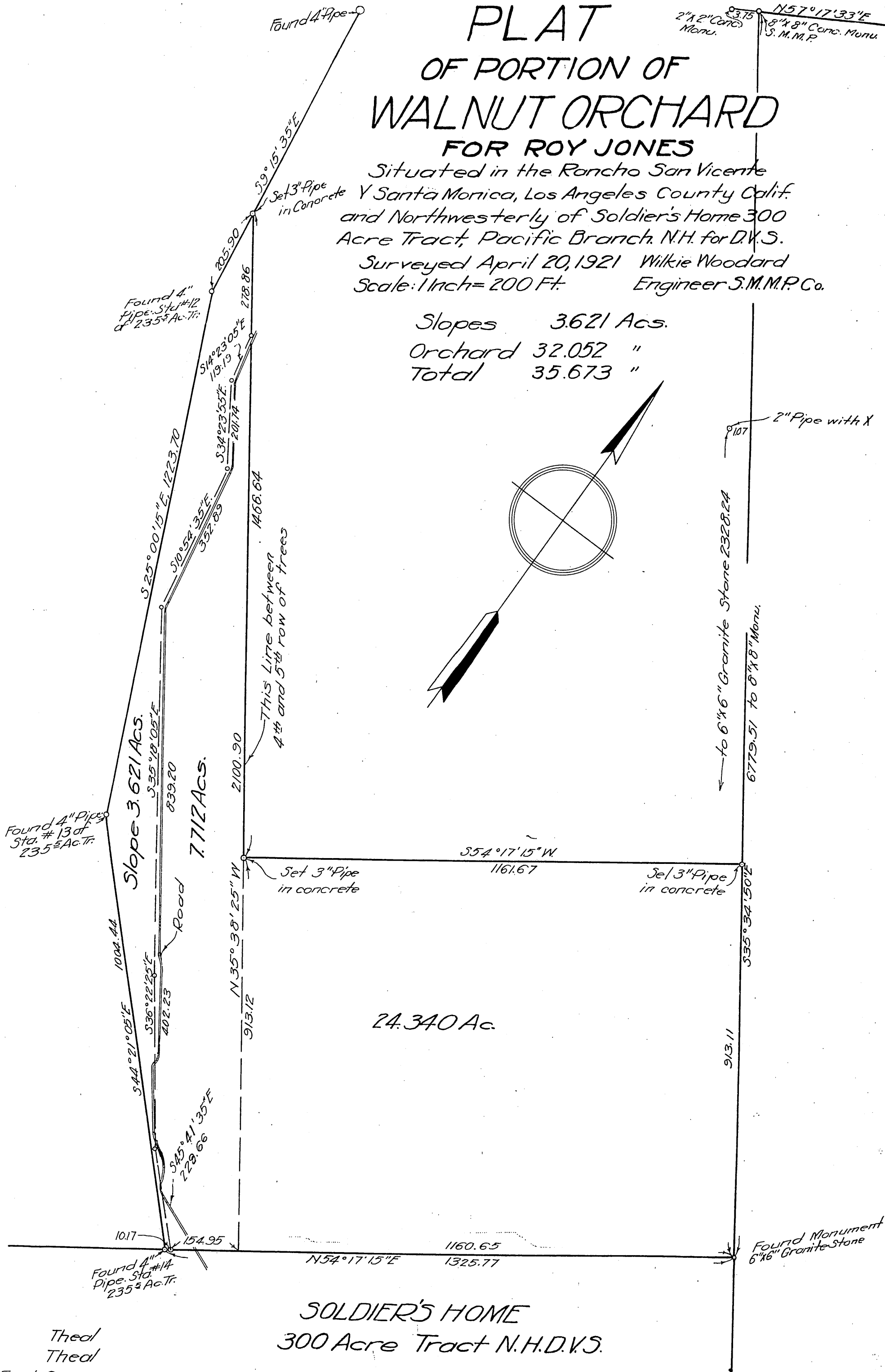


40 ROY JONES & PAULINE W JONES
TO
THE NATIONAL HOME FOR DISABLED VOLUNTEER
SOLDIERS

PLAT OF PORTION OF WALNUT ORCHARD

FOR ROY JONES
Situating in the Rancho San Vicente
Y Santa Monica, Los Angeles County Calif.
and Northwesterly of Soldier's Home 300
Acre Tract, Pacific Branch, N.H. for D.V.S.
Surveyed April 20, 1921 Wilkie Woodard
Scale: 1 Inch = 200 Ft. Engineer S.M.M.P. Co.

Slopes 3.621 Acs.
Orchard 32.052 "
Total 35.673 "



Theal
Theal
Envl. Spears
Theal

C3, 47, 51, 54, 55, C2, -35, C.B. 3-205, 61, 57, 92, W.W. File 229-a-b-c. +

Rec. Aug. 18, 1921

Sht. 21

Comp. H.G. F.W.N.