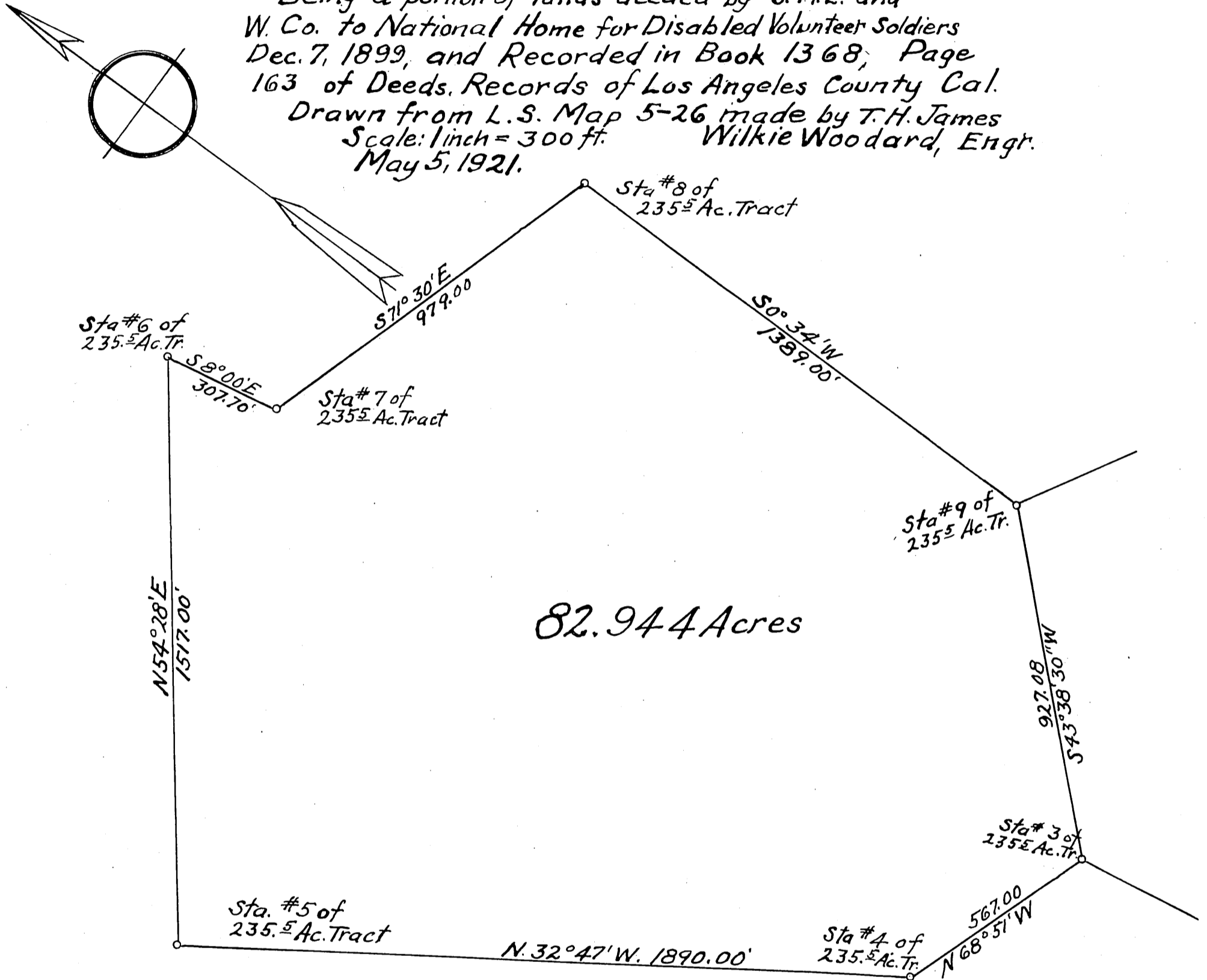


MAP OF PROPERTY TO BE CONVEYED BY NATIONAL HOME FOR DISABLED VOLUNTEER SOLDIERS TO GEORGE C. THOMAS, JR.

Being a portion of lands deeded by S. M. L. and
W. Co. to National Home for Disabled Volunteer Soldiers
Dec. 7, 1899, and Recorded in Book 1368, Page
163 of Deeds, Records of Los Angeles County Cal.
Drawn from L. S. Map 5-26 made by T. H. James
Scale: 1 inch = 300 ft. Wilkie Woodard, Engr.
May 5, 1921.



Recorded August 18, 1921.