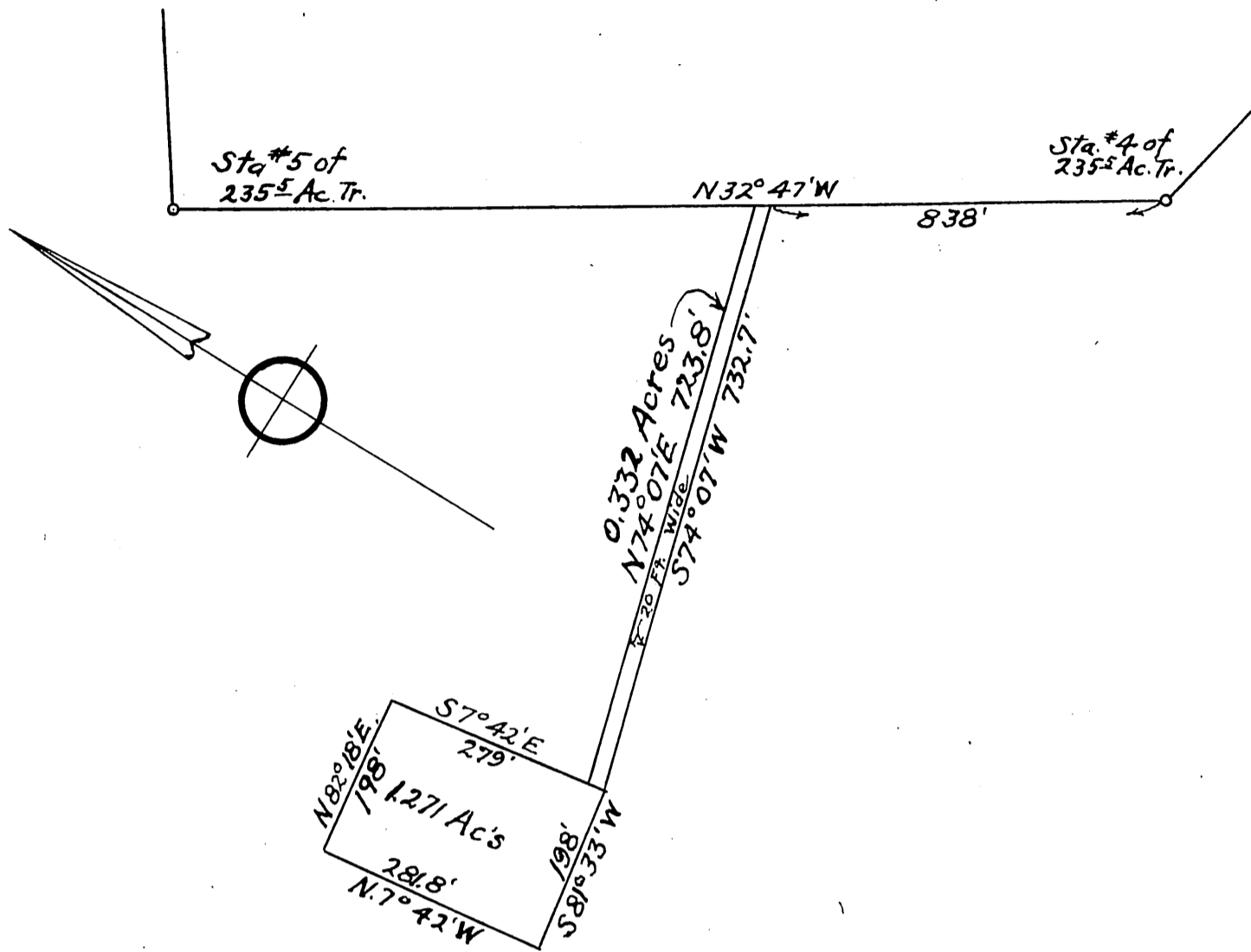


47

The National Home for Disabled Volunteer Soldiers
To
Santa Monica Mountain Park Company



SKETCH

Of Property to be conveyed by National Home
for Disabled Volunteer Soldiers to S. M. M. P.
Company. Being a portion of Lands deeded by S. M. L.
and W. Co. to National Home for Disabled Volunteer Soldiers
Dec. 7, 1899, and Recorded in Book 1368, Page 163,
of Deeds, Records of Los Angeles County, Calif.
Drawn from L. S. 5-26 made by T. H. James
Scale: 1 inch = 200 Ft. Wilkie Woodard
Engineer
May 5, 1921

Exhibit "A"

Recorded August 18, 1921.