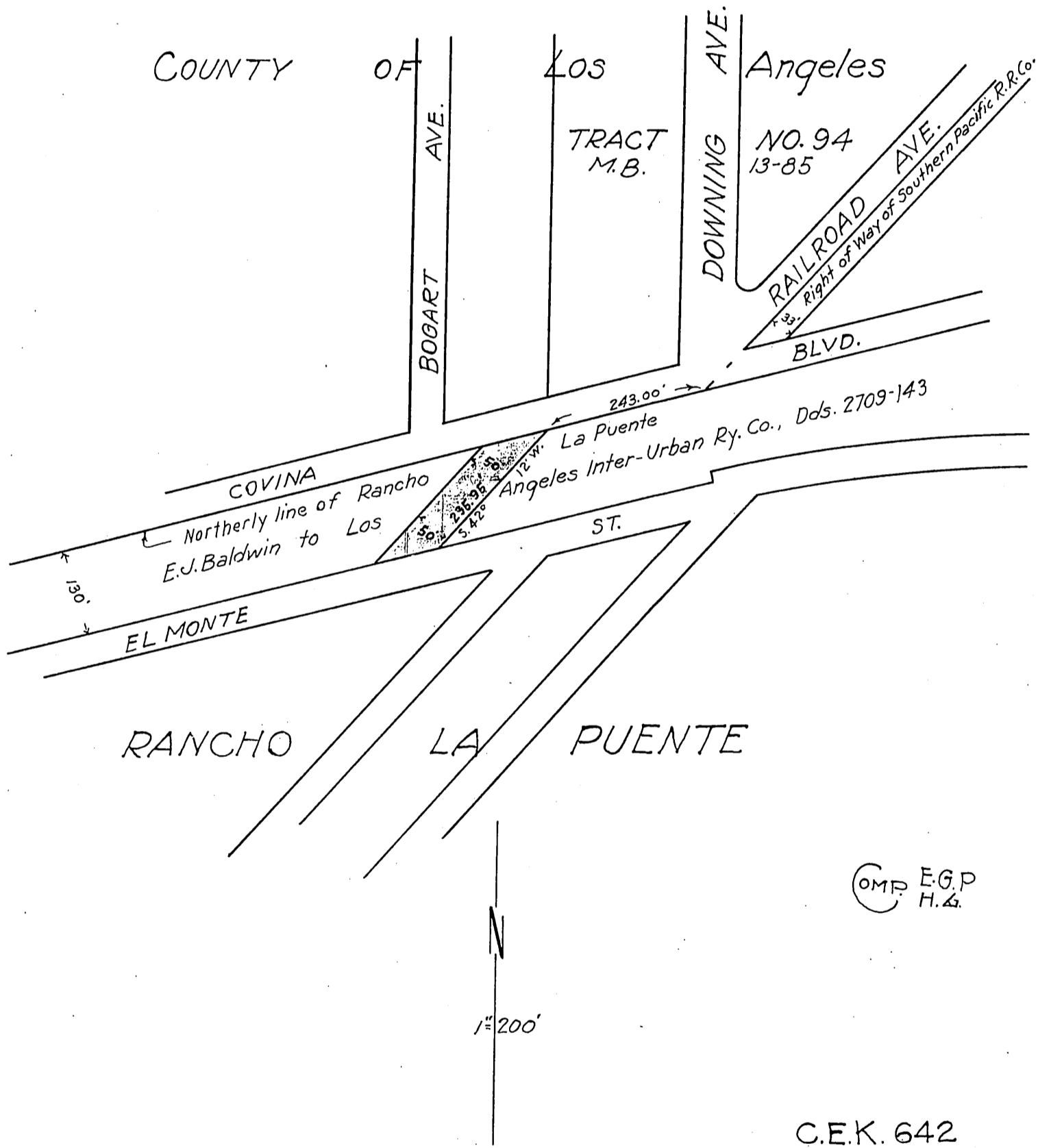


PACIFIC ELECTRIC RAILWAY CO.
TO THE
COUNTY OF LOS ANGELES



Vac. per. Covina Blvd. D:46-53 O.R. 6500-292
 Covina Blvd. & El Monte St. changed to San Bernardino Rd. D:49-218
 San Bernardino Rd. " " E. Ramona Blvd. D:49-222