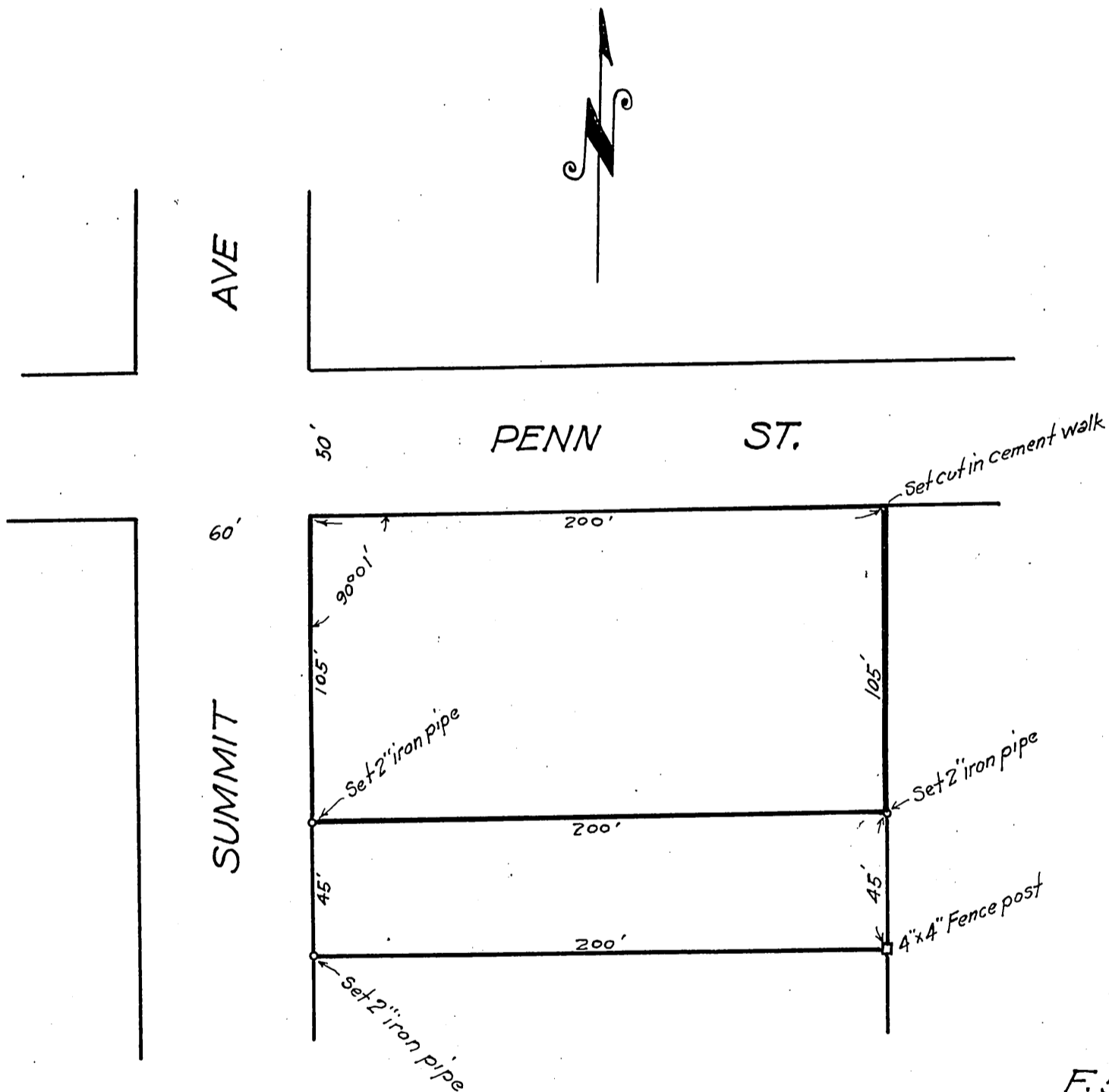


73  
Lilly Busch, August A. Busch,  
Charles Nagel and Alice Busch  
TO  
Pasadena City School District  
of Los Angeles County, California.

The North 105 ft. of the North 150 ft. of the West 200 ft.  
of Lot 6 in Block C of the Replat of Tebbets' Subdivision  
of the South 53 Acres of Block K of the Subdivided Lands  
of J.H. Painter and B.F. Ball in the City of Pasadena  
County of Los Angeles, State of California  
(M.R. 42-9)

Scale: -1 in. = 50 ft. - W<sup>o</sup> Chalmers, Surveyor. - August - 1920



F. 519

OMP E.G.P.  
L.C.T.