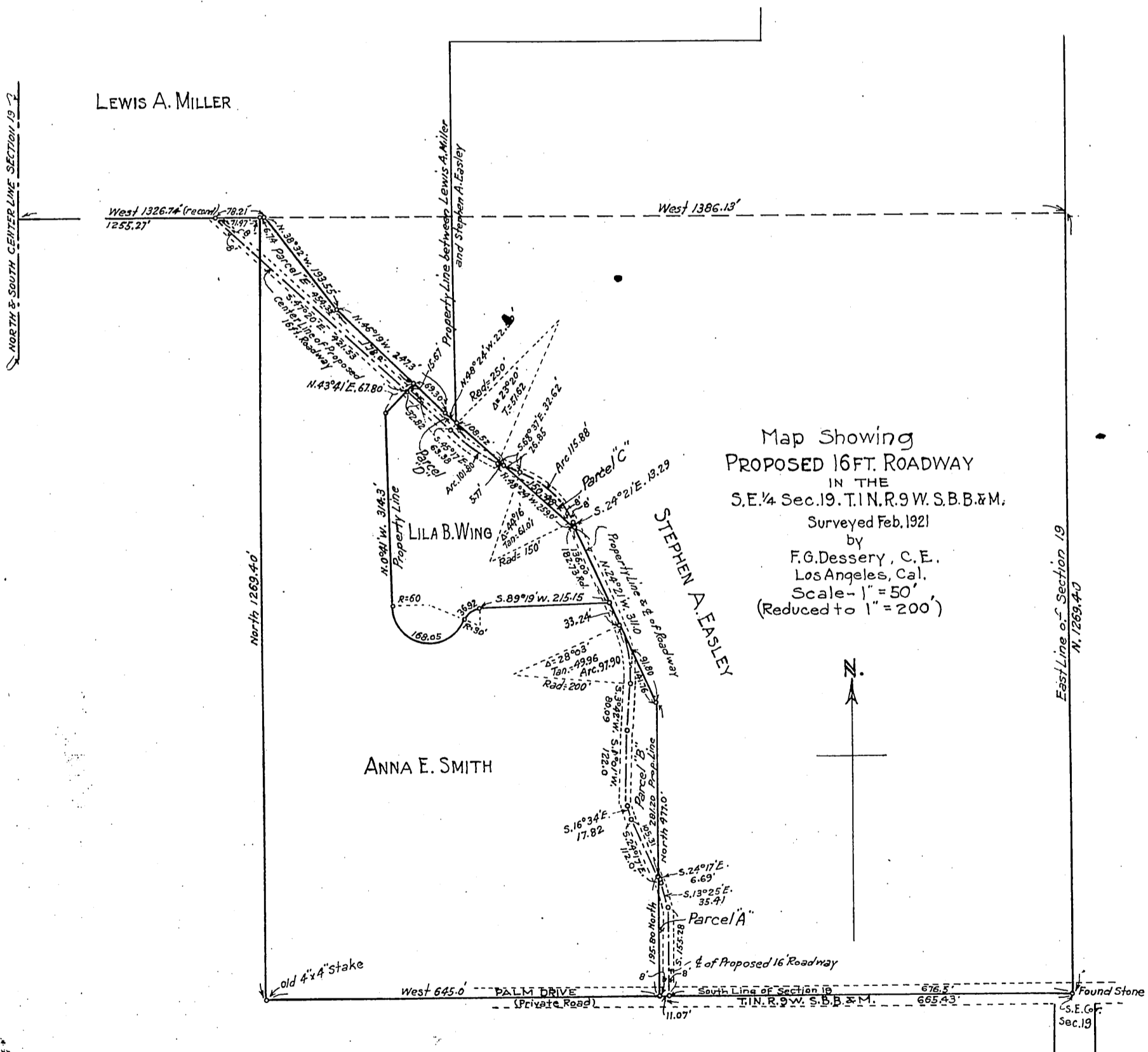


George H. Anderson, Lila B. Wing, Stephen Easley,  
 Edna Elizabeth Easley, and Anna E. Smith  
 To  
 Lewis A. Miller and Cotta S. Miller



Map Showing  
 PROPOSED 16 FT. ROADWAY  
 IN THE  
 S.E. 1/4 Sec. 19, T.1N., R.9W., S.B.B. & M.  
 Surveyed Feb. 1921  
 by  
 F.G. Dessery, C.E.,  
 Los Angeles, Cal.  
 Scale - 1" = 50'  
 (Reduced to 1" = 200')

3.167

E.G.P.  
H.A.

Recorders Note -  
 Scale reduced to 1" = 200'  
 County Surveyor

Sh. 45

3.167

F.B. T-183-June-1921

Rec. Dec. 29, 1921

O.R. 765